

GENERAL INFORMATION

The fuel tank is located under the floor below the rear seats.

- The fuel tank is made of material containing no lead.
- A plastic under protector, which features light weight and resists corrosion, has been used.
- The valve assembly contains a cut-off valve, which prevents fuel to flow out, and a two-way valve, which regulates the fuel pressure inside the fuel tank.

- The fuel pump module contains a fuel pump, fuel filter and fuel pressure regulator (6G7-GDI) <6G7>.
- The high-pressure fuel hose is of an one-touch joint type, which is made of nylon tube. This will improve serviceability <6G7>.

FUEL TANK <6G7>

REMOVAL AND INSTALLATION

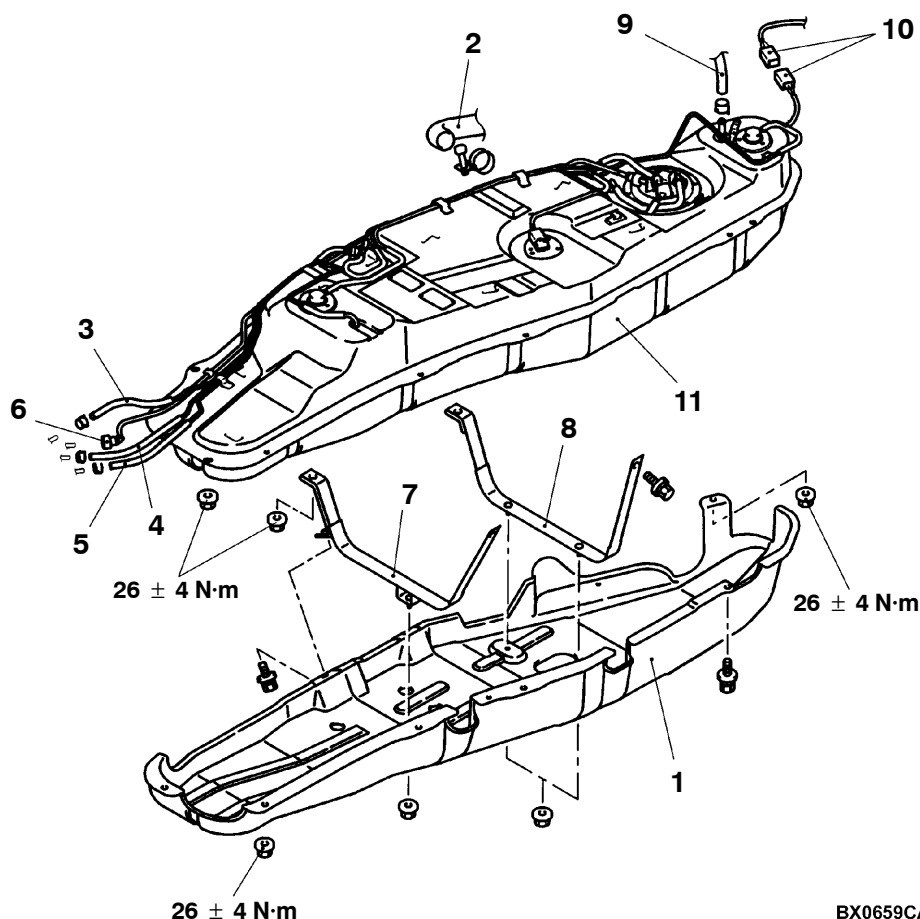
Pre-removal Operation

- Draining Fuel
- Fuel Line Pressure Reduction
(Refer to GROUP 13A – On-vehicle Service)
- Transmission Mount Center Member Assembly
(Refer to GROUP 32)

Post-installation Operation

- Transmission Mount Center Member Assembly
(Refer to GROUP 32)
- Fuel Leakage Inspection
- Refilling Fuel

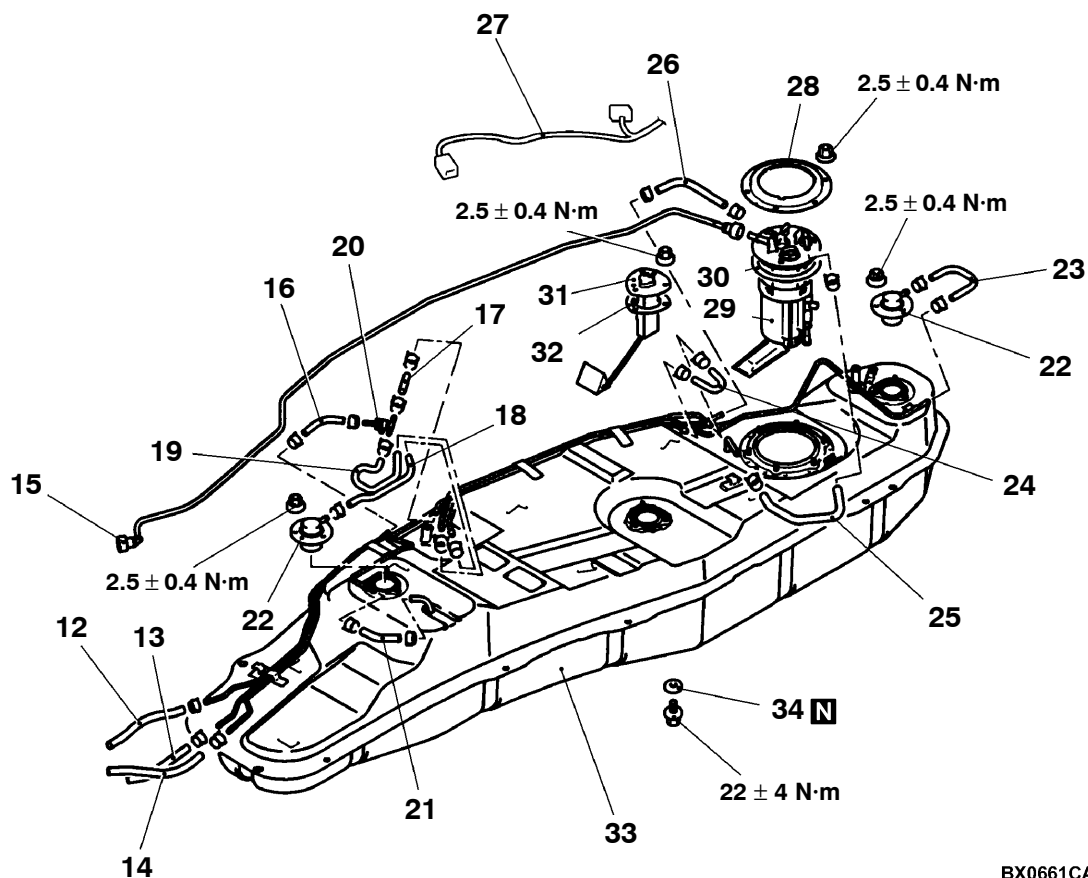
<VEHICLES WITH CANISTER>



BX0659CA

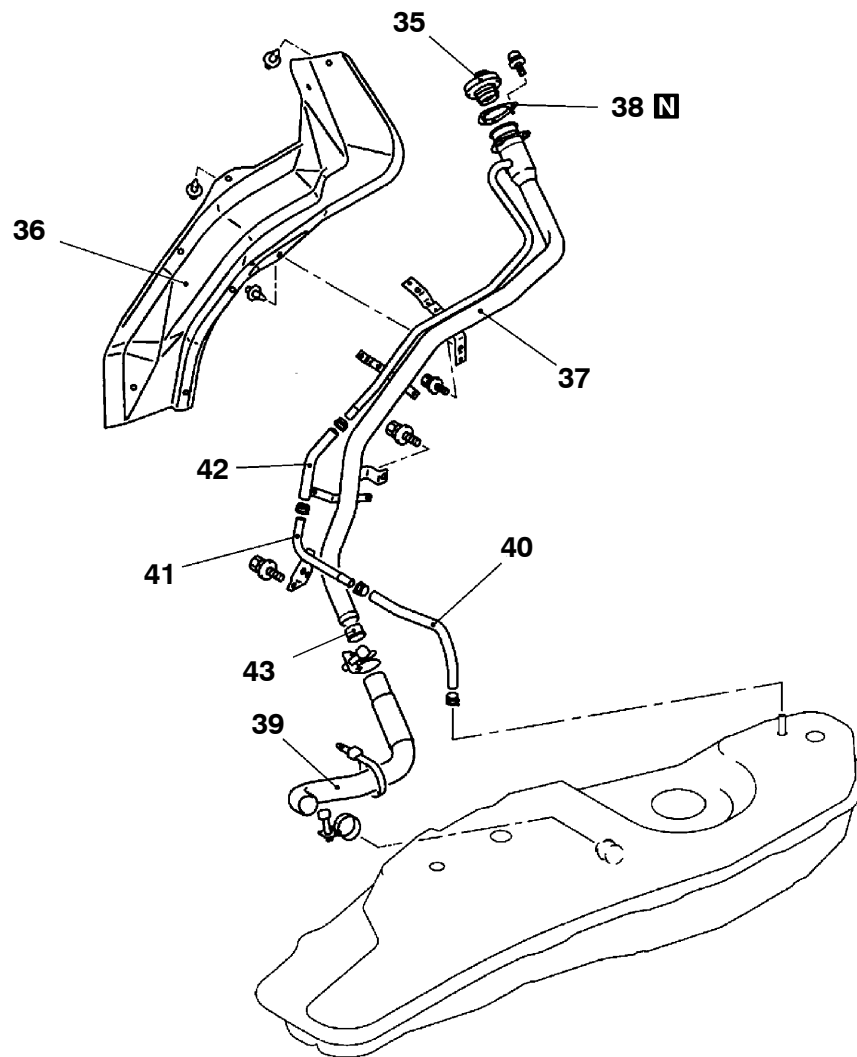
Removal steps

- | | | |
|---|-----|--|
| 1. Fuel tank under protector | | 7. Fuel tank band front |
| 2. Fuel filler hose connection | | 8. Fuel tank band rear |
| 3. Fuel return hose connection | ◀A▶ | 9. Fuel tank breather hose connection |
| 4. Fuel vapor hose connection | ◀A▶ | 10. Fuel tank harness connector connection |
| 5. Fuel return hose connection | | 11. Fuel tank assembly |
| ▶A◀ 6. Fuel high-pressure hose connection | | |



BX0661CA

- | | |
|-----------------------------|-------------------------------|
| 12. Fuel return hose | 24. Fuel tank vapor hose |
| 13. Fuel vapor hose | 25. Fuel tank suction hose |
| 14. Fuel return hose | 26. Fuel tank return hose |
| 15. Fuel high-pressure hose | 27. Fuel tank harness |
| 16. Fuel tank vapor hose | 28. Tapping plate |
| 17. Fuel tank vapor hose | 29. Fuel pump module assembly |
| 18. Fuel tank vapor hose | 30. Packing |
| 19. Fuel tank vapor hose | 31. Fuel gauge unit |
| 20. Fuel check valve | 32. Packing |
| 21. Fuel tank hose | 33. Fuel tank |
| 22. Valve assembly | 34. Gasket |
| 23. Fuel tank vapor hose | |

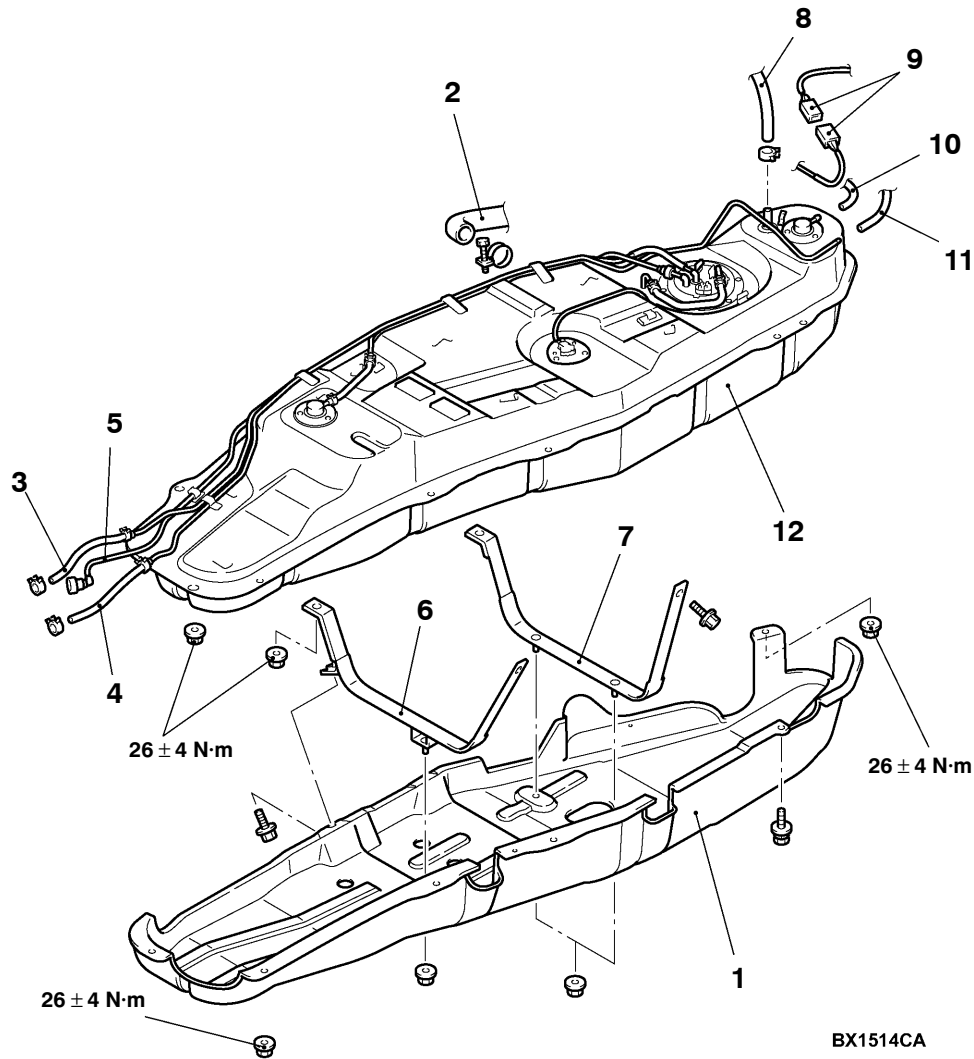


AX0660CA

- 35. Fuel cap
- 36. Fuel filler neck protector
- 37. Fuel filler neck
- 38. Fuel filler neck gasket
- 39. Fuel filler hose

- 40. Fuel filler neck breather hose
- 41. Fuel filler pipe assembly
- 42. Fuel filler neck breather hose
- 43. Shut-off valve

<VEHICLES WITHOUT CANISTER>

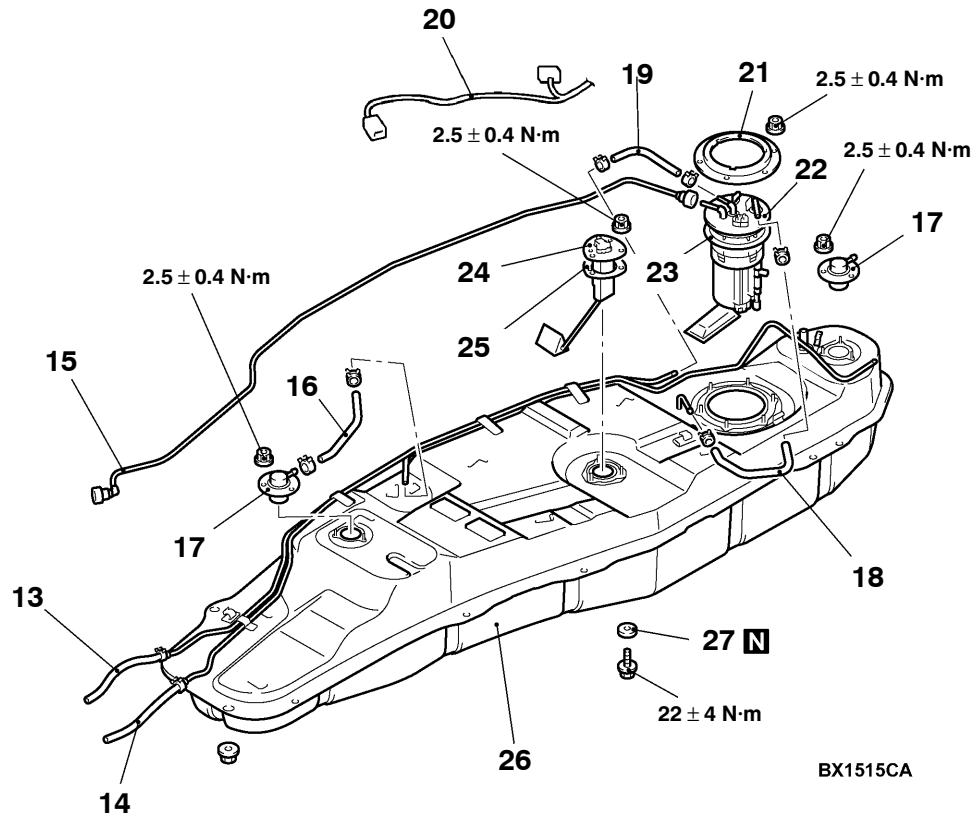
**Removal steps**

►A◄

1. Fuel tank under protector
2. Fuel filler hose connection
3. Fuel return hose connection
4. Fuel vapor hose connection
5. Fuel high-pressure hose connection
6. Fuel tank band front
7. Fuel tank band rear



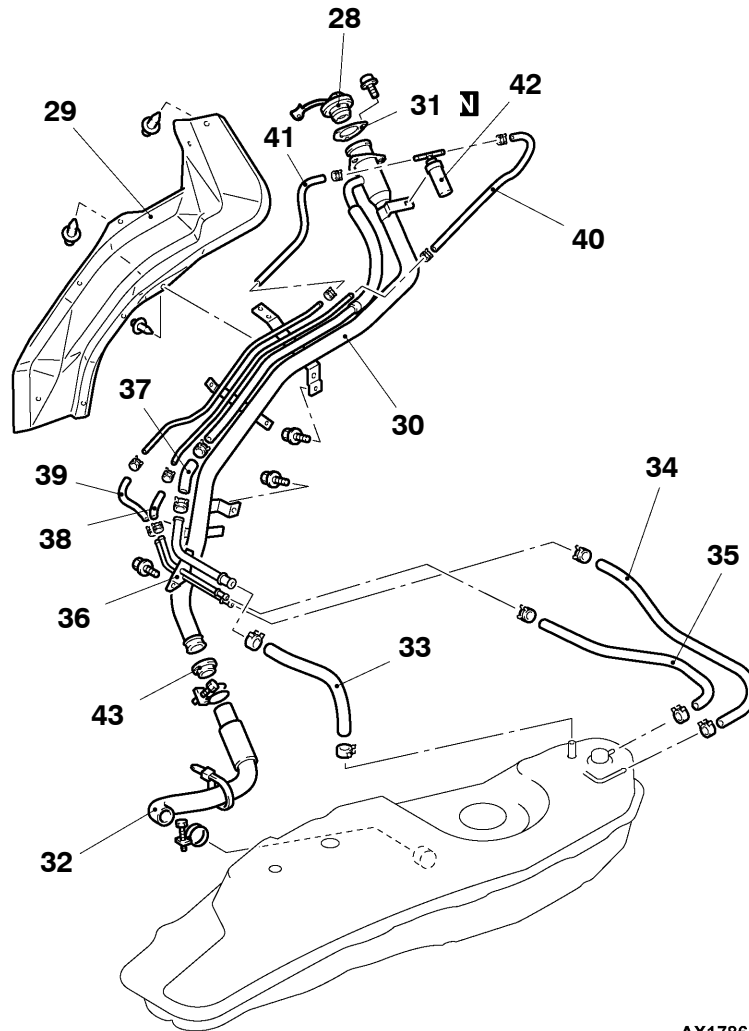
8. Fuel tank breather hose connection
9. Fuel tank harness connector connection
10. Fuel filler neck vapor hose (A) connection
11. Fuel filler neck vapor hose (B) connection
12. Fuel tank assembly



BX1515CA

- 13. Fuel return hose
- 14. Fuel vapor hose
- 15. Fuel high-pressure hose
- 16. Fuel tank vapor hose
- 17. Valve assembly
- 18. Fuel tank suction hose
- 19. Fuel tank return hose
- 20. Fuel tank harness

- 21. Tapping plate
- 22. Fuel pump module assembly
- 23. Packing
- 24. Fuel gauge unit
- 25. Packing
- 26. Fuel tank
- 27. Gasket



AX1786CA

- | | |
|-------------------------------------|---|
| 28. Fuel cap | 37. Fuel filler neck breather hose |
| 29. Fuel filler neck protector | 38. Fuel filler neck vapor hose |
| 30. Fuel filler neck | 39. Fuel filler neck vapor hose |
| 31. Fuel filler neck gasket | 40. Fuel filler neck vapor (B) hose |
| 32. Fuel filler hose | 41. Fuel filler neck vapor (A) hose |
| 33. Fuel filler neck breather hose | 42. Fuel filler neck check valve assembly |
| 34. Fuel filler neck vapor (B) hose | 43. Shut-off valve |
| 35. Fuel filler neck vapor (A) hose | |
| 36. Fuel filler pipe assembly | |

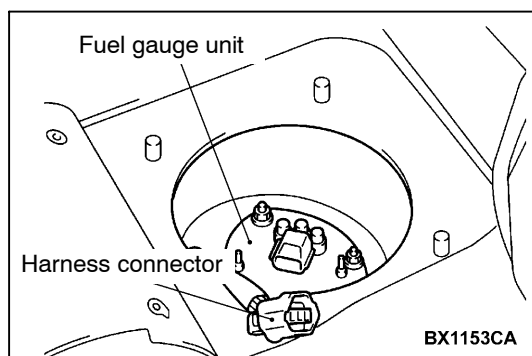
REMOVAL SERVICE POINT

◀A▶ FUEL TANK BREATHER HOSE/FUEL TANK CONNECTOR DISCONNECTION

Lower the fuel tank until the fuel tank breather hose and the fuel tank harness connectors can be disconnected.

INSTALLATION SERVICE POINT**►A◄ FUEL HIGH-PRESSURE HOSE INSTALLATION****Caution**

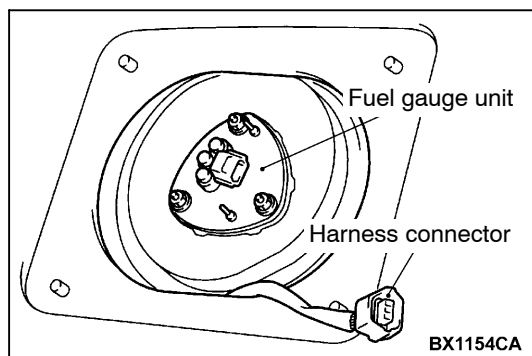
Snap the high-pressure fuel hose one-touch joint into place, then pull back slightly on the hose to assure it is securely fitted. However, the connection should have a play of approx. 3 mm.

**INSPECTION****FUEL GAUGE UNIT REPLACEMENT
<SHORT WHEELBASE>**

1. Slide the front seat (driver's side) forward and turn up the service hole notch on the carpet.
2. Remove the service hole cover and packing.
3. Disconnect the harness connector.
4. Unscrew the mounting nut to remove the fuel gauge unit.
5. Assemble the fuel gauge unit and tighten the mounting nut to the specified torque.

Tightening torque : 2.5 ± 0.4 N·m

6. Connect the harness connector.
7. Install the service hole cover and packing.
8. Return the floor carpet and slide the front seat (driver's side).

**<LONG WHEELBASE>**

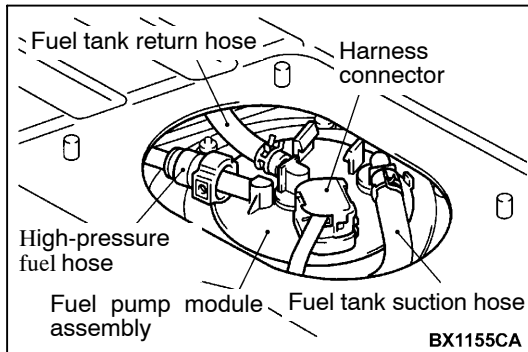
1. Tumble the second seat.
2. Remove the service hole cover (upper side) and the packing located under the second seat.
3. Remove the second seat, the rear scuff plate, the anchor bolts for the outer seat belt (second) and mounting screws of the lower quarter trim. Tear off the carpet. (Refer to GROUP 52A)
4. Remove the service hole cover and the packing located between the front seat and the second seat.
5. Disconnect the harness connector.
6. Unscrew the mounting nut to remove the fuel gauge unit.
7. Assemble the fuel gauge unit and tighten the mounting nut to the specified torque.

Tightening torque : 2.5 ± 0.4 N·m

8. Connect the harness connector.
9. Attach the service hole cover and the packing located between the front seat and the second seat.
10. Restore the carpet; attach the second seat, the rear scuff plate, anchor bolts for the outer seat belt (second) and mounting screws of the lower quarter trim. (Refer GROUP 52A.)
11. Attach the service hole cover located under the second seat and the packing.
12. Restore the second seat.

FUEL GAUGE UNIT CHECK

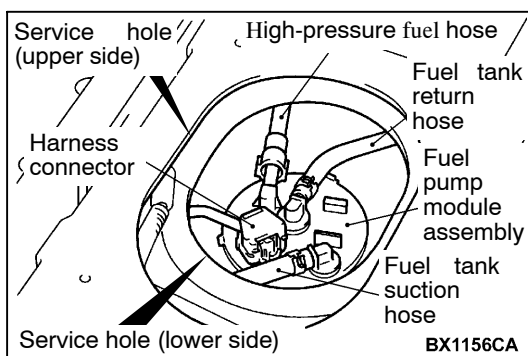
Refer to GROUP 54 – Combination meter

**FUEL PUMP MODULE REPLACEMENT
<SHORT WHEELBASE>**

1. Remove the front scuff plate and outer seat belt (rear) anchor bolt, and then turn the carpet up. (Refer to GROUP 52A)
2. Remove the service hole cover and packing.
3. Disconnect the harness connector.
4. Disconnect the high-pressure fuel hose and the fuel tank hose.
5. Remove the mounting nuts, and remove the fuel pump module.
6. Install the fuel pump module, and tighten the mounting nuts to the specified torque.

Tightening torque: 2.5 ± 0.4 N·m

7. Connect the high-pressure fuel hose and the fuel tank hose.
8. Connect the harness connector.
9. Install the service hole cover and packing.
10. Spread the carpet and then install the front scuff plate and outer seat belt (rear) anchor bolt. (Refer to GROUP 52A.)

**<LONG WHEELBASE>**

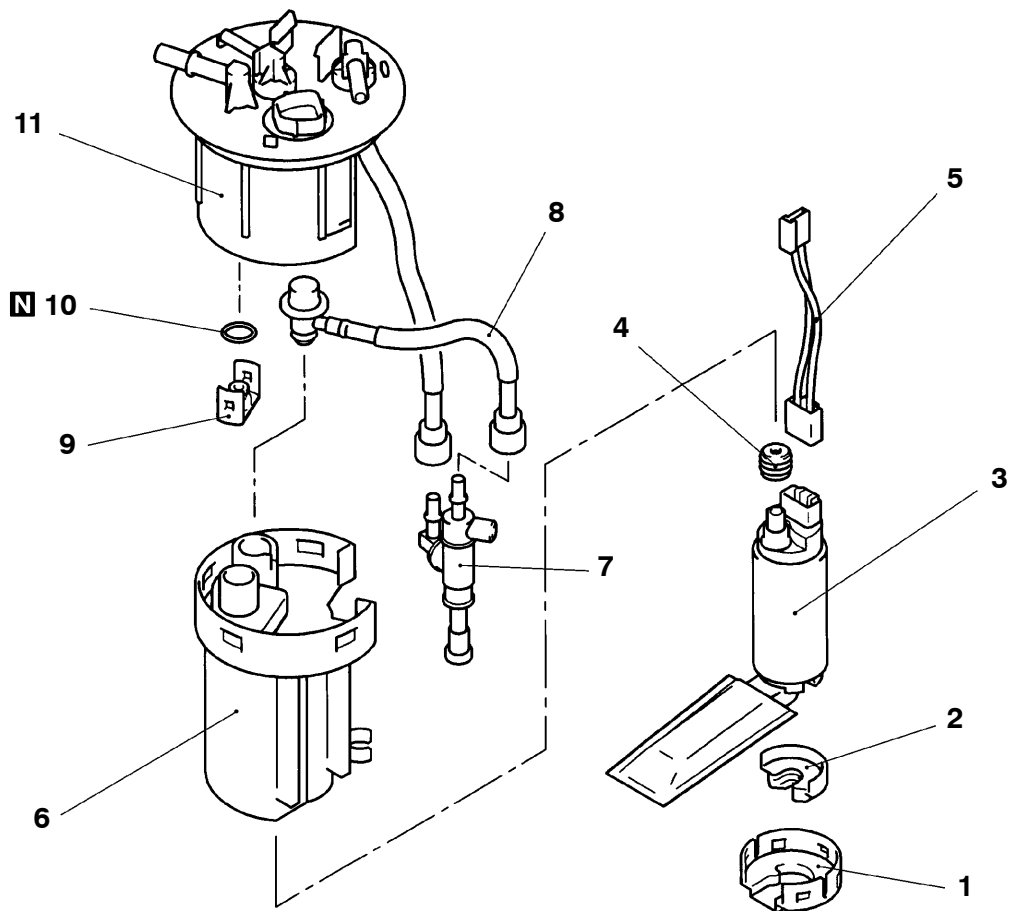
1. Tumble the second seat.
2. Remove the service hole cover (upper side) and the packing.
3. Remove the service hole cover (lower side) and the packing.
4. Disconnect the harness connector.
5. Disconnect the fuel high-pressure hose and the fuel tank hose.
6. Unscrew the mounting nut to remove the fuel pump module.
7. Assemble the fuel pump module and tighten the mounting nut to the specified torque.

Tightening torque: 2.5 ± 0.4 N·m

8. Connect fuel high-pressure hose and the fuel tank hose.
9. Connect the harness connector.
10. Attach the service hole cover (lower side) and the packing.
11. Attach the service hole cover (upper side) and the packing.
12. Restore the second seat.

DISASSEMBLY AND REASSEMBLY**FUEL PUMP MODULE**

<6G7-GDI>



AX0962CA

Disassembly steps

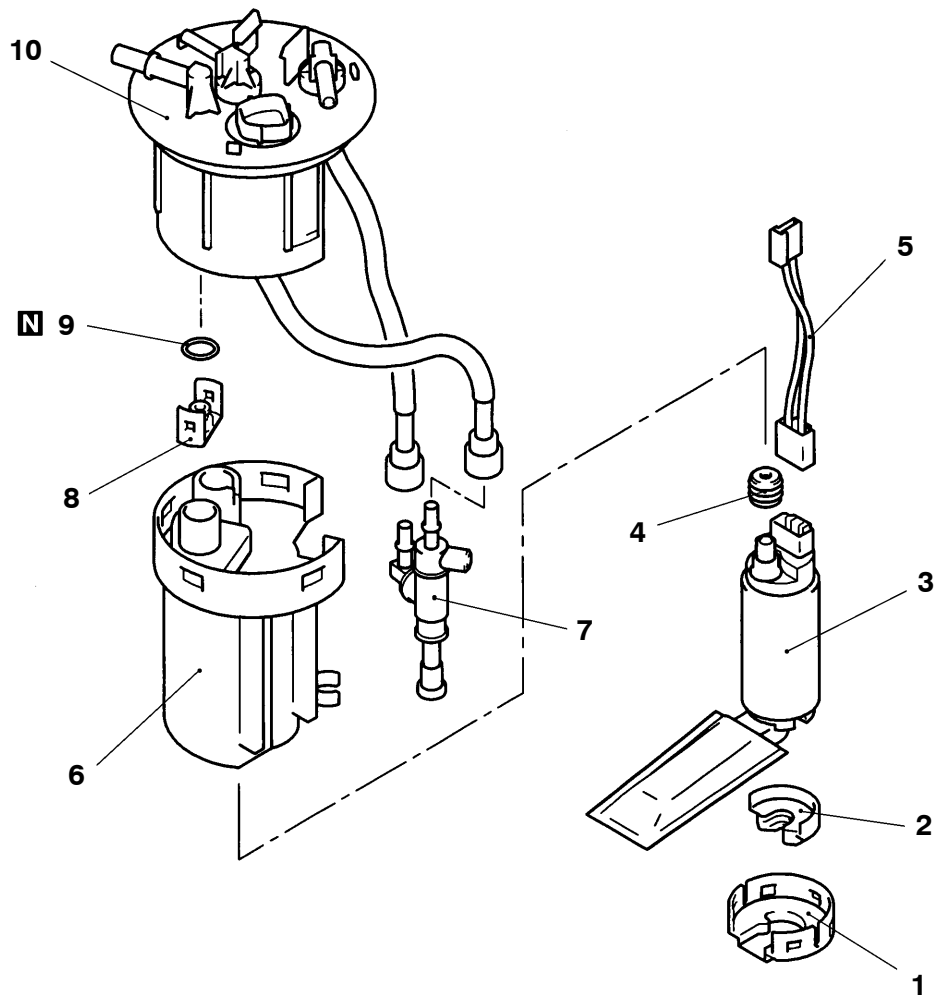
1. Fuel pump bracket
2. Fuel pump cushion
3. Fuel pump (low-pressure)
4. Grommet
5. Pump harness
6. Housing



7. Assist pump
8. Fuel pressure regulator (low-pressure)
9. Cap
10. O-ring
11. Fuel high-pressure filter assembly



<6G7-MPI>



BX1517CA

Disassembly steps

1. Fuel pump bracket
2. Fuel pump cushion
3. Fuel pump
4. Grommet
5. Pump harness



6. Housing
7. Assist pump
8. Cap
9. O-ring
10. Fuel high-pressure filter assembly

**REASSEMBLY SERVICE POINT****►A◄ O-RING/GROMMET INSTALLATION**

Apply a fuel to O-ring and grommet before installing them, to prevent them from being damaged or twisted.

FUEL TANK <4M4>

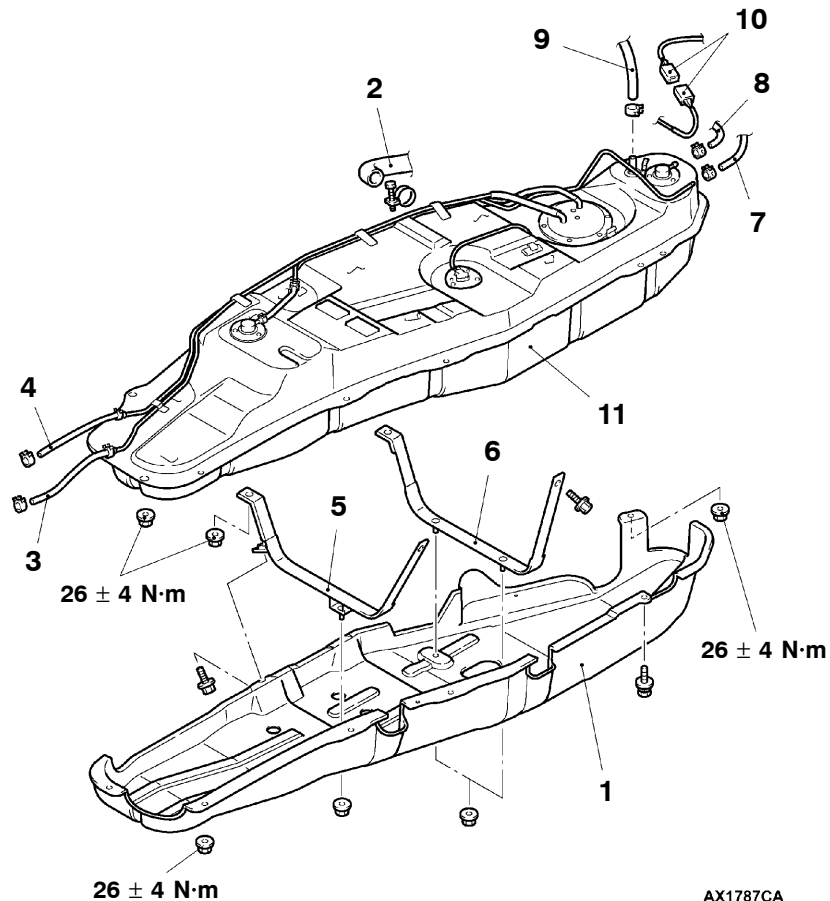
REMOVAL AND INSTALLATION

Pre-removal Operation

- Draining Fuel
- Fuel Line Pressure Reduction
(Refer to GROUP 13A – On-vehicle Service.)
- Transmission Mount Center Member Assembly
(Refer to GROUP 32.)

Post-installation Operation

- Transmission Mount Center Member Assembly
(Refer to GROUP 32.)
- Fuel Leakage Inspection
- Refilling Fuel

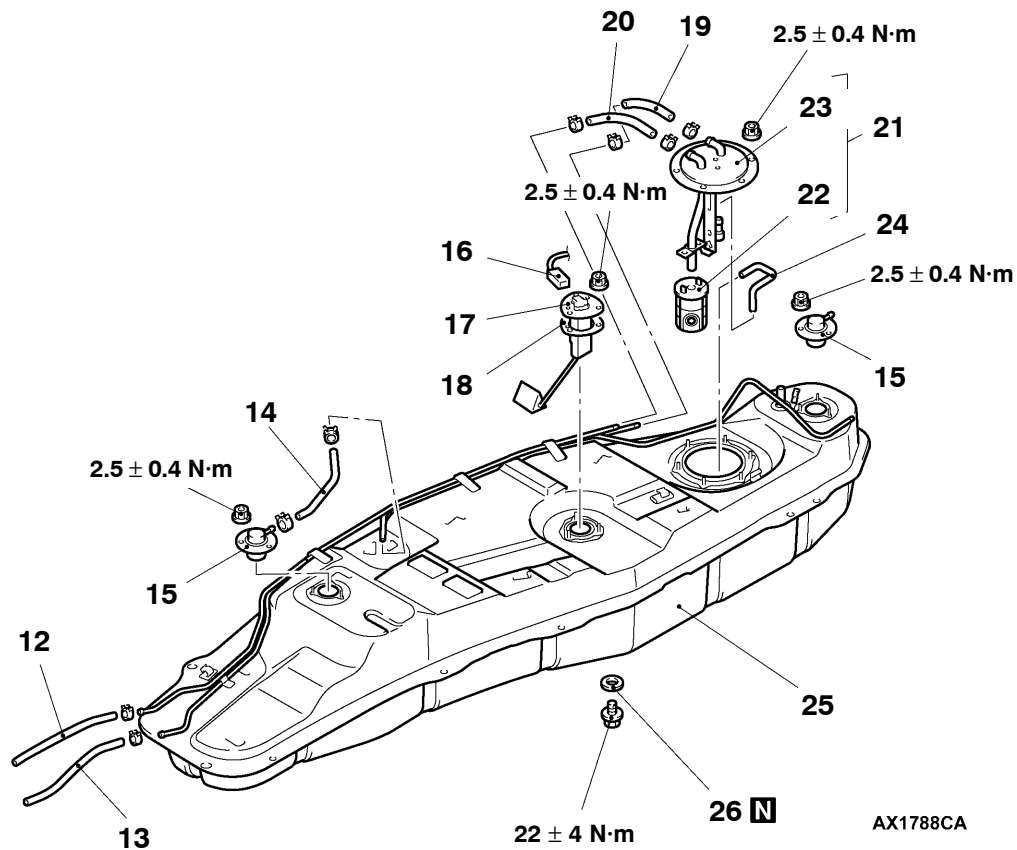


Removal steps

1. Fuel tank under protector
2. Fuel filler hose connection
3. Fuel return hose connection
4. Fuel main hose connection
5. Fuel tank band front
6. Fuel tank band rear

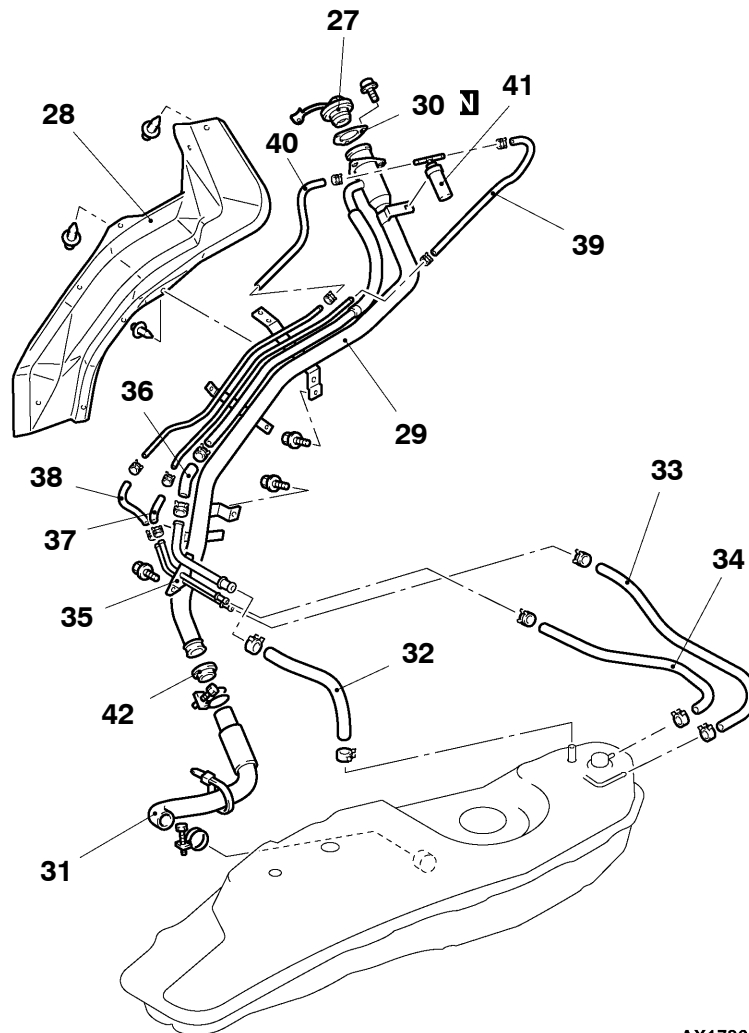


7. Fuel filler neck vapor hose (B) connection
8. Fuel filler neck vapor hose (A) connection
9. Fuel tank breather hose connection
10. Fuel tank harness connector connection
11. Fuel tank assembly



- 12. Fuel return hose
- 13. Fuel main hose
- 14. Fuel tank vapor hose
- 15. Valve assembly
- 16. Fuel tank harness
- 17. Fuel gauge unit
- 18. Packing
- 19. Fuel tank return hose

- 20. Fuel tank main hose
- 21. Fuel filter pipe assembly
- 22. Fuel filter
- 23. Pipe assembly
- 24. Fuel tank suction hose
- 25. Fuel tank
- 26. Gasket



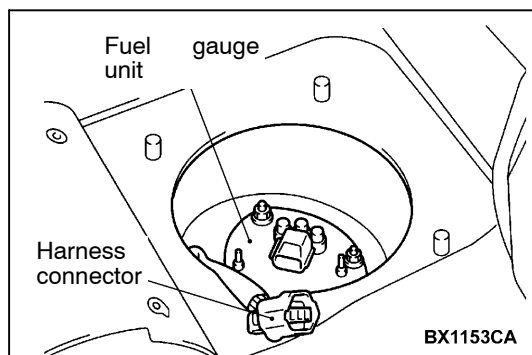
AX1786CA

- | | |
|-------------------------------------|---|
| 27. Fuel cap | 36. Fuel filler neck breather hose |
| 28. Fuel filler neck protector | 37. Fuel filler neck vapor hose |
| 29. Fuel filler neck | 38. Fuel filler neck vapor hose |
| 30. Fuel filler neck gasket | 39. Fuel filler neck vapor hose (B) |
| 31. Fuel filler hose | 40. Fuel filler neck vapor hose (A) |
| 32. Fuel filler neck breather hose | 41. Fuel filler neck check valve assembly |
| 33. Fuel filler neck vapor hose (B) | 42. Shutoff valve |
| 34. Fuel filler neck vapor hose (A) | |
| 35. Fuel filler pipe assembly | |

REMOVAL SERVICE POINT

◀A▶ FUEL TANK BREATHER HOSE/FUEL TANK CONNECTOR DISCONNECTION

Lower the fuel tank until the fuel tank breather hose and the fuel tank harness connectors can be disconnected.



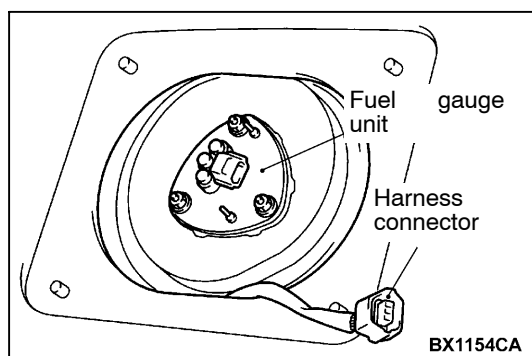
INSPECTION

FUEL GAUGE UNIT REPLACEMENT <SHORT WHEELBASE>

1. Slide the front seat (driver's side) forward and turn up the service hole notch on the carpet.
2. Remove the service hole cover and packing.
3. Disconnect the harness connector.
4. Unscrew the mounting nut to remove the fuel gauge unit.
5. Assemble the fuel gauge unit and tighten the mounting nut to the specified torque.

Tightening torque: 2.5 ± 0.4 N·m

6. Connect the harness connector.
7. Install the service hole cover and packing.
8. Return the floor carpet and slide the front seat(driver's side).



<LONG WHEELBASE>

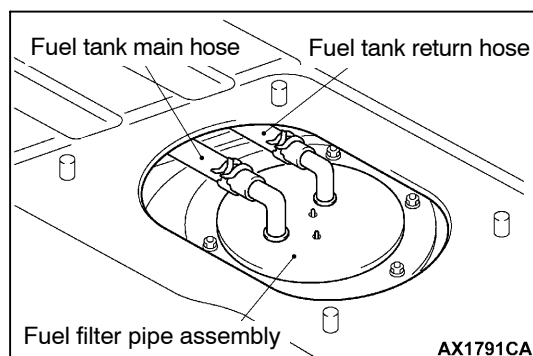
1. Tumble the second seat.
2. Remove the service hole cover (upper side) and the packing located under the second seat.
3. Remove the second seat, the rear scuff plate, the anchor bolts for the outer seat belt (second) and mounting screws of the lower quarter trim. Tear off the carpet. (Refer to GROUP 52A.)
4. Remove the service hole cover and the packing located between the front seat and the second seat.
5. Disconnect the harness connector.
6. Unscrew the mounting nut to remove the fuel gauge unit.
7. Assemble the fuel gauge unit and tighten the mounting nut to the specified torque.

Tightening torque : 2.5 ± 0.4 N·m

8. Connect the harness connector.
9. Attach the service hole cover and the packing located between the front seat and the second seat.
10. Restore the carpet; attach the second seat, the rear scuff plate, anchor bolts for the outer seat belt (second) and mounting screws of the lower quarter trim. (Refer to GROUP 52A.)
11. Attach the service hole cover located under the second seat and the packing.
12. Restore the second seat.

FUEL GAUGE UNIT CHECK

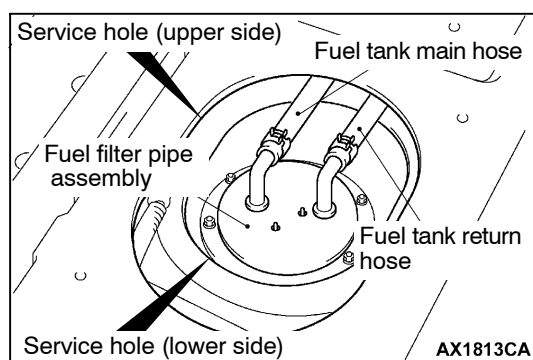
Refer to GROUP 54 – Combination Meter.

**FUEL FILTER PIPE ASSEMBLY REPLACEMENT
<SHORT WHEELBASE>**

1. Remove the front scuff plate and outer seat belt (rear) anchor bolt, and then turn the carpet up. (Refer to GROUP 52A)
2. Remove the service hole cover and packing.
3. Disconnect the fuel tank return hose and the fuel tank main hose.
4. Remove the mounting nuts, and remove the fuel filter pipe assembly.
5. Install the fuel filter pipe assembly, and tighten the mounting nuts to the specified torque.

Tightening torque: 2.5 ± 0.4 N·m

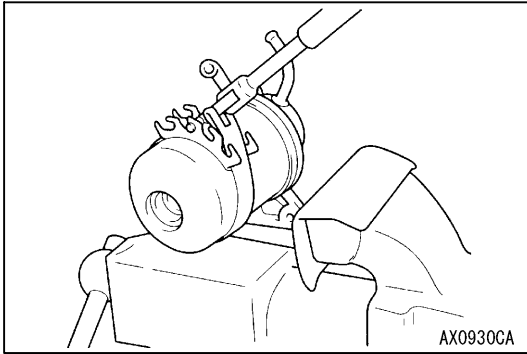
6. Connect the fuel tank return hose and the fuel tank main hose.
7. Install the service hole cover and packing.
8. Spread the carpet and then install the front scuff plate and outer seat belt (rear) anchor bolt. (Refer to GROUP 52A.)

**<LONG WHEELBASE>**

1. Tumble the second seat.
2. Remove the service hole cover (upper side) and the packing.
3. Remove the service hole cover (lower side) and the packing.
4. Disconnect the fuel tank return hose and the fuel tank main hose.
5. Unscrew the mounting nut to remove the fuel filter pipe assembly.
6. Assemble the fuel filter pipe assembly and tighten the mounting nut to the specified torque.

Tightening torque: 2.5 ± 0.4 N·m

7. Connect the fuel tank return hose and the fuel tank main hose.
8. Attach the service hole cover (lower side) and the packing.
9. Attach the service hole cover (upper side) and the packing.
10. Restore the second seat.



INSPECTION

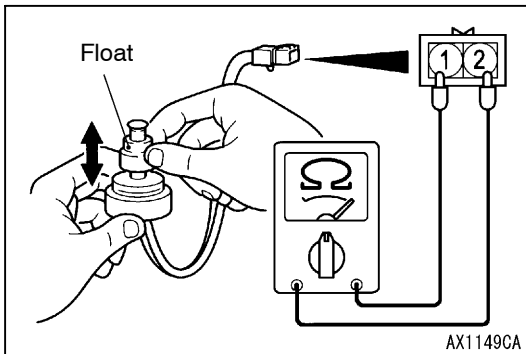
FUEL FILTER CARTRIDGE REPLACEMENT

1. Remove the fuel filler cap, and depressurise the fuel tank.
2. Remove the fuel filter assembly from the fuel filter bracket.
3. Remove the water level sensor from the fuel filter cartridge.
4. Use a filter wrench to remove the fuel filter cartridge from the fuel filter pump.

Caution

Cover the cartridge port with rag to prevent fuel from flowing out.

5. Install a new filter, and bleed the air from fuel line.
(Refer to GROUP 13B – On-vehicle Service.) <4D5>
(Refer to GROUP 13C – On-vehicle Service.) <4M4>
6. Start the engine, and check that there are no fuel leakage.



WATER LEVEL SENSOR CHECK

1. Connect the circuit tester to the water level sensor.
2. There should be continuity when the float is raised, while there is no continuity when it is lowered.
3. Replace the water level sensor if it is faulty.