

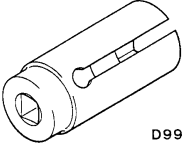
SERVICE SPECIFICATIONS

Items	Standard value	Limit
Waste gate actuator activation pressure kPa	Approx. 96 <4M40>	–
	Approx. 161 <4M41>	–
Manifold distortion of the installation surface mm	0.15 or less	0.20

SEALANT

Item	Specified sealant	Remarks
Thread of the intake manifold mounting bolts	3M Stud Locking No.4170 or equivalent	Anaerobic sealant

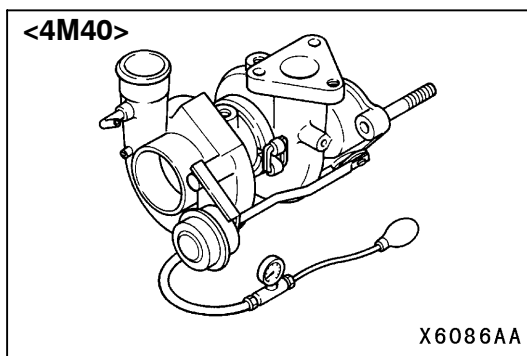
SPECIAL TOOL

Tool	Number	Name	Use
 D998770	MD998770	Oxygen sensor wrench	Removal/Installation of oxygen sensor <6G7>

ON-VEHICLE SERVICE

INTAKE MANIFOLD VACUUM CHECK <6G7>

Refer to GROUP 11A – On-vehicle Service



WASTE GATE ACTUATOR CHECK <4M4>

1. Connect a manual pump (pressure-application type) to nipple.
2. While gradually applying pressure, check the pressure that begins to activate (approx. 1 mm stroke) the waste gate actuator rod.

Standard value:

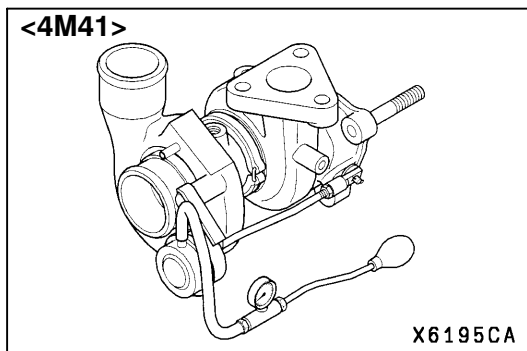
Approx. 96 kPa <4M40>

Approx. 161 kPa <4M41>

Caution

In order to avoid damage to the diaphragm, do not apply a pressure of 115 kPa <4M40>, 181 kPa <4M41> or higher.

3. If there is a significant deviation from the standard value, check the actuator or the waste gate valve: replace if necessary.



AIR CLEANER

REMOVAL AND INSTALLATION

Caution

Parts marked by * are made of recycled-paper mixed plastic material, so observe the following precautions.

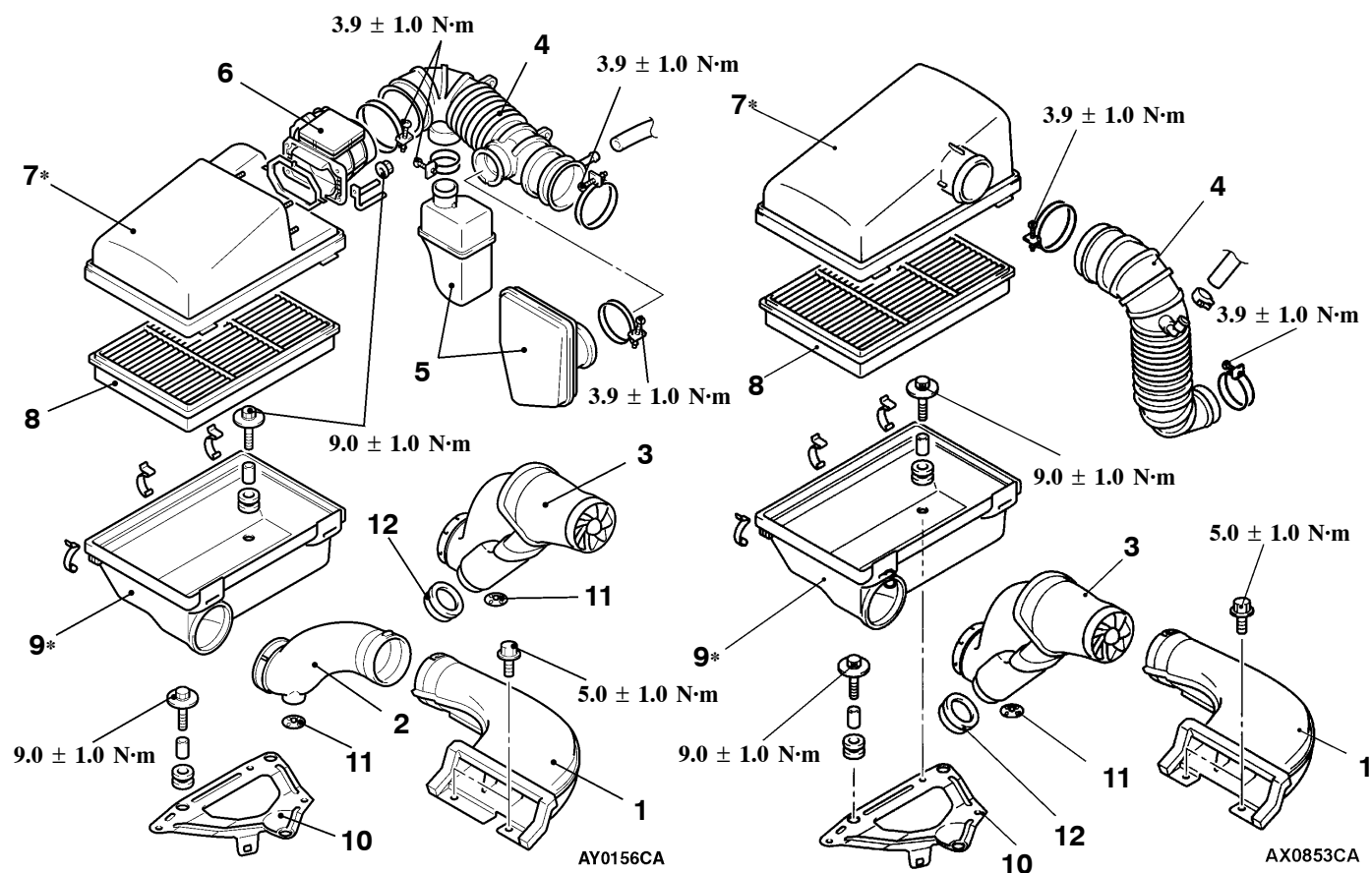
1. Avoid any shock or load to these parts when removing and installing them.
2. Engage the case hinges securely when assembling these parts.

NOTE

Parts marked by * are made of recycled-paper mixed plastic material, so can be disposed of by incineration.

<6G7>

<4M4>



Removal steps

1. Air duct (A)
2. Air duct (B) <6G7 (Vehicles without Pre-cleaner)>
3. Pre-cleaner assembly
4. Air intake hose
5. Resonator <6G7>
6. Air flow sensor assembly <6G7>

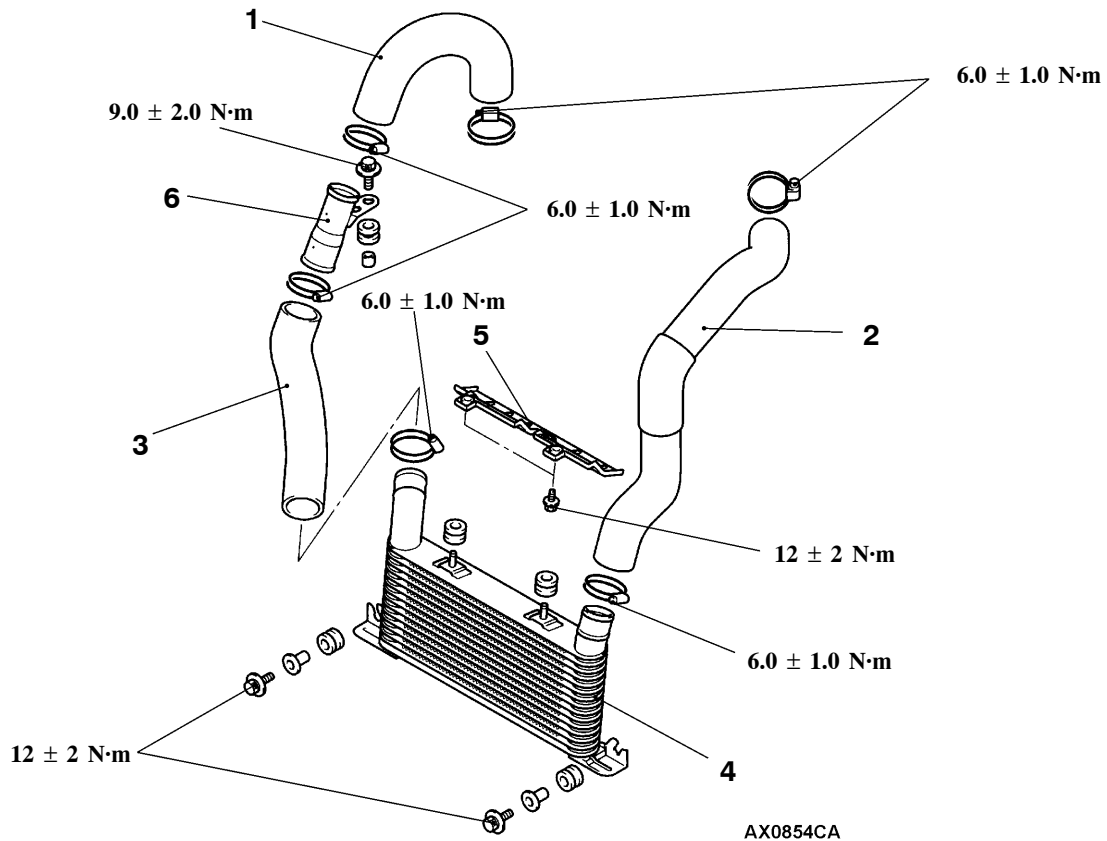
7. Air cleaner cover
8. Air cleaner element
9. Air cleaner body
10. Air cleaner bracket
11. Unloader valve
12. Unloader valve

INTERCOOLER<4M4>

REMOVAL AND INSTALLATION

Pre-removal and Post-installation Operation

- Air Cleaner Removal and Installation (Refer to P.15-3)
- Skid Plate and Under Cover Removal and Installation
- Radiator Shroud Cover Removal and Installation (Refer to GROUP 14.)



Removal steps

1. Intercooler air hose
2. Intercooler air hose
3. Intercooler air hose
4. Intercooler assembly
5. Deflector plate
6. Intercooler air pipe

INSPECTION

- Check the intercooler fins for bending damage or foreign matter.
- Check the intercooler hoses for cracking, damage or wear.

INTAKE MANIFOLD <6G7-MPI>

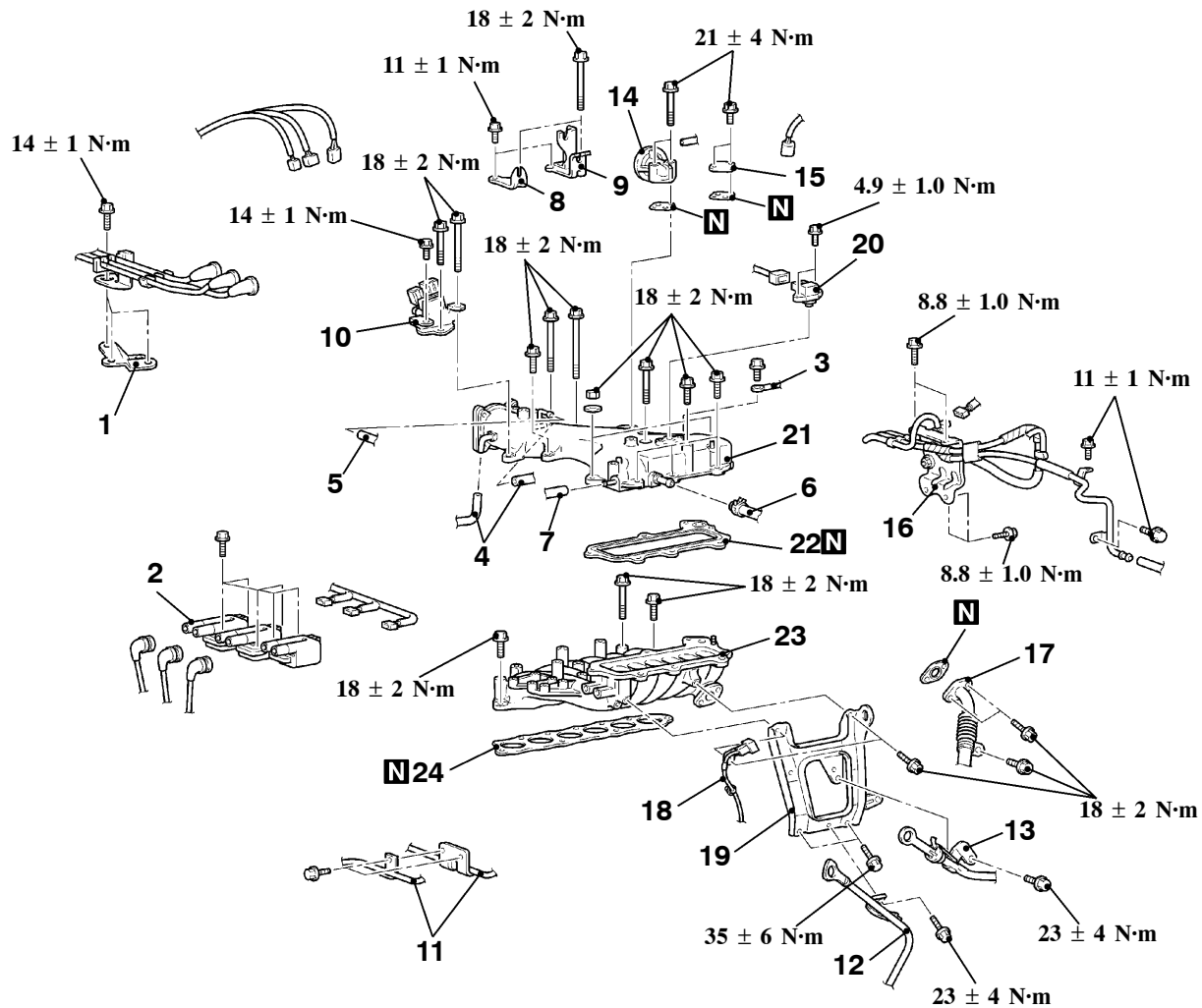
REMOVAL AND INSTALLATION

Pre-removal Operation

- Coolant Draining (Refer to GROUP 14 – On-vehicle Service.)
- Fuel Discharge Prevention (Refer to GROUP 13A – On-vehicle Service.)
- Throttle Body Removal (Refer to GROUP 13A – Throttle Body.)
- Battery and Battery Tray Removal

Post-installation Operation

- Battery and Battery Tray Installation
- Throttle Body installation (Refer to GROUP 13A – Throttle Body.)
- Coolant Refilling (Refer to GROUP 14 – On-vehicle Service.)

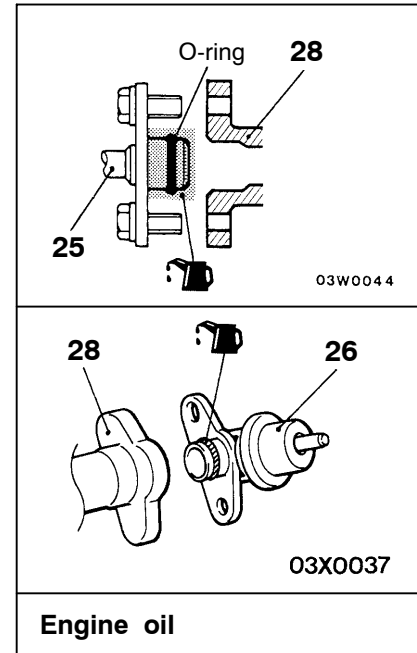
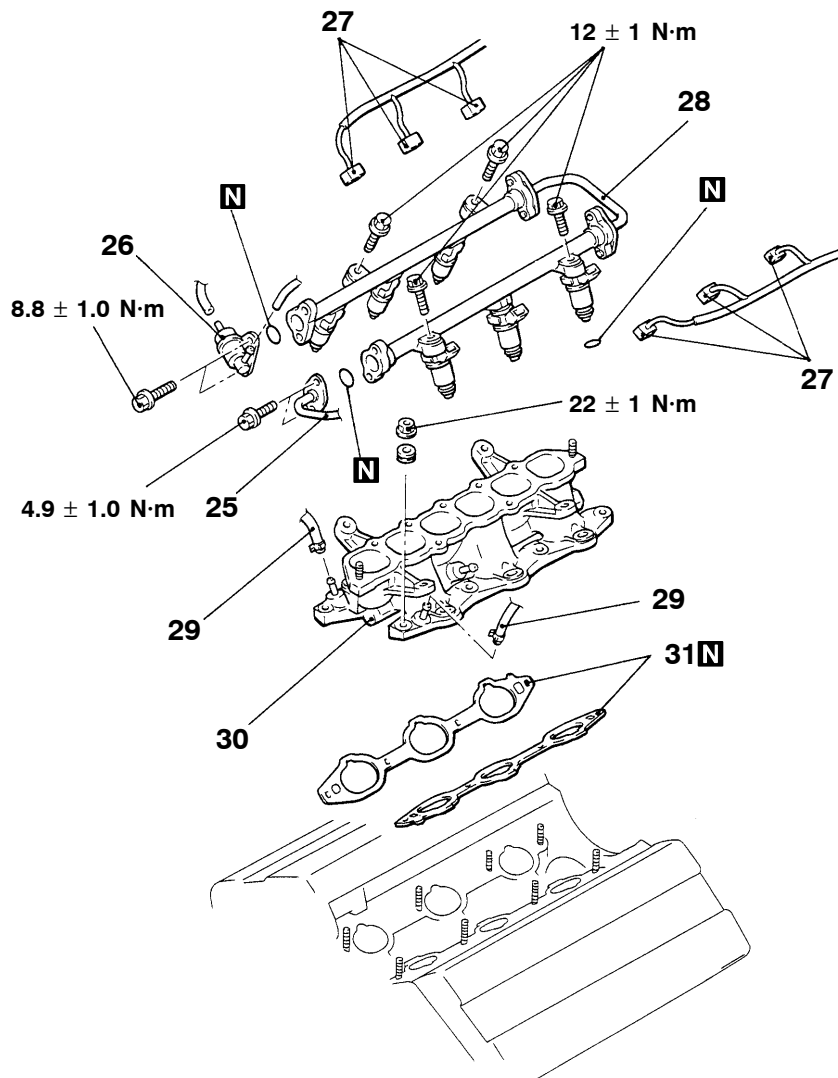


AY0162CA

Removal steps

1. Water outlet fitting bracket
2. Ignition coils
3. Earth cable
4. Vacuum hose connection
5. Vacuum hose connection <Vehicles for Taiwan>
6. Brake booster vacuum hose connection
7. PCV hose connection
8. Accelerator cable bracket <M/T>
9. Throttle cable bracket <A/T>
10. Ignition power transistor
11. Fuel pipe connection
12. Engine Oil Dipstick guide assembly
13. A/T Oil Dipstick guide assembly
14. EGR valve
15. Cover <Vehicles without EGR valve>
16. Solenoid valve and vacuum hose assembly
17. EGR pipe connection
18. Oxygen sensor <Vehicles for Taiwan>
19. Surge tank stay
20. MDP sensor <Vehicles for Taiwan>
21. Air intake fitting
22. Air intake fitting gasket
23. Upper intake manifold
24. Surge tank gasket





05 W0018
00005336

- ▶C◀ 25. High-pressure fuel hose
- ▶C◀ 26. Fuel pressure regulator
- ▶A◀ 27. Injector connector
- ▶A◀ 28. Injector and delivery pipe assembly
- ▶A◀ 29. Water hose connection
- ▶B◀ 30. Intake manifold
- ▶A◀ 31. Intake manifold gasket

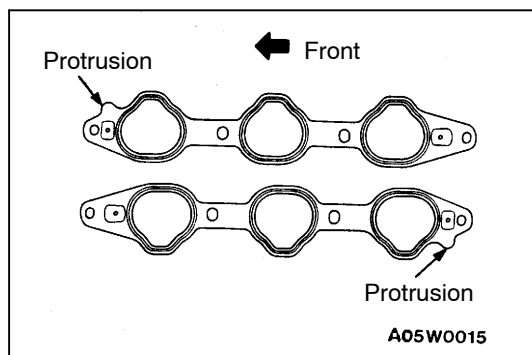
REMOVAL SERVICE POINT

▶A◀ INJECTOR AND DELIVERY PIPE ASSEMBLY REMOVAL

Remove the fuel rail (with the injectors attached to it.)

Caution

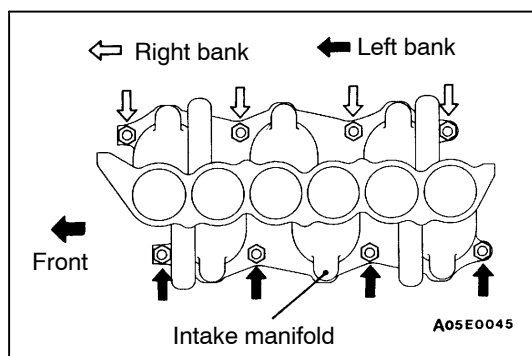
Care must be taken when removing the fuel rail not to drop the injector.



INSTALLATION SERVICE POINTS

►A◄ INTAKE MANIFOLD GASKET INSTALLATION

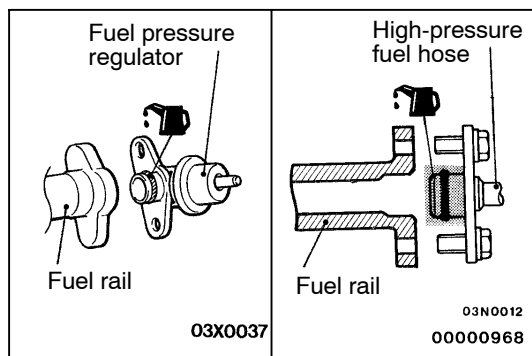
Install the gasket with the protrusions in the position illustrated.



►B◄ INTAKE MANIFOLD INSTALLATION

Tighten the nuts by the following procedure.

Order	Mounting Nuts	Tightening Torque N·m
1	Right-bank nuts	6.5 ± 1.5
2	Left-bank nuts	22 ± 1
3	Right-bank nuts	22 ± 1
4	Left-bank nuts	22 ± 1
5	Right-bank nuts	22 ± 1

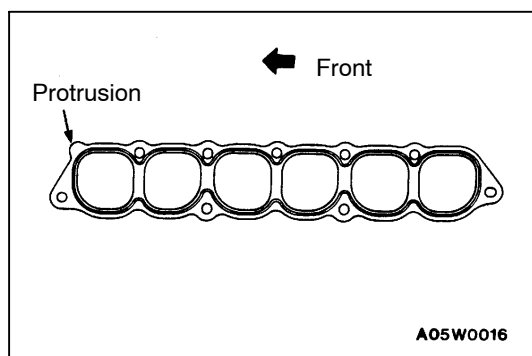


►C◄ FUEL PRESSURE REGULATOR/HIGH-PRESSURE FUEL HOSE INSTALLATION

When connecting the fuel pressure regulator and the high-pressure fuel hose to the fuel rail, apply a small amount of new engine oil to the O-ring. Then insert the high-pressure fuel hose, being careful not to damage the O-ring.

Caution

Be careful not to let any engine oil get into the fuel rail.



►D◄ SURGE TANK GASKET INSTALLATION

Install the gasket with the protrusion in the position illustrated.

INSPECTION

Check the following points; replace the part if a problem is found.

INTAKE MANIFOLD CHECK

1. Check for damage or cracking of any part.
2. Clogging of the negative pressure (vacuum) outlet port, or clogging of the gas passages.
3. Check deflection of installation surface with straight edge and feeler gauge.

Standard value: 0.15 mm or less

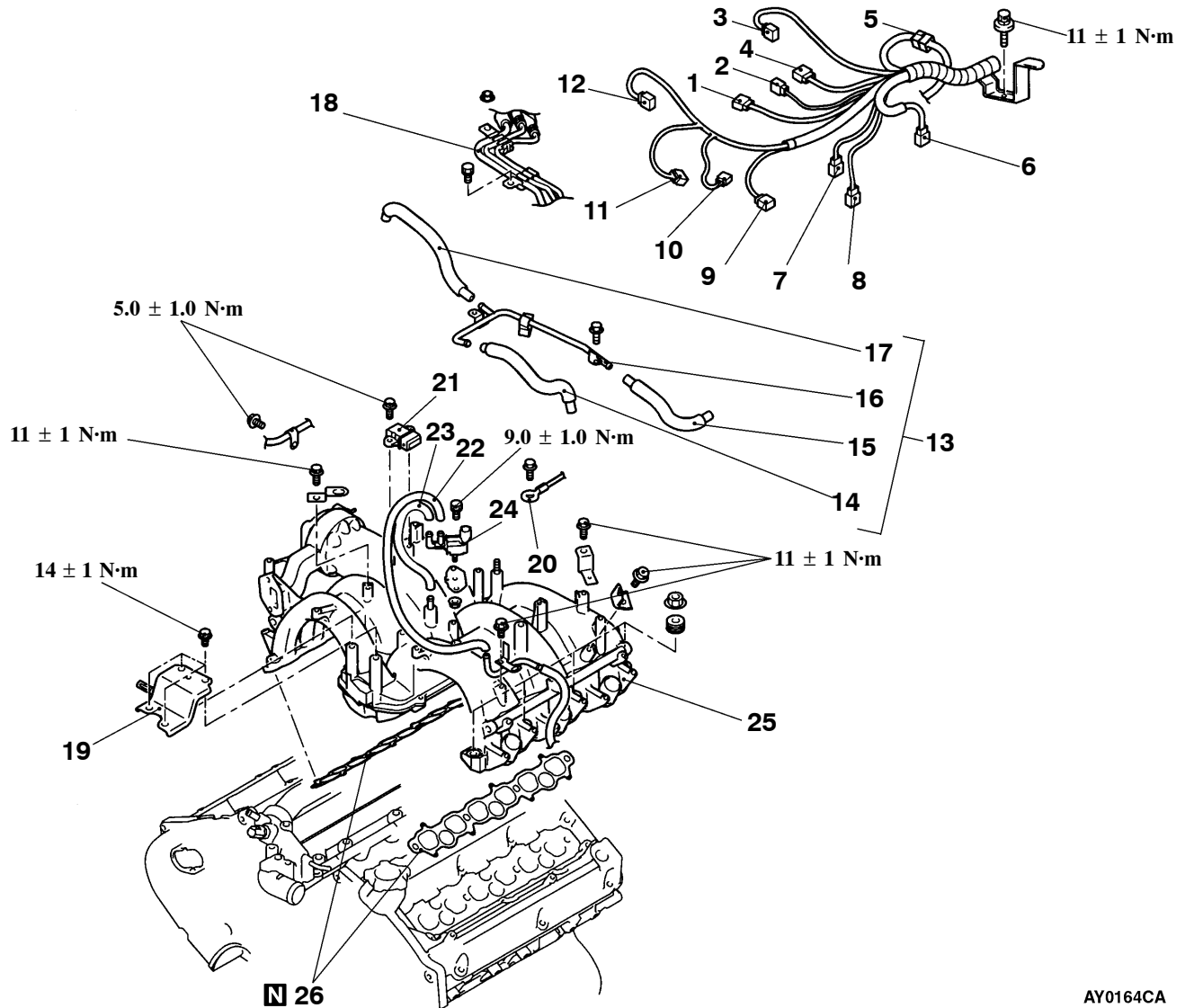
Limit: 0.20 mm

INTAKE MANIFOLD <6G7-GDI>

REMOVAL AND INSTALLATION

Pre-removal and Post-installation Operation

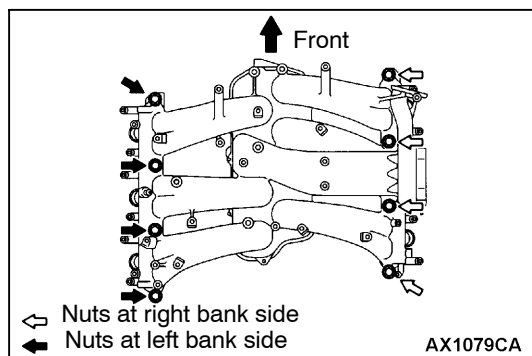
- Coolant Draining and Refilling (Refer to GROUP 14 – On-vehicle Service.)
- Engine Cover Removal and Installation (Refer to GROUP 11B – Timing Belt.)
- Air Cleaner Removal and Installation (Refer to P.15-3.)
- EGR Valve Removal and Installation (Refer to GROUP 17.)
- Ignition Coil Removal and Installation (Refer to GROUP 16.)
- Throttle Body Removal and Installation (Refer to GROUP 13B.)



Removal step

1. Ignition failure sensor connector
2. Knock sensor connector
3. Throttle position sensor connector
4. Control harness and injector harness connection
5. Control harness and ignition coil harness connection
6. Control harness and fuel pressure sensor harness and camshaft position sensor harness connection
7. Purge solenoid valve connector
8. Oxygen sensor connector
9. Crank angle sensor connector
1. Water temperature gauge unit
11. Engine coolant temperature sensor connector

12. Throttle control servo connector
13. PCV hose and pipe assembly
14. PCV hose A
15. PCV hose C
16. PCV hose B
17. PCV pipe
18. Fuel pipe clamp
19. Water outlet fitting bracket
20. Earth cable connection
21. Ignition failure sensor
22. Vacuum hose
23. Purge hose
24. Purge control solenoid valve
25. Intake manifold
26. Intake manifold gasket



REMOVAL SERVICE POINT

►A◄ INTAKE MANIFOLD INSTALLATION

Tighten the intake manifold mounting nuts in the order shown.

NOTE

Tighten the inside nuts first, and then outside nuts.

Order	Nuts to be tightened	Tightening torque N·m
1	Nuts at right bank side	6.5 ± 1.5
2	Nuts at left bank side	22 ± 1
3	Nuts at right bank side	22 ± 1
4	Nuts at left bank side	22 ± 1

INSPECTION

Check the following points; replace the part if a problem is found.

INTAKE MANIFOLD CHECK

1. Check for damage or cracking of any part.
2. Clogging of the negative pressure (vacuum) outlet port, or clogging of the gas passages.
3. Check deflection of installation surface with straight edge and feeler gauge.

Standard value: 0.15 mm or less

Limit: 0.20 mm

INTAKE MANIFOLD AND THROTTLE BODY <4M41>

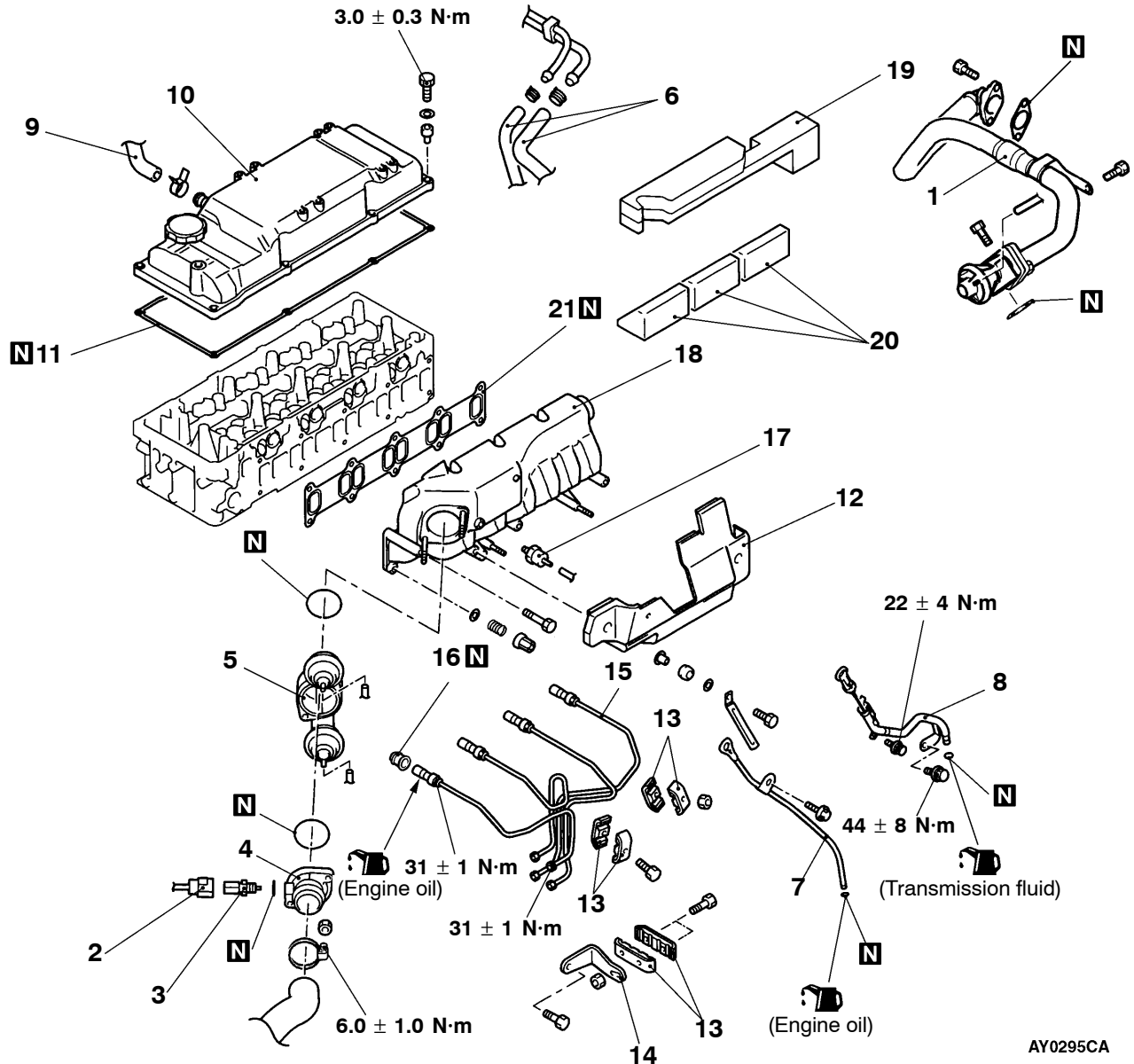
REMOVAL AND INSTALLATION

Pre-removal Operations

- Engine Cover Removal
(Refer to GROUP 11B – Camshaft.)
- Battery and Battery Tray Removal
- Fuel Filter Removal (Refer to GROUP 13C.)
- Skid Plate And Under Cover Removal

Post-installation Operations

- Skid Plate and Under Cover Installation
- Fuel Filter Removal (Refer to GROUP 13C.)
- Battery and Battery Tray Installation
- Evacuation of Air from Fuel Line
(Refer to GROUP 13B – On-vehicle Service.)
- Engine Cover Installation
(Refer to GROUP 11B – Camshaft.)

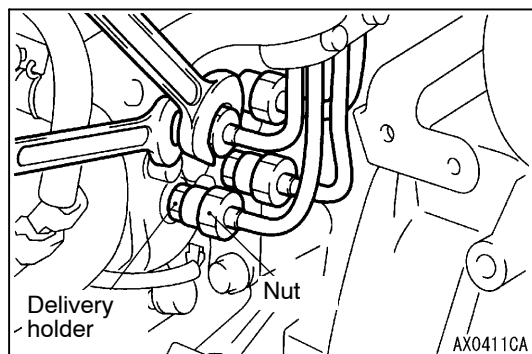
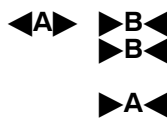


AY0295CA

Removal steps

1. EGR valve and pipe assembly
2. Boost air temperature sensor connector
3. Boost air temperature sensor
4. Intake air fitting
5. Throttle body assembly
6. Fuel hose connection
7. Engine oil level gauge and guide
8. ATF level gauge and guide
9. Breather hose connection
10. Rocker cover

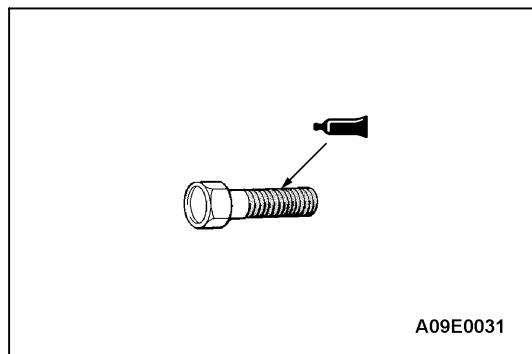
11. Rocker cover gasket
12. Intake manifold cover
13. Clamp
14. Injection pipe stay
15. Injection pipe
16. Injection pipe seal
17. Gas filter assembly
18. Intake manifold
19. Spacer A
20. Spacer B
21. Intake manifold gasket



REMOVAL SERVICE POINT

◀A▶ INJECTION PIPE REMOVAL

Hold the injection pump side delivery holder with a open-end wrench, and loosen the nut.



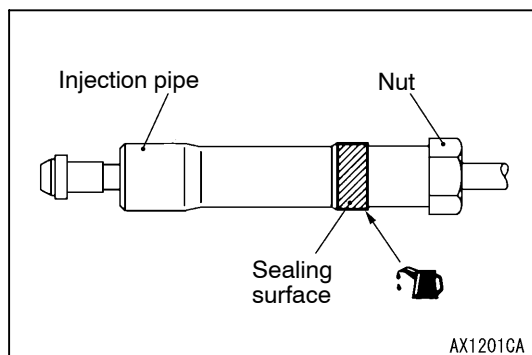
INSTALLATION SERVICE POINTS

▶A◀ INTAKE MANIFOLD INSTALLATION

1. Remove the old sealant from the intake manifold mounting bolt thread.
2. Use a tap (M8×1.25) to remove the old sealant from the bolt hole, and clean by using compressed air.
3. Apply the specified sealant to the intake manifold mounting bolt thread, and install the intake manifold by using the mounting bolts.

Specified sealant:

3M Stud Locking No. 4170 or equivalent



►B◄ INJECTION PIPE SEAL/INJECTION PIPE INSTALLATION

1. Apply a small amount of engine oil to a new injection pipe seal, and install it, being careful not to damage it.
2. Apply a small amount of engine oil to the injection pipe sealing surface, and then connect the injection pipes.
3. Use a spanner to hold the delivery holder at the injection pump side in the same manner as removal, and then install the injection pipe nuts.
4. Tighten the injection pipe nut to the specified torque.

Tightening torque: 31 ± 1 N·m

INSPECTION

INTAKE MANIFOLD CHECK

1. Check for damage or cracking of any part.
2. Clogging of the negative pressure (vacuum) outlet port, or clogging of the gas passages.
3. Check distortion of installation surface with straight edge and thickness gauge.

Standard value: 0.15 mm or less

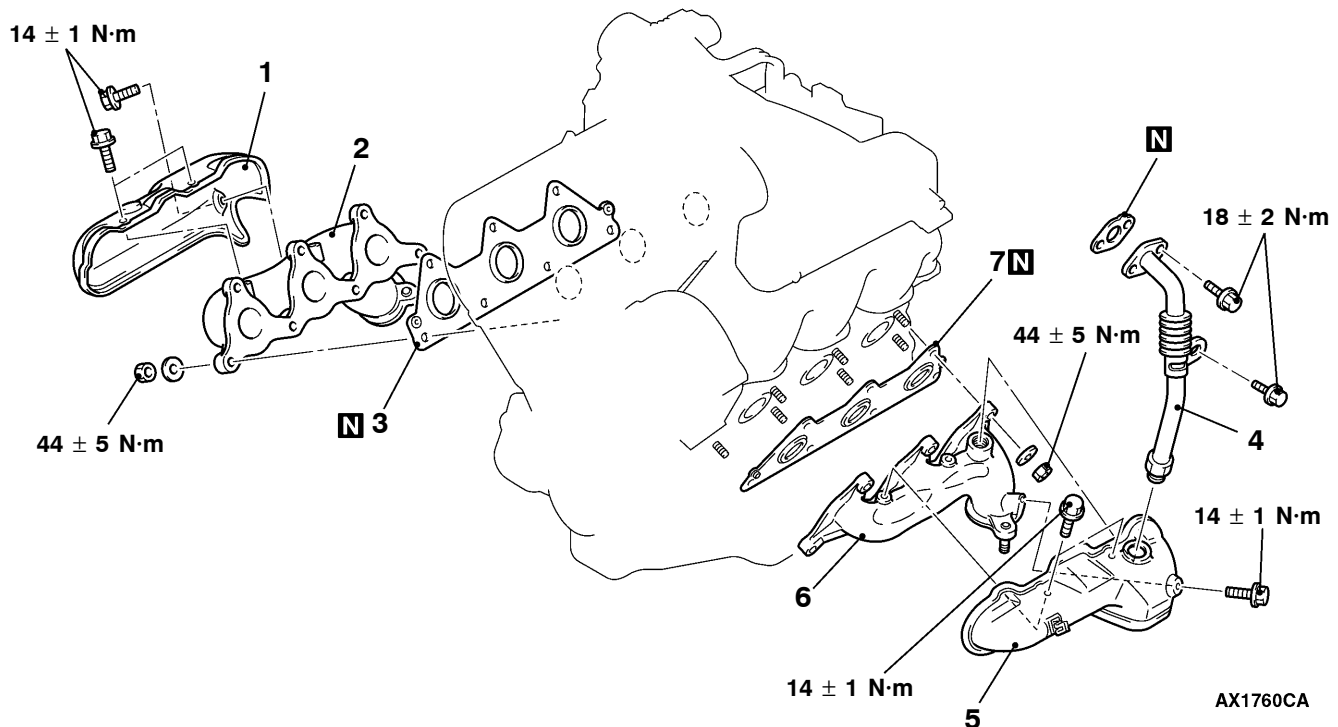
Limit: 0.20 mm

EXHAUST MANIFOLD <6G7-MPI>

REMOVAL AND INSTALLATION

Pre-removal and Post-installation Operation

- Front Exhaust Pipe Removal and Installation (Refer to P.15-23.)
- Air Cleaner Removal and Installation (Refer to P.15-3.)
- Battery and Battery Tray Removal and Installation
- Engine Oil Dipstick Guide Removal and Installation



Removal steps

1. Heat protector (R.H.)
2. Exhaust manifold (R.H.)
3. Exhaust manifold gasket (R.H.)
4. EGR pipe

5. Heat protector (L.H.)
6. Exhaust manifold (L.H.)
7. Exhaust manifold gasket (L.H.)

INSPECTION

Check the following points; replace the part if a problem is found.

EXHAUST MANIFOLD CHECK

1. Check for damage or cracking of any part.
2. Using a straight edge and a feeler gauge, check for distortion of the cylinder head installation surface.

Standard value: 0.15 mm or less

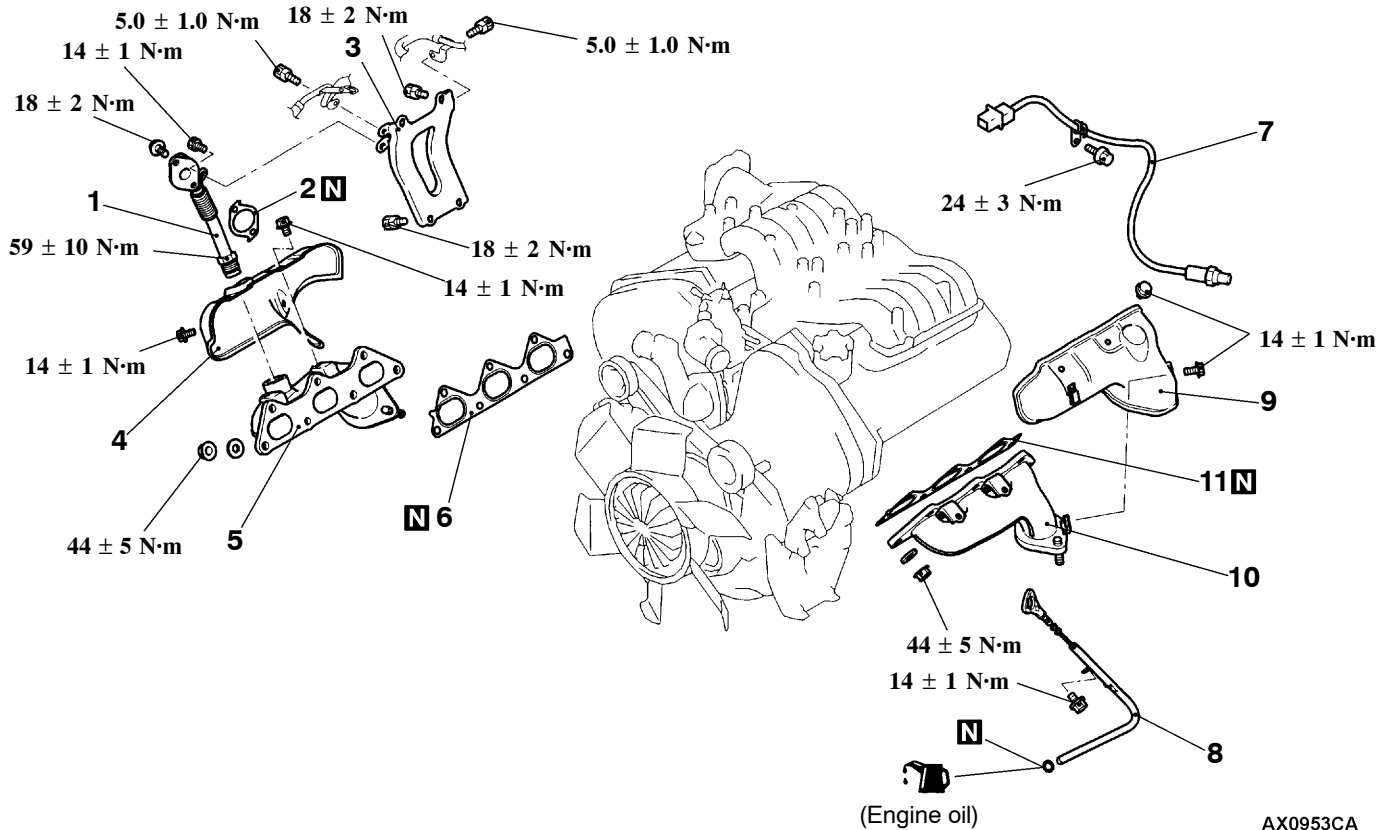
Limit: 0.20 mm

EXHAUST MANIFOLD <6G7-GDI>

REMOVAL AND INSTALLATION

Pre-removal and Post-installation Operations

- Engine Cover Removal And Installation (Refer to GROUP 11B – Timing Belt)
- Battery, Battery Tray Removal And Installation
- Air Cleaner Assembly Removal And Installation (Refer to P.15-3.)
- Skid Plate And Under Cover Removal And Installation
- Front Exhaust Pipe Removal And Installation (Refer to P.15-23.)
- Front Catalytic Converter Removal And Installation (Refer to GROUP 17.)



Removal steps

1. EGR pipe
2. EGR pipe gasket
3. Throttle body stay
4. Heat protector
5. Exhaust manifold
6. Exhaust manifold gasket

7. Oxygen sensor
8. Engine oil level gauge and guide
9. Heat protector
10. Exhaust manifold
11. Exhaust manifold gasket

INSPECTION

Check the following points; replace the part if a problem is found.

EXHAUST MANIFOLD CHECK

1. Check for damage or cracking of any part.
2. Using a straight edge and a feeler gauge, check for distortion of the cylinder head installation surface.

Standard value: 0.15 mm or less

Limit: 0.20 mm

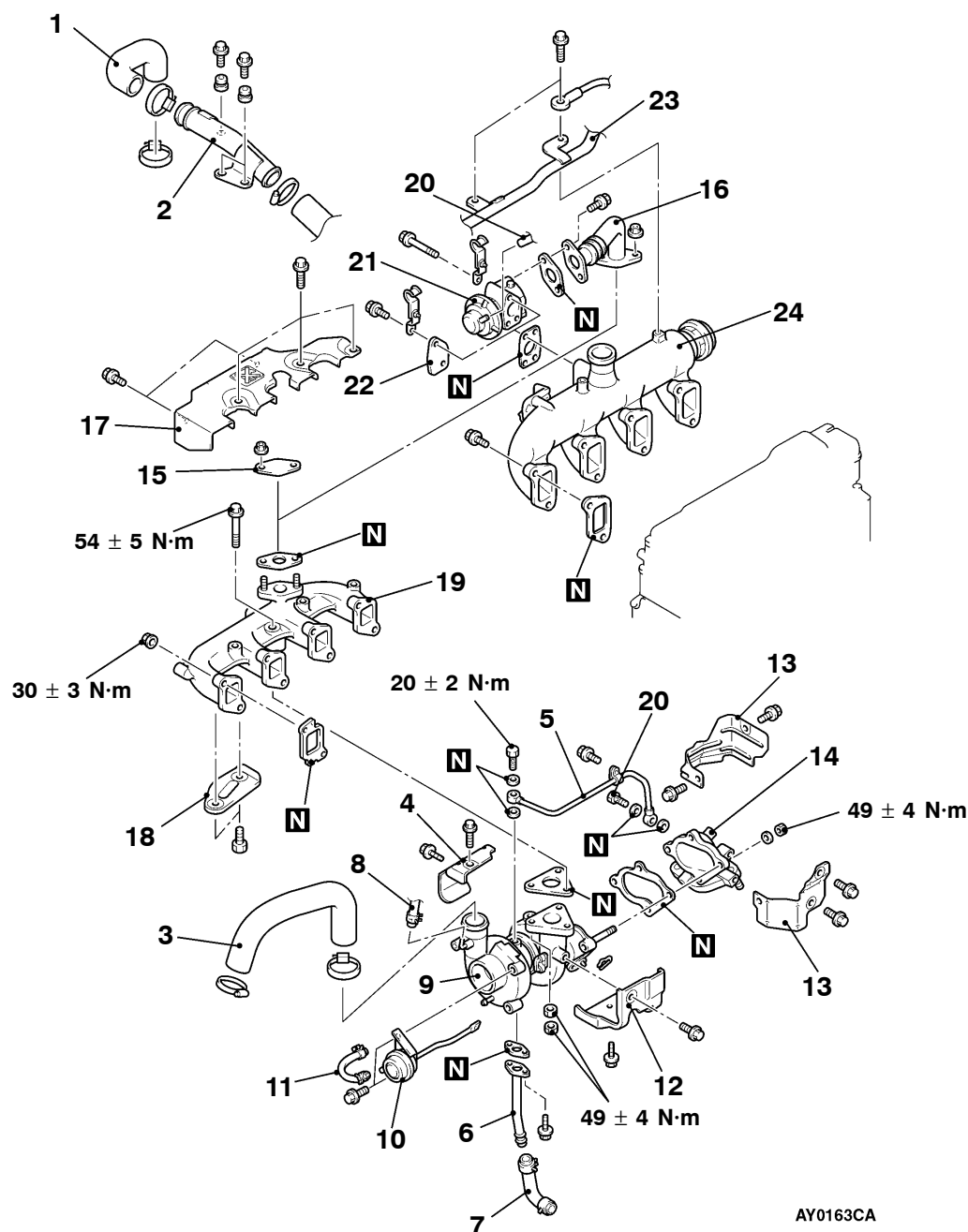
AX0953CA

INTAKE MANIFOLD, EXHAUST MANIFOLD AND TURBOCHARGER <4M40>

REMOVAL AND INSTALLATION

Pre-removal and Post-installation Operations

- Engine coolant draining and refilling (Refer to GROUP 14 – On-vehicle Service.)
- Air cleaner assembly removal and installation (Refer to P.15-3.)
- Skid plate and under cover removal and installation
- Front exhaust pipe removal and installation (Refer to P.15-27.)



Removal steps

- | | |
|---|--|
| <ol style="list-style-type: none"> 1. Air intake hose 2. Air pipe 3. Intercooler air hose 4. Turbocharger cover 5. Oil pipe 6. Oil return pipe 7. Oil return hose 8. Vacuum hose connection ►A◄ 9. Turbocharger assembly 10. Waste gate actuator 11. Vacuum hose 12. Turbocharger cover | <ol style="list-style-type: none"> 13. Turbocharger cover 14. Exhaust fitting assembly 15. Cover <Vehicles without EGR valve> 16. EGR pipe 17. Heat protector 18. Heat protector 19. Exhaust manifold 20. Vacuum hose connection 21. EGR valve 22. Cover <Vehicles without EGR valve> 23. Vacuum pipe connection 24. Intake manifold |
|---|--|

INSTALLATION SERVICE POINT

►A◄ TURBOCHARGER ASSEMBLY INSTALLATION

1. Check the internal surface, the eye bolt and the mating surface of the oil pipe and water pipe for clogging, and clean if necessary.
2. If deposits of carbon are accumulated on the turbocharger oil passage, remove them and clean using the compressed air.

Caution

Be careful not to allow foreign material to enter the turbocharger.

3. Add clean engine oil through the oil feed pipe port on the turbocharger.

INSPECTION

TURBOCHARGER ASSEMBLY CHECK

- Visually check the turbine wheel and the compressor wheel for cracking or other damage.
- Check whether the turbine wheel and the compressor wheel can be easily turned by hand.
- Check for oil leakage from the turbocharger assembly.
- Check whether or not the waste gate valve remains open.
If any problem is found, replace the part after disassembly.

OIL PIPE AND OIL RETURN PIPE CHECK

Check the oil pipe and oil return pipe for clogging, bending, or other damage. If there is clogging, clean it.

EXHAUST MANIFOLD CHECK

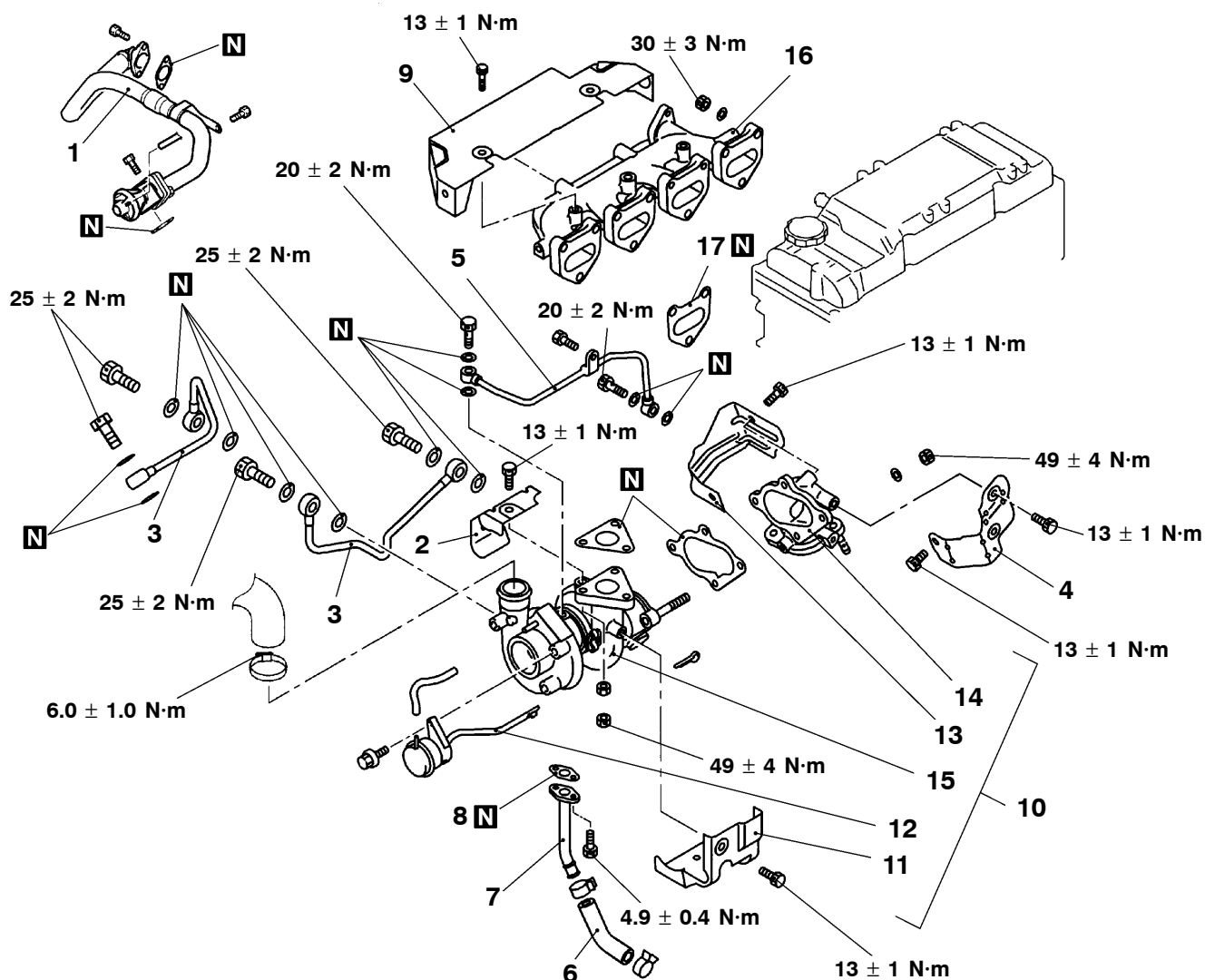
Damage or cracking of any part.

TURBOCHARGER AND EXHAUST MANIFOLD <4M41>

REMOVAL AND INSTALLATION

Pre-removal and Post-installation Operations

- Engine Coolant Draining and Refilling (Refer to GROUP 14 – On-vehicle Service.)
- Engine Cover Removal and Installation (Refer to GROUP 11C – Camshaft)
- Air cleaner Assembly Removal and Installation (Refer to P.15-3.)
- Skid Plate and Under Cover Removal and Installation
- Front Exhaust Pipe Removal and Installation (Refer to P.15-27.)



AY0294CA

Removal steps

1. EGR valve and pipe assembly
2. Turbocharger cover
3. Water pipe
4. Turbocharger cover
5. Oil pipe
6. Oil return hose
7. Oil return pipe
8. Oil return pipe gasket
9. Heat protector
10. Turbocharger and exhaust fitting assembly
11. Turbocharger cover
12. Waste gate actuator
13. Turbocharger cover
14. Exhaust fitting
15. Turbocharger assembly
16. Exhaust manifold
17. Exhaust manifold gasket



INSTALLATION SERVICE POINT

►A◄ TURBOCHARGER ASSEMBLY INSTALLATION

1. Check the internal surface, the eye bolt and the mating surface of the oil pipe and water pipe for clogging, and clean if necessary.
2. If deposits of carbon are accumulated on the turbocharger oil passage, remove them and clean using the compressed air.

Caution

Be careful not to allow foreign material to enter the turbocharger.

3. Add clean engine oil through the oil feed pipe port on the turbocharger.

INSPECTION

Check the following points; replace the part if a problem is found.

EXHAUST MANIFOLD CHECK

1. Check for damage or cracking of any part.
2. Using a straight edge and a feeler gauge, check for distortion of the cylinder head installation surface.

Standard value: 0.15 mm or less

Limit: 0.20 mm

TURBOCHARGER ASSEMBLY CHECK

- Visually check the turbine wheel and the compressor wheel for cracking or other damage.
 - Check whether the turbine wheel and the compressor wheel can be easily turned by hand.
 - Check for oil leakage from the turbocharger assembly.
 - Check whether or not the waste gate valve remains open.
- If any problem is found, replace the part after disassembly.

OIL PIPE AND OIL RETURN PIPE CHECK

Check the oil pipe and oil return pipe for clogging, bending, or other damage. If there is clogging, clean it.

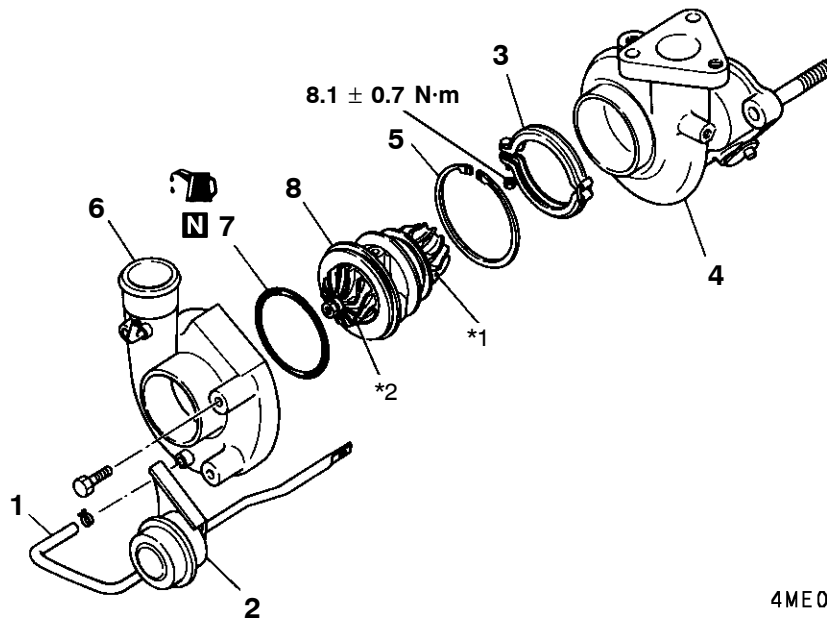
EXHAUST MANIFOLD CHECK

Damage or cracking of any part.

TURBOCHARGER

DISASSEMBLY AND REASSEMBLY

<4M40>



4ME0078

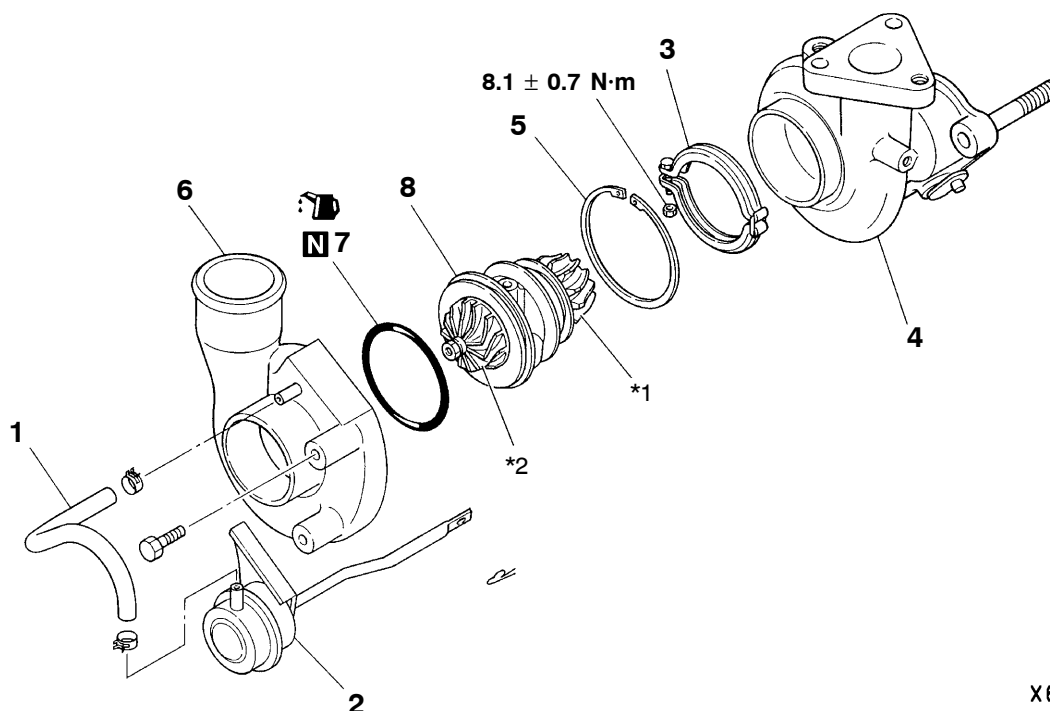
Disassembly steps

- 1. Hose
- 2. Actuator
- 3. Coupling
- 4. Turbine housing
- 5. Snap ring
- 6. Compressor cover

- 7. O-ring
- 8. Cartridge assembly

- *1: Turbine wheel
- *2: Compressor wheel

<4M41>



X6196CA

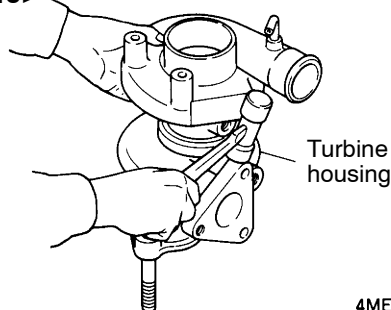
Disassembly steps

1. Hose
2. Actuator
3. Coupling
4. Turbine housing
5. Snap ring
6. Compressor cover

- A◄ 7. O-ring
8. Cartridge assembly

- *1: Turbine wheel
*2: Compressor wheel

<4M40>



4ME0079

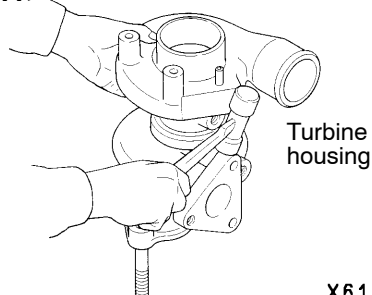
DISASSEMBLY SERVICE POINTS

◄A► TURBINE HOUSING REMOVAL

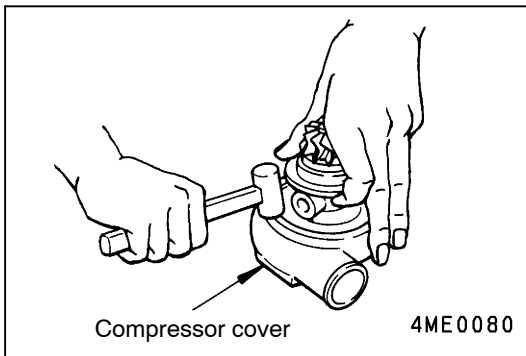
Caution

1. Tap all over the circumferential surface of the turbine housing with a rubber hammer or any other similar tool, using care not to damage it.
2. The turbine wheel blades are easy to bend. Use care so that they do not contact the turbine housing.

<4M41>



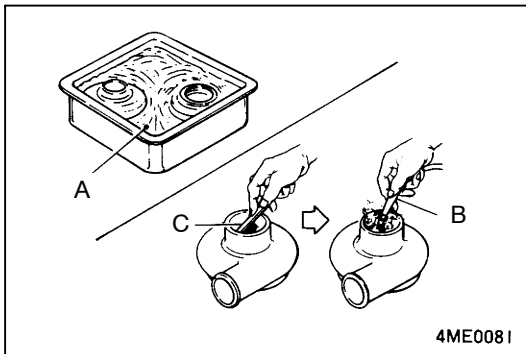
X6197CA



◀B▶ COMPRESSOR COVER REMOVAL

Caution

1. Tap all over the circumferential surface of the compressor cover with a rubber hammer or any other similar tool, using care not to damage it.
2. The compressor wheel blades are easy to bend. Use care so that they do not contact the compressor cover.



CLEANING

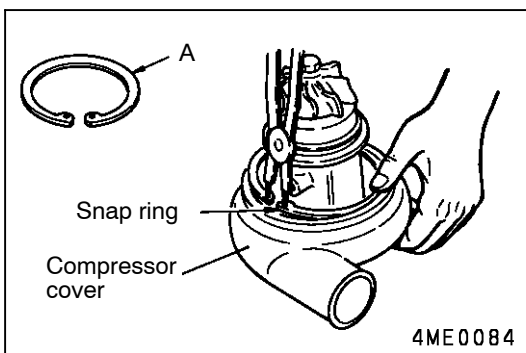
TURBINE HOUSING/COMPRESSOR COVER

1. Prior to cleaning, visually check the disassembled parts for evidences of burns, abrasions or other flaws because they may become unrecognizable after washing. Replace if necessary.
2. Immerse the disassembled parts in the nonflammable solvent A (DAI-CLEANER T-30 from Daido Chemical Industry Co., Ltd.). Remove them from the solvent and blow compressed air B against them. Scrape off foreign matters, if any, using a plastic scraper C before the immersion.

REASSEMBLY SERVICE POINTS

▶A◀ O-RING INSTALLATION

Apply a thin coat of engine oil evenly to the entire circumferential surface of O-ring before installing it.



▶B◀ SNAP RING INSTALLATION

Install the snap ring in the compressor cover with the tapered surface A facing upward.

Caution

Hold the snap ring with one hand not to let it bounce out.

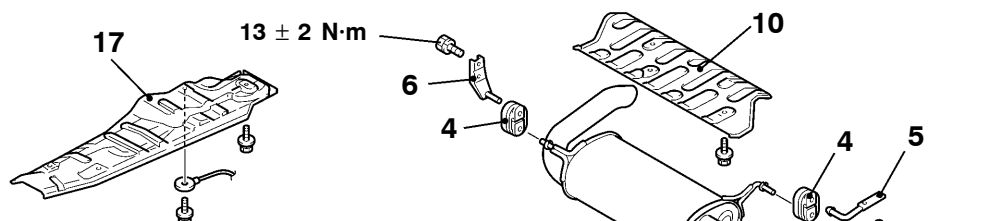
EXHAUST PIPE AND MAIN MUFFLER <6G7>

REMOVAL AND INSTALLATION

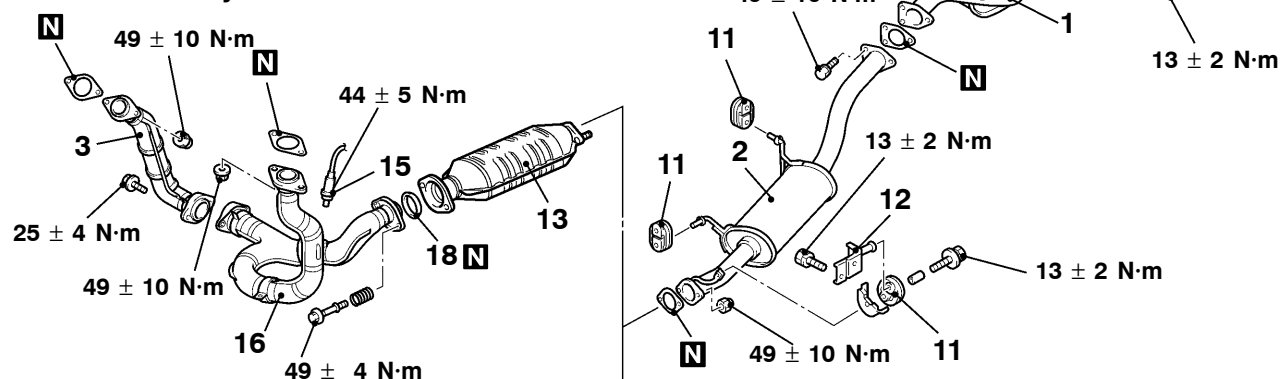
Pre-removal and Post-installation Operation

- Front Under Cover Removal and Installation

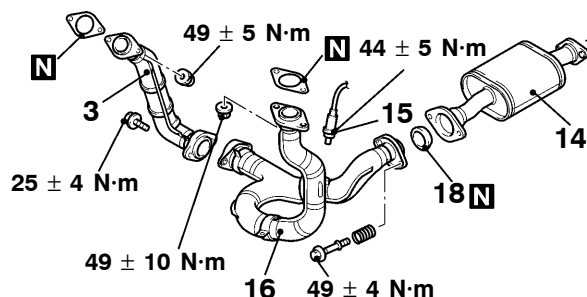
<Short wheelbase>



<Vehicles with catalytic converter>



<Vehicles without catalytic converter>



AY0157CA

Exhaust main muffler and rear floor heat protector removal steps

1. Exhaust main muffler
4. Hanger
5. Hanger bracket
6. Hanger bracket
10. Rear floor heat protector

Center exhaust pipe removal steps

2. Center exhaust pipe
11. Hanger
12. Hanger bracket

Front exhaust pipe removal

- Under cover
- 3. Front exhaust pipe (R.H.)
- 15. Oxygen sensor
- 16. Front exhaust pipe (L.H.)
- 18. Seal ring

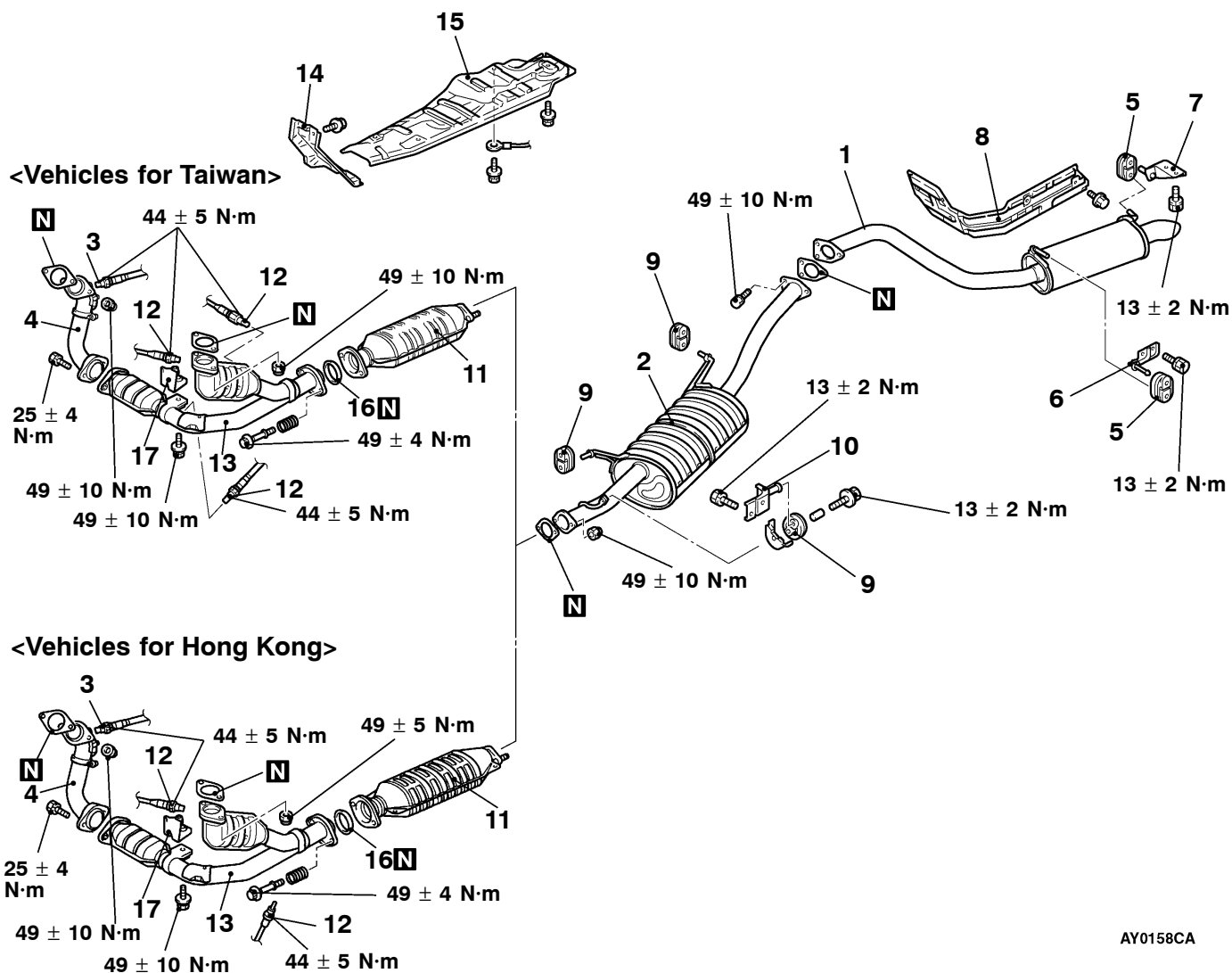


Front floor heat protector removal steps

13. Catalytic converter
14. Pre-muffler
15. Oxygen sensor
16. Front exhaust pipe (L.H.)
17. Front floor heat protector
18. Seal ring



<Long wheelbase (Vehicles for Hong Kong and Taiwan)>



AY0158CA

Tail exhaust pipe and rear floor heat protector removal steps

1. Tail exhaust pipe
5. Hanger
6. Hanger bracket
7. Hanger bracket
8. Rear floor heat protector

Exhaust main muffler removal steps

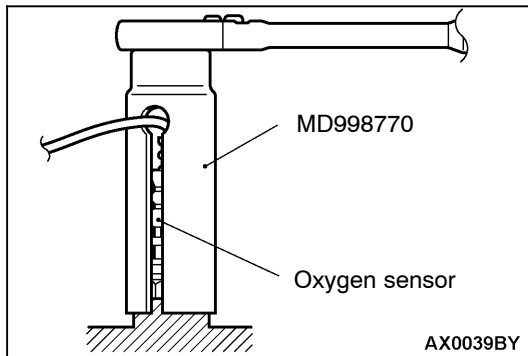
2. Exhaust main muffler
9. Hanger
10. Hanger bracket

Front exhaust pipe removal

- Under cover
- 3. Oxygen sensor
- 4. Front exhaust pipe

Dash heat protector and front floor heat protector removal steps

11. Catalytic converter
12. Oxygen sensor
13. Front catalytic converter
14. Dash heat protector
15. Front floor heat protector
16. Seal ring



REMOVAL SERVICE POINT

◀A▶ OXYGEN SENSOR REMOVAL

Use special tool to remove the oxygen sensor.

INSTALLATION SERVICE POINT

▶A◀ OXYGEN SENSOR INSTALLATION

Use special tool to install the oxygen sensor.

EXHAUST PIPE AND MAIN MUFFLER <4M4>

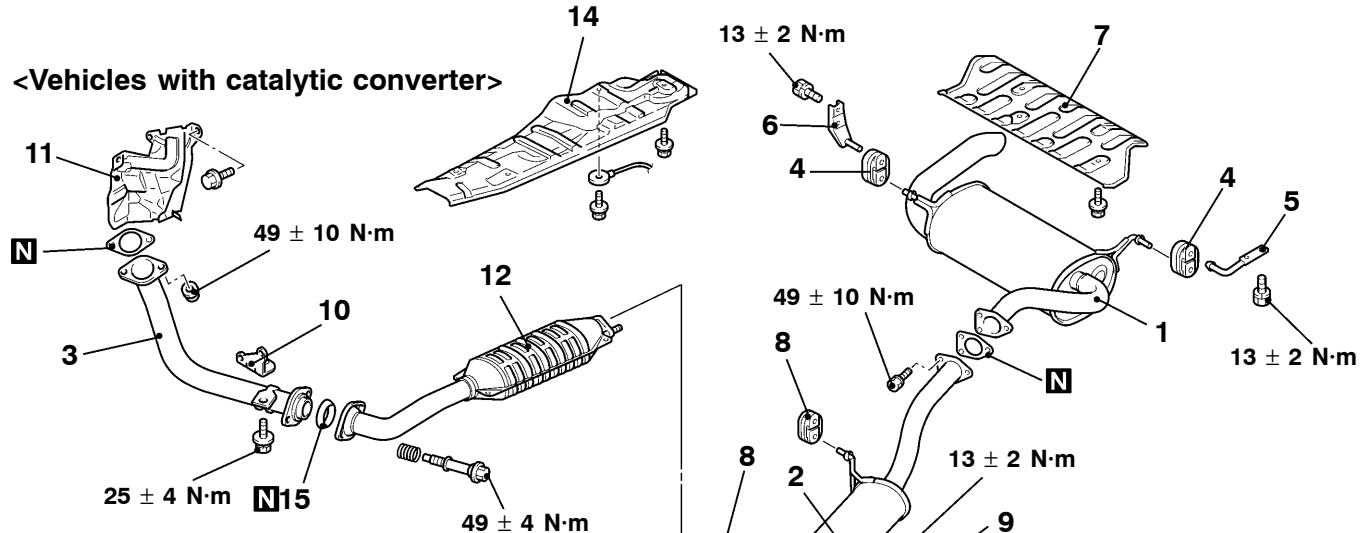
REMOVAL AND INSTALLATION

Pre-removal and Post-installation Operation

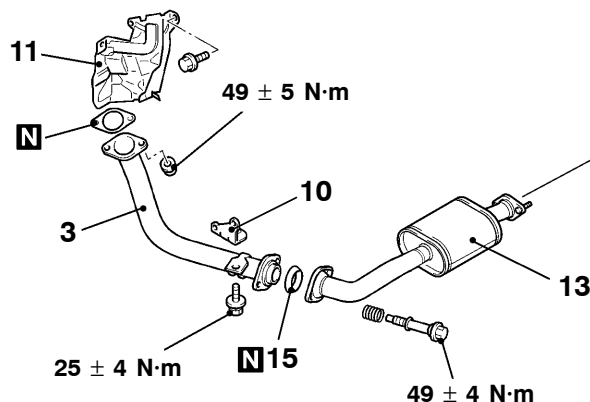
- Front Under Cover Removal and Installation

<Short wheelbase>

<Vehicles with catalytic converter>



<Vehicles without catalytic converter>



Exhaust main muffler and rear floor heat protector removal steps

1. Exhaust main muffler
4. Hanger
5. Hanger bracket
6. Hanger bracket
7. Rear floor heat protector
<Except 5M/T(GL)>

Center exhaust pipe removal steps

2. Center exhaust pipe
8. Hanger
9. Hanger bracket

Front exhaust pipe and dash heat protector removal steps

- Under cover
- 3. Front exhaust pipe
- 10. Exhaust support bracket
- 11. Dash heat protector

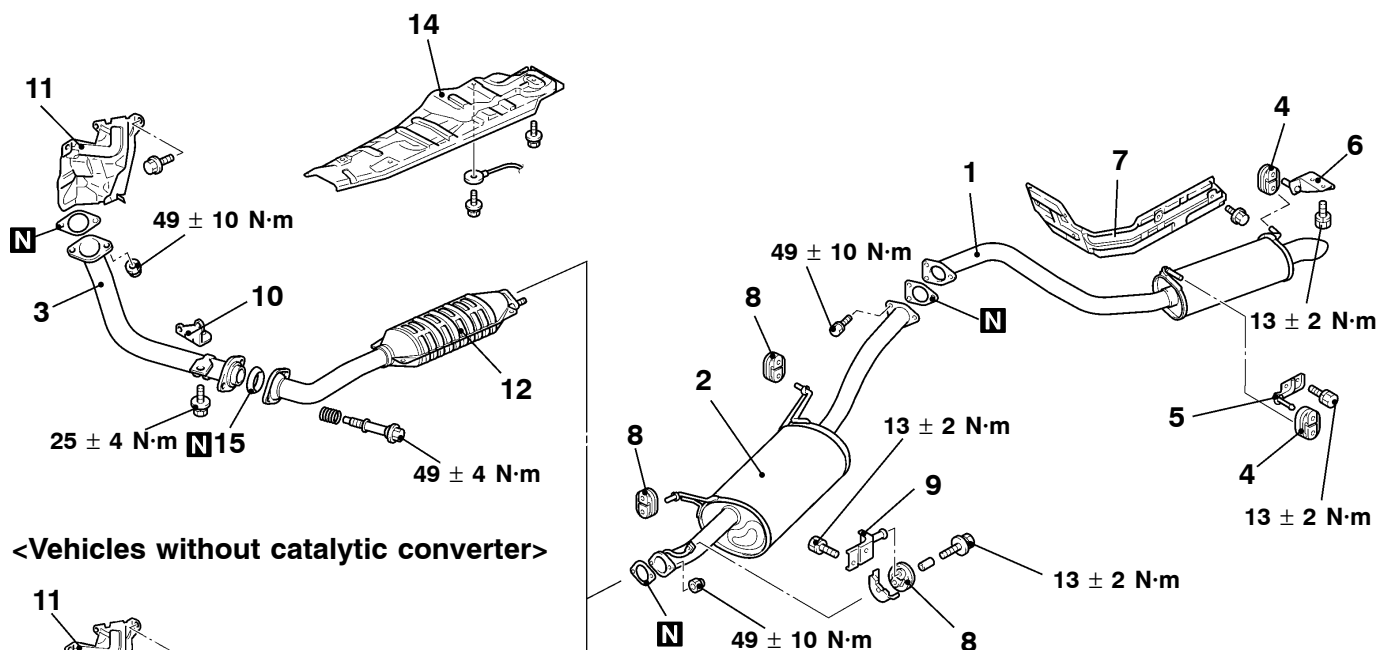
Front floor heat protector removal steps

12. Catalytic converter
13. Pre-muffler
14. Front floor heat protector
15. Seal ring

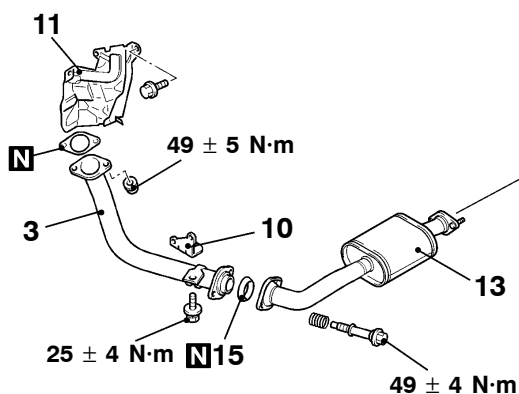
AY0160CA

<Long wheelbase>

<Vehicles with catalytic converter>



<Vehicles without catalytic converter>



AY0161CA

Tail exhaust pipe and rear floor heat protector removal steps

1. Tail exhaust pipe
4. Hanger
5. Hanger bracket
6. Hanger bracket
7. Rear floor heat protector
<Except 5M/T(GL)>

Exhaust main muffler removal steps

2. Exhaust main muffler
8. Hanger
9. Hanger bracket

Front exhaust pipe and dash heat protector removal steps

- Under cover
- 3. Front exhaust pipe
- 10. Exhaust support bracket
- 11. Dash heat protector

Front floor heat protector removal steps

12. Catalytic converter
13. Pre-muffler
14. Front floor heat protector