

GENERAL INFORMATION

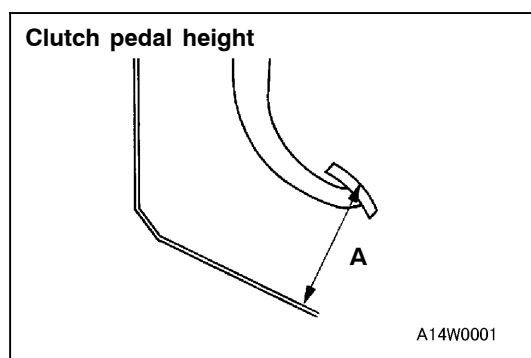
The clutch is a dry single-disc, diaphragm type; hydraulic pressure is used for the clutch control.

SERVICE SPECIFICATIONS

Items	Standard value
Clutch pedal height mm	202 – 205 <L.H. drive vehicles> 197 – 200 <R.H. drive vehicles>
Clutch pedal clevis pin play mm	1 – 3
Clutch pedal free play mm	6 – 13
Distance between the clutch pedal and the toeboard when the clutch is disengaged mm	75 or more <L.H. drive vehicles> 70 or more <R.H. drive vehicles>

LUBRICANTS

Items	Specified lubricants	Quantity
Clutch fluid	Brake fluid DOT3 or DOT4	As required
Push rod assembly	Rubber grease	
Release cylinder push rod	MITSUBISHI genuine grease Part No. 0101011	



ON-VEHICLE SERVICE

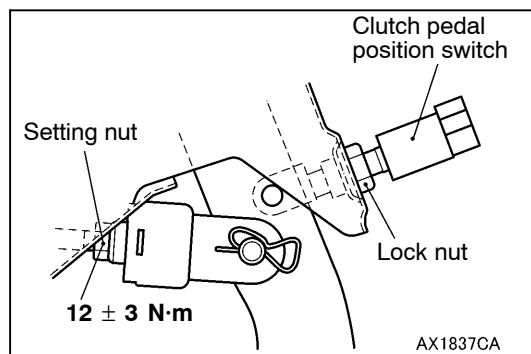
CLUTCH PEDAL INSPECTION AND ADJUSTMENT

1. Turn up the carpet, etc. under the clutch pedal.
2. Measure the clutch pedal height.

Standard value (A):

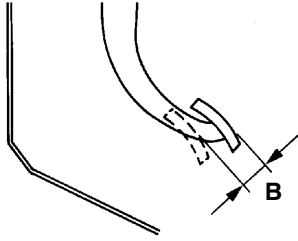
202 – 205 mm <L.H. drive vehicles>

197 – 200 mm <R.H. drive vehicles>



3. If the height of the clutch pedal is outside the standard value, loosen the setting nut or clutch pedal position switch lock nut <vehicles with auto-cruise control> to adjust the pedal height to the standard value.

Clutch pedal clevis pin play



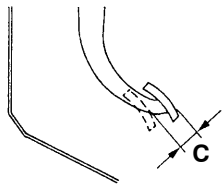
A14W0002

4. Measure the clutch pedal clevis pin play.
Standard value (B): 1 – 3 mm
5. If the clutch pedal play is not within the standard value, loosen the setting nut to adjust the play to the standard value.

Caution

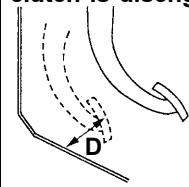
Do not push in the master cylinder push rod at this time, otherwise the clutch will not operate properly.

Clutch pedal free play



14W0002

Distance between the clutch pedal and the toeboard when the clutch is disengaged



14W0003

00005683

6. After completing the adjustments, confirm that the clutch pedal free play (measured at the face of the pedal pad) and the distance between the clutch pedal (the face of the pedal pad) and the toeboard when the clutch is disengaged are within the standard value ranges.

Standard value (C): 6 – 13 mm

Standard value (D):


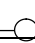
75 mm or more <L.H. drive vehicles>

70 mm or more <R.H. drive vehicles>

7. If the clutch pedal free play and the distance between the clutch pedal and the toeboard when the clutch is disengaged do not agree with the standard values, it is probably the result of either air in the hydraulic system or a faulty master cylinder, release cylinder or clutch. Bleed the air, or disassemble and inspect the master cylinder, release cylinder or clutch.
8. Turn back the carpet, etc.

CLUTCH PEDAL POSITION SWITCH CONTINUITY CHECK

1. Adjust the clutch pedal. (Refer to P.21-2.)
2. Depress the clutch pedal, and check the continuity between the terminals.

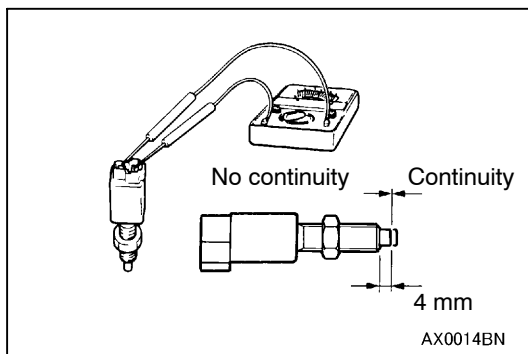
Measurement Conditions	Terminal No.	Terminal No.
	1 	2 
Clutch pedal depressed		
Clutch pedal not depressed		

BLEEDING

Specified fluid: Brake fluid DOT 3 or DOT 4

Caution

Use the specified brake fluid. Avoid using a mixture of the specified fluid and other fluid.



AX0014BN

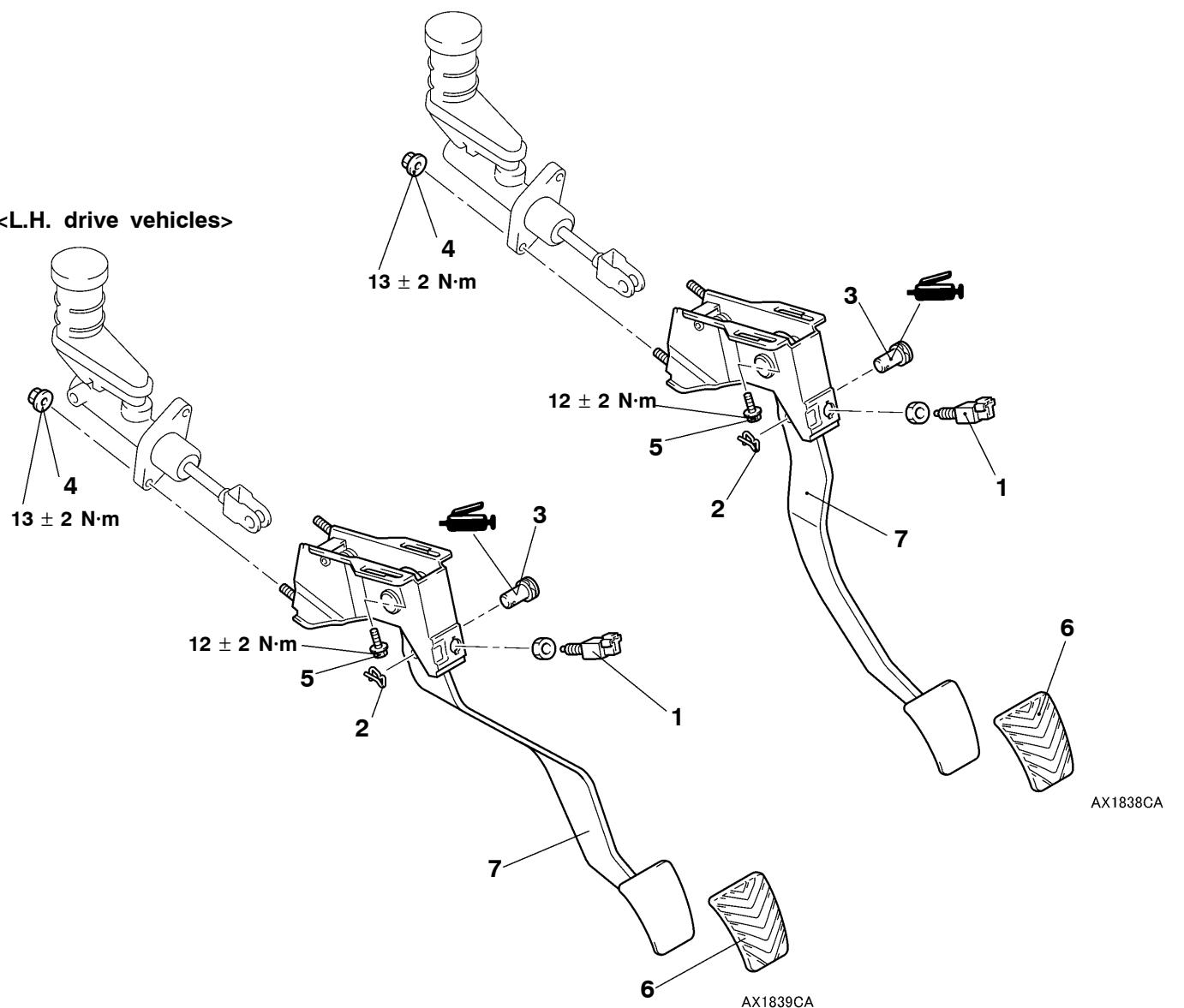
CLUTCH PEDAL

REMOVAL AND INSTALLATION

Post-installation Operation
Clutch Pedal Adjustment (Refer to P.21-2)

<R.H. drive vehicles>

<L.H. drive vehicles>



Removal steps

- Stay A (Refer to GROUP 52A – Instrument Panel)
- 1. Clutch pedal position switch
<vehicles with auto-cruise control>
- 2. Snap pin

- 3. Clevis pin
- 4. Clutch master cylinder mounting nut
- 5. Master cylinder member mounting bolt
- 6. Pedal pad
- 7. Clutch pedal assembly

CLUTCH CONTROL

REMOVAL AND INSTALLATION

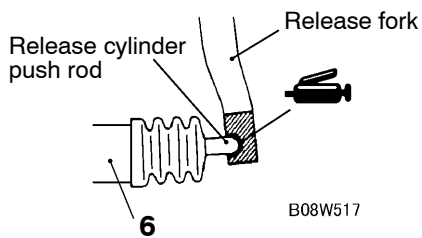
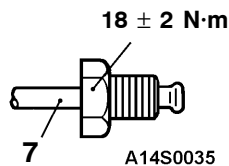
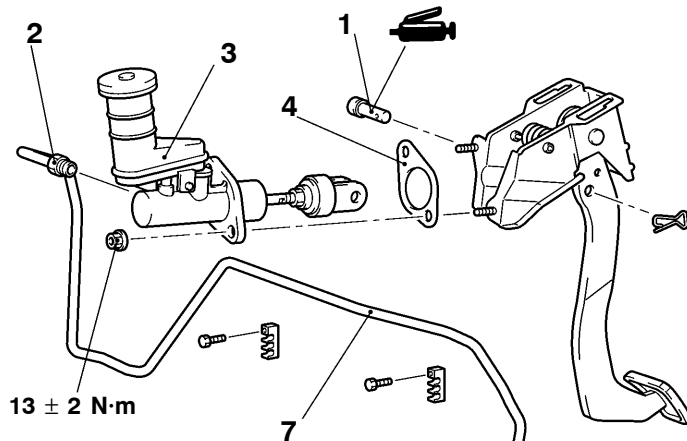
Pre-removal Operation

Clutch Fluid Draining

Post-installation Operation

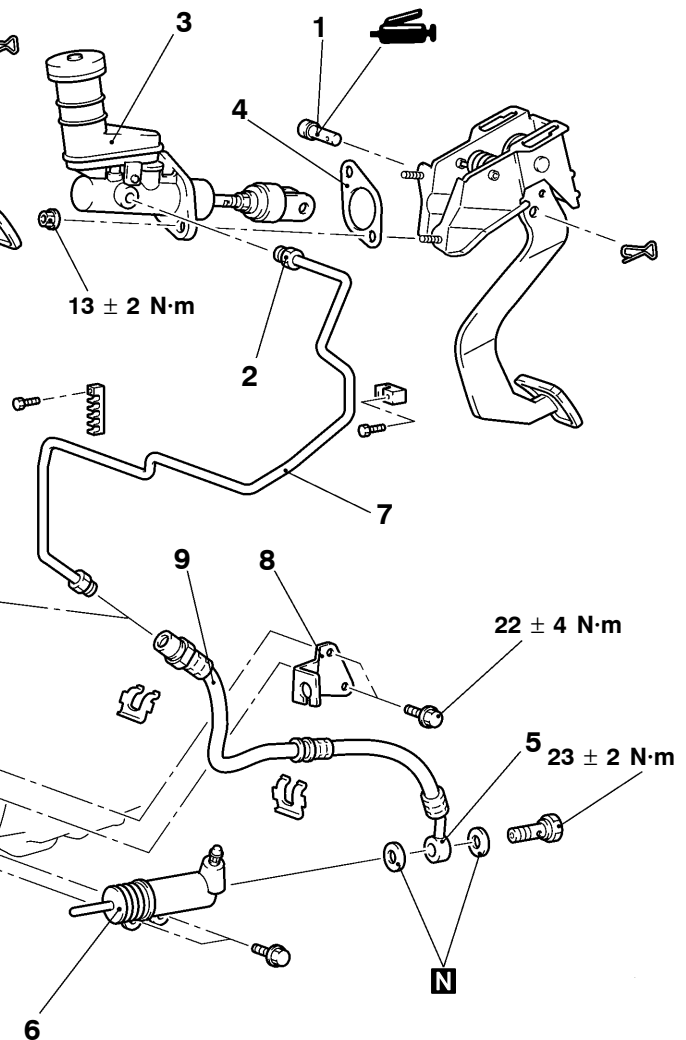
- Clutch Fluid Supplying
- Clutch Line Bleeding (Refer to P.21-3)
- Clutch Pedal Adjustment (Refer to P.21-2)

<6G74, 4M40>
<R.H. drive vehicles>



Specified grease:
MITSUBISHI genuine
grease Part No. 0101011

<L.H. drive vehicles>



AX1841CA

Clutch master cylinder assembly removal steps

1. Clevis pin
2. Clutch tube connection
3. Clutch master cylinder assembly
4. Sealer

Clutch release cylinder assembly removal steps

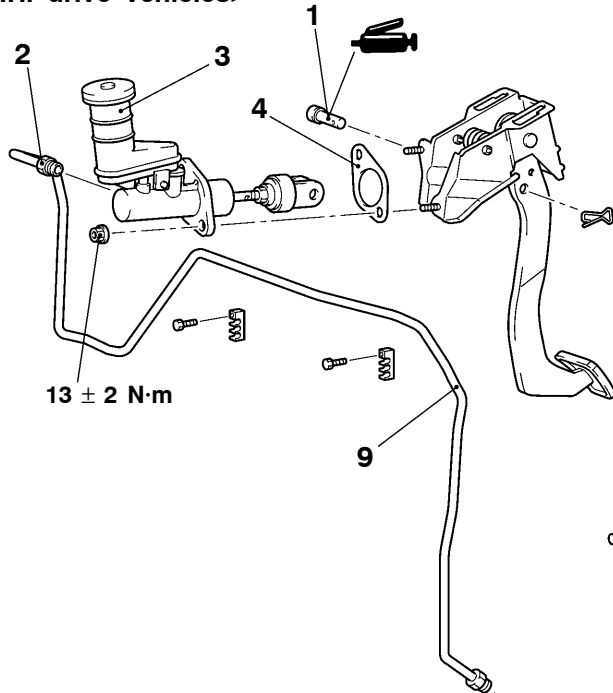
5. Clutch hose connection
6. Clutch release cylinder assembly

Clutch line removal steps

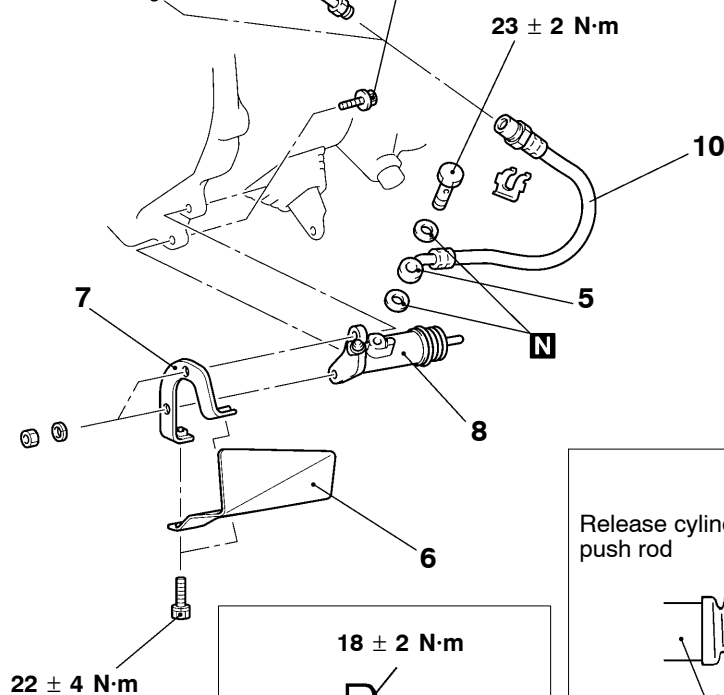
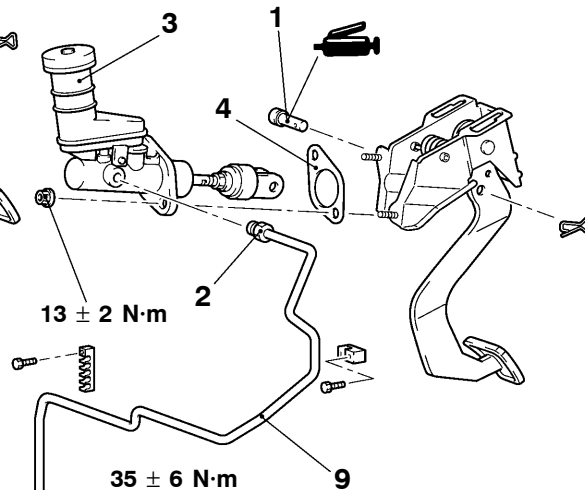
7. Clutch tube
8. Bracket
9. Clutch hose

<6G72>

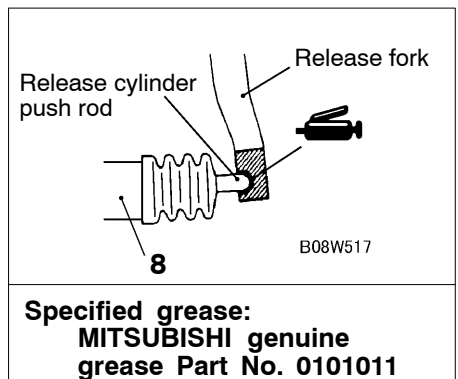
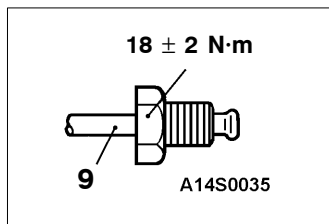
<R.H. drive vehicles>



<L.H. drive vehicles>



AY0252CA

**Clutch master cylinder assembly removal steps**

1. Clevis pin
2. Clutch tube connection
3. Clutch master cylinder assembly
4. Sealer

Clutch release cylinder assembly removal steps

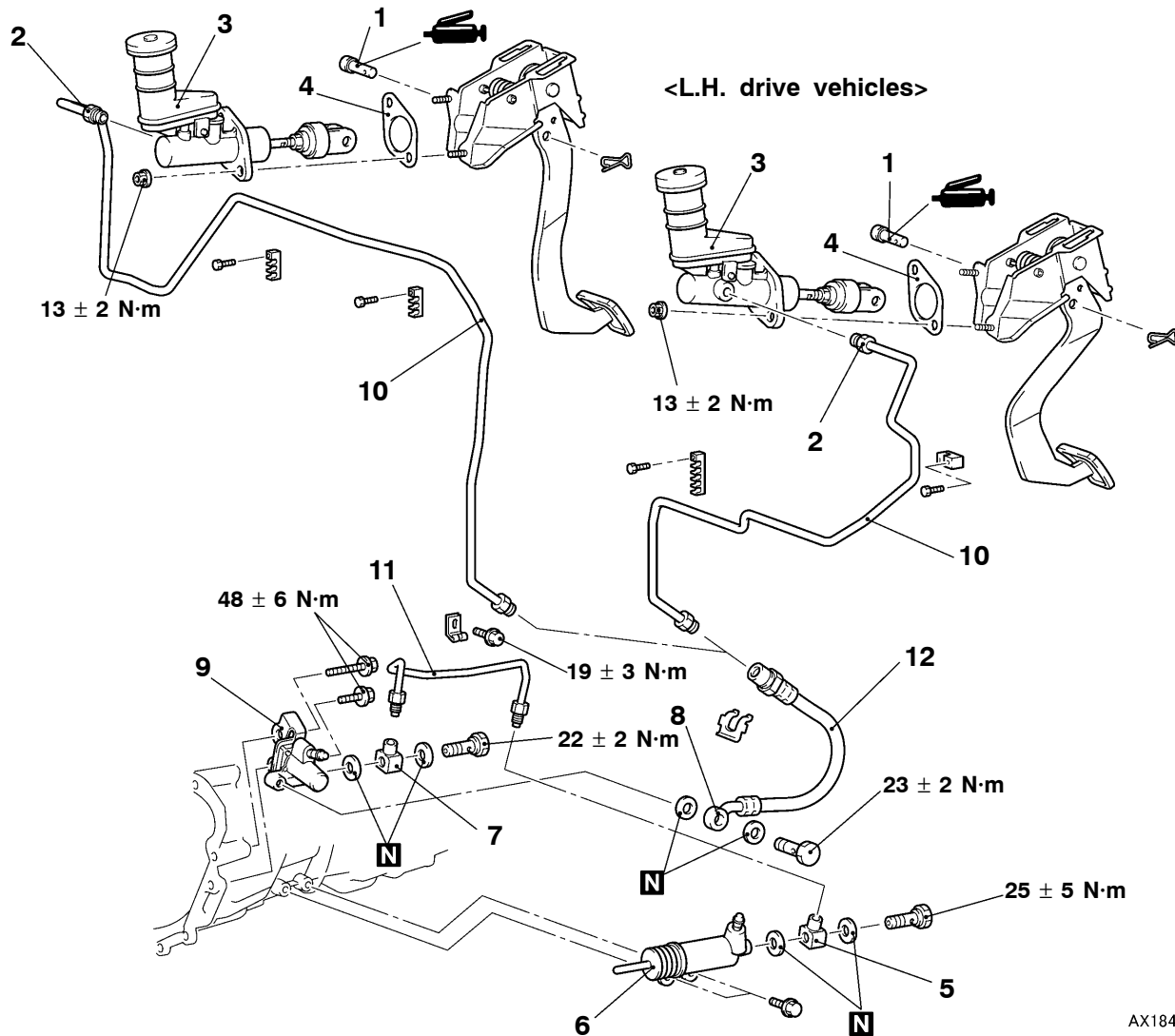
5. Clutch hose connection
6. Heat protector
7. Heat protector bracket
8. Clutch release cylinder assembly

Clutch line removal steps

9. Clutch tube
10. Clutch hose

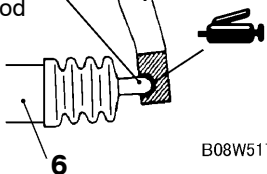
<4M41>

<R.H. drive vehicles>

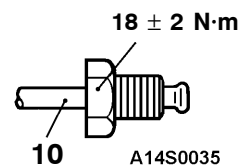
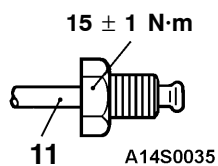


AX1843CA

Release cylinder
push rod



Specified grease:
MITSUBISHI genuine
grease Part No. 0101011



Clutch master cylinder assembly removal steps

1. Clevis pin
2. Clutch tube connection
3. Clutch master cylinder assembly
4. Sealer

Clutch release cylinder assembly removal steps

5. Union
6. Clutch release cylinder assembly

Clutch chamber assembly removal steps

7. Union
8. Clutch hose connection
9. Clutch chamber assembly

Clutch line removal steps

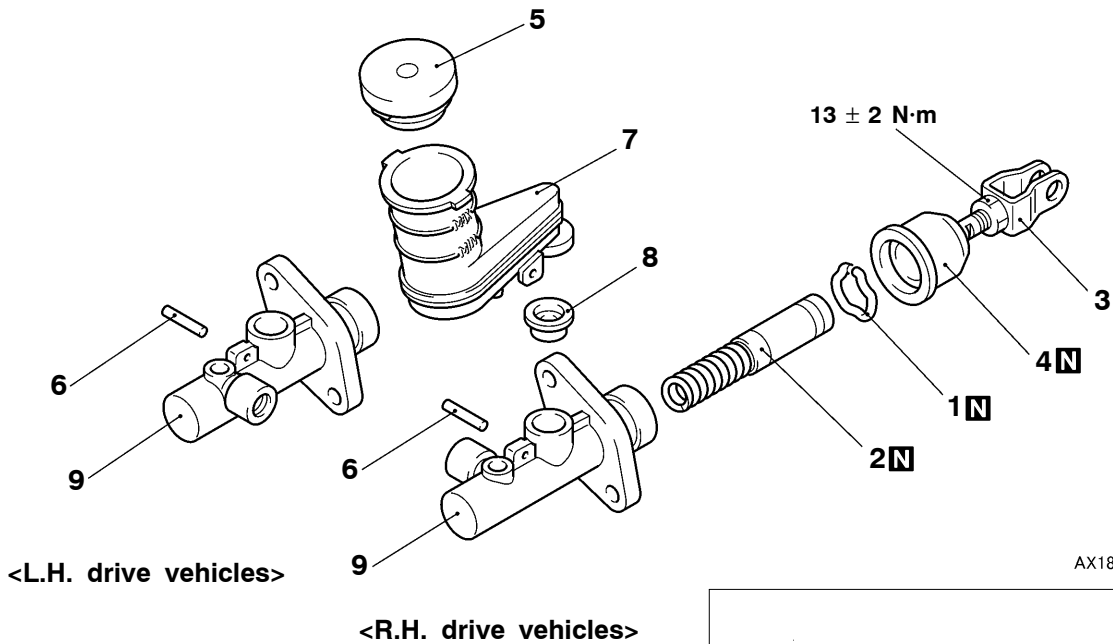
10. Clutch tube
11. Clutch tube
12. Clutch hose

DISASSEMBLY AND REASSEMBLY

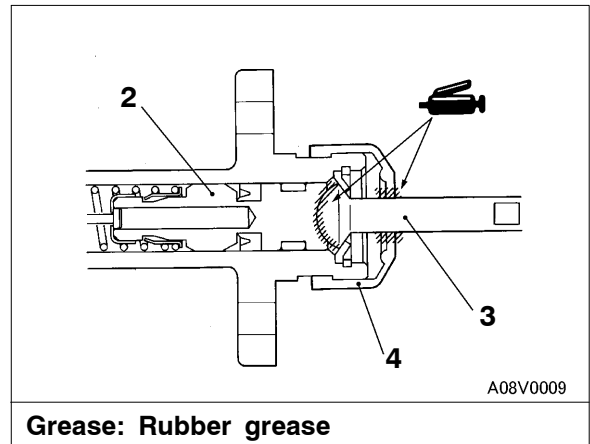
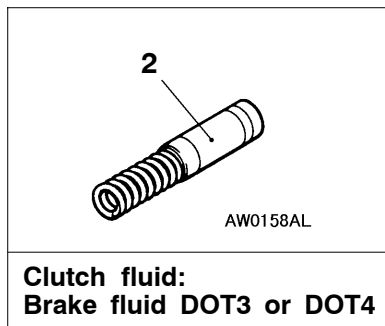
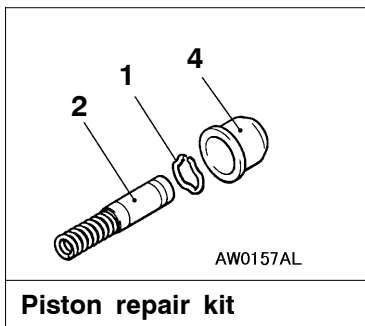
CLUTCH MASTER CYLINDER

Caution

Do not disassemble piston assembly.



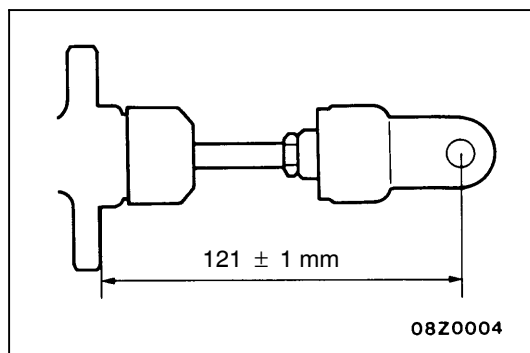
AX1840CA



Disassembly steps

- A◄
1. Piston stopper ring
 2. Piston assembly
 3. Push rod assembly
 4. Boot
 5. Reservoir cap

6. Spring pin
7. Reservoir tank
8. Seal
9. Master cylinder body



INSTALLATION SERVICE POINT

►A◄ PUSH ROD ASSEMBLY INSTALLATION

Set the length of the push rod assembly to the shown dimension to make the adjustment of clutch pedal easier.