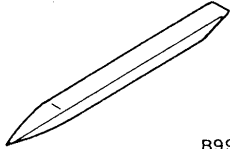


SERVICE SPECIFICATIONS

Items		Standard value	
		Sport seat	Except sport seat
Seat cushion heater resistance Ω (at cabin temperature of 20°C)	Between terminals 1 and 3	6.0 \pm 10%	5.0 \pm 10%
	Between terminals 2 and 3	6.4 \pm 10%	5.4 \pm 10%
Seatback heater resistance Ω (at cabin temperature of 20°C)	Between terminals 1 and 2	6.0 \pm 10%	6.0 \pm 10%

SPECIAL TOOL

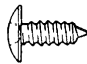
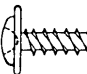
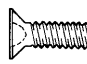
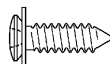
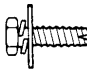

Tool	Number	Name	Use
 B990784	MB990784	Ornament remover	Removal of switch, trim, etc.

INSTRUMENT PANEL <L.H. DRIVE VEHICLES>**Caution**

For removal of instrument panel and the passenger's side air bag module, always observe the service procedures described in GROUP 52B – Air Bag Module and Clock Spring.

REMOVAL AND INSTALLATION

For installation of the instrument panel, the bolts and screws described below are used. They are indicated by symbols in the illustration.

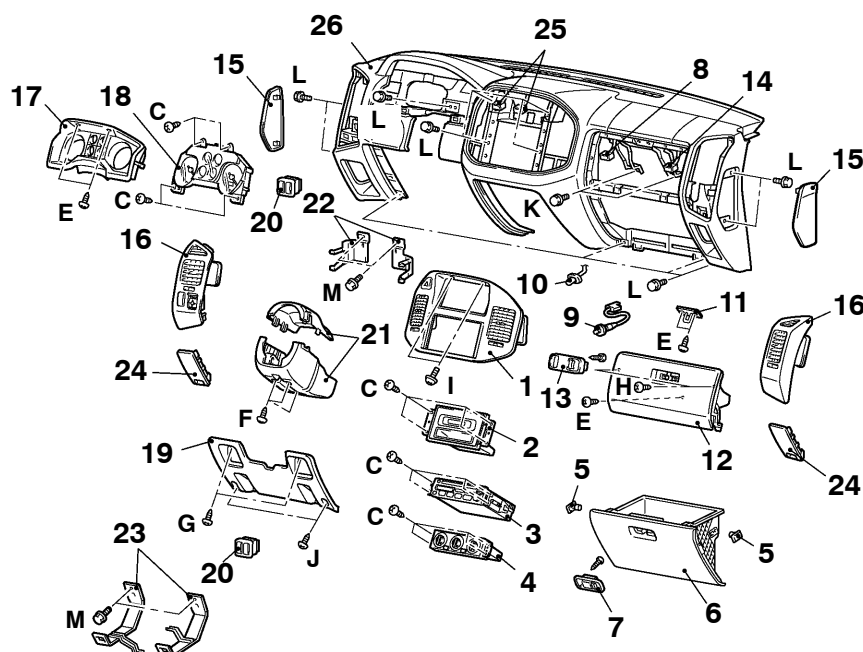
Name	Symbol	Size mm (D x L)	Colour	Shape
Tapping screw	A	5 x 10	–	 19Z0004
	B	5 x 12	–	
	C	5 x 16	–	 19Z0022
	D	5 x 16	–	
	E	5 x 16	Black	
	F	5 x 20	–	
	G	5 x 20	Black	 19Z0003
	H	5 x 16	Black	
Washer assembled screw	I	5 x 16	–	 X0010BY
Washer assembled bolt	J	5 x 20	Black	 19Z0005
	K	6 x 16	–	
	L	6 x 16	Black	
	M	6 x 20	–	 19Z0010

D = Thread diameter

L = Effective thread length

CAUTION: SRS

When removing and installing the instrument panel (vehicles equipped with SRS), do not let it bump against the SRS-ECU.

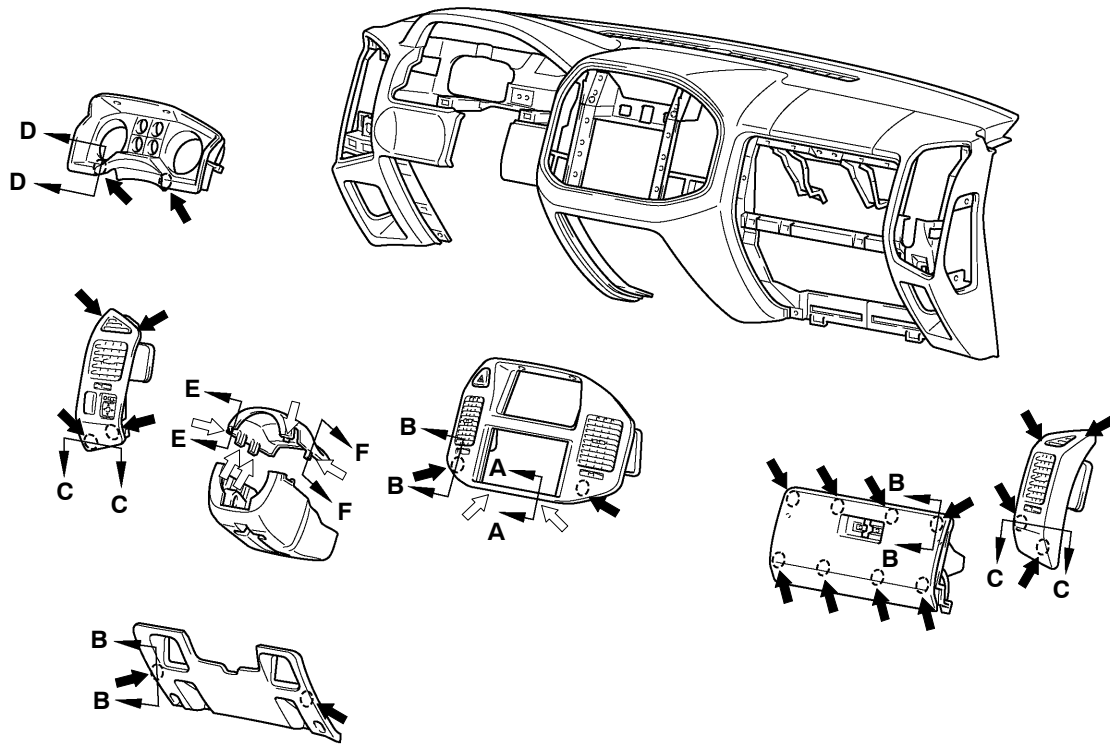


AY0154CA

Removal steps

- Rear floor console assembly (Refer to P.52A-12.)
- CD player unit (Refer to GROUP54A.)
- Front floor console (Refer to P.52A-12.)
- 1. Center panel assembly
- 2. RV meter
- 3. Radio and tape player
- 4. Manual air conditioner assembly
- 5. Glove box stopper
- 6. Glove box assembly
- 7. Glove box lock
- 8. Glove box lamp switch harness connector
- 9. Glove box lamp switch
- 10. Glove box lamp
- 11. Upper glove box striker
- 12. Upper glove box assembly
- 13. Upper glove box lid lock
- 14. Front passenger's side air bag module harness connector
- 15. Instrument panel side cover
- 16. Air outlet assembly
- 17. Meter bezel
- 18. Combination meter assembly
 - Hood opener lever (Refer to GROUP42.)
 - Fuel lid opener lever (Refer to GROUP42.)
- 19. Lower panel
- 20. Switch panel
- 21. Column cover
- 22. Stay A
 - Assist grip (Refer to P.52A-13, 15.)
 - Front pillar trim (Refer to P.52A-13, 15.)
- 23. Stay B
- 24. Corner lower panel
- 25. Photo sensor harness connector
 - Steering shaft assembly bolt (Refer to GROUP 37A.)
- 26. Instrument panel assembly

CLIP AND CLAW POSITION

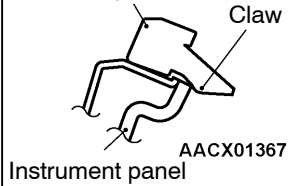


NOTE

AACX01533

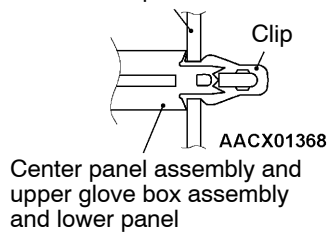
Section A – A

Center panel assembly

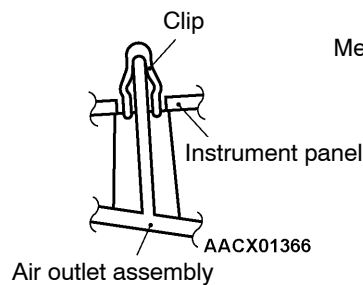


Section B – B

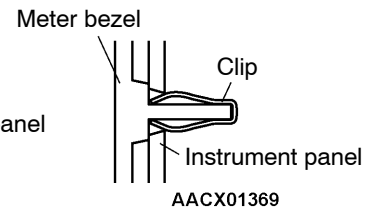
Instrument panel



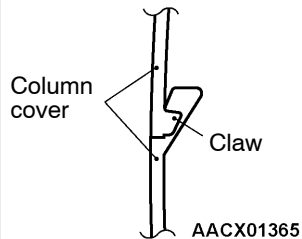
Section C – C



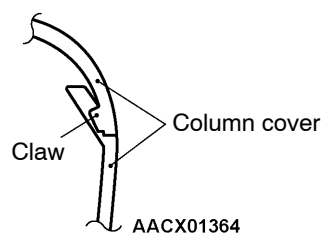
Section D – D



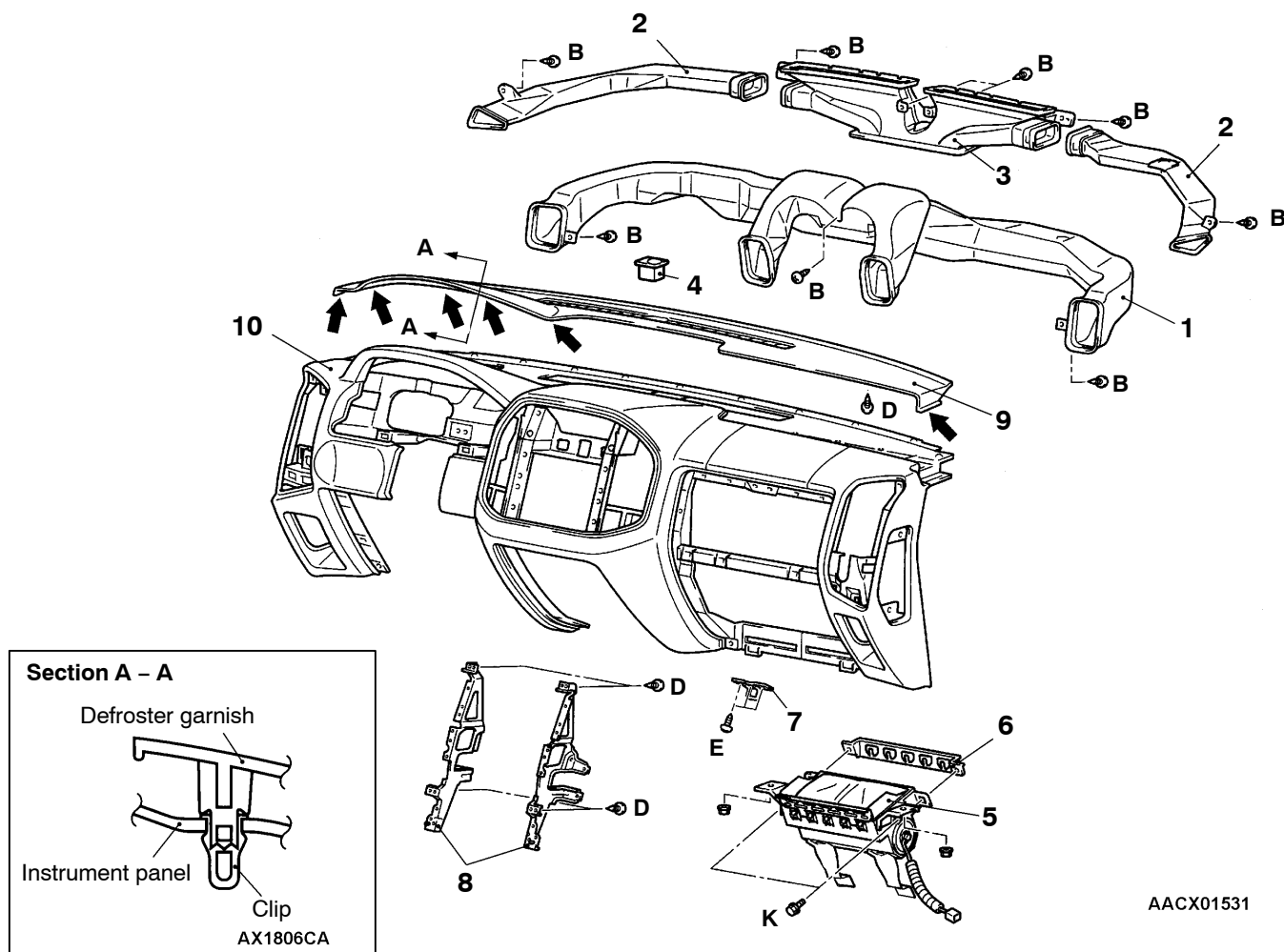
Section E – E



Section F – F



DISASSEMBLY AND REASSEMBLY



Disassembly steps

1. Distribution duct
2. Side defroster duct
3. Center defroster duct
4. Photo sensor
5. Front passenger's side air bag module

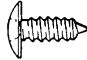
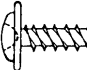
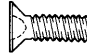
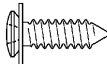
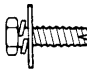

6. Air bag side plate
7. Glove box striker
8. Instrument panel center reinforcement
9. Defroster garnish
10. Instrument panel

INSTRUMENT PANEL <R.H. DRIVE VEHICLES>**Caution**

For removal of instrument panel and the passenger's side air bag module, always observe the service procedures described in GROUP 52B – Air Bag Module and Clock Spring.

REMOVAL AND INSTALLATION

For installation of the instrument panel, the bolts and screws described below are used. They are indicated by symbols in the illustration.

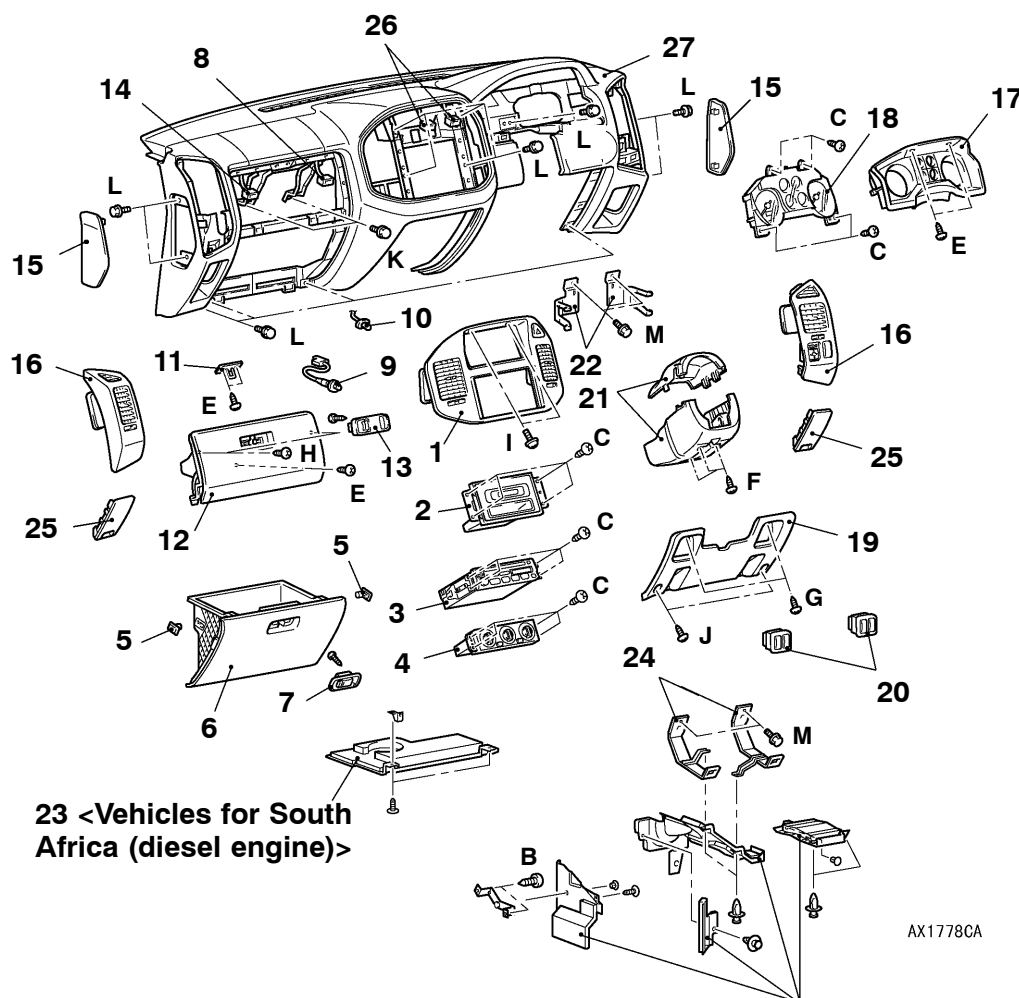
Name	Symbol	Size mm (D x L)	Colour	Shape
Tapping screw	A	5 x 10	–	 19Z0004
	B	5 x 12	–	
	C	5 x 16	–	 19Z0022
	D	5 x 16	–	
	E	5 x 16	Black	
	F	5 x 20	–	
	G	5 x 20	Black	
	H	5 x 16	Black	 19Z0003
Washer assembled screw	I	5 x 16	–	 X0010BY
Washer assembled bolt	J	5 x 20	Black	 19Z0005
	K	6 x 16	–	
	L	6 x 16	Black	
	M	6 x 20	–	 19Z0010

D = Thread diameter

L = Effective thread length

CAUTION: SRS

When removing and installing the instrument panel (vehicles equipped with SRS), do not let it bump against the SRS-ECU.



23 <Vehicles for South Africa (diesel engine)>

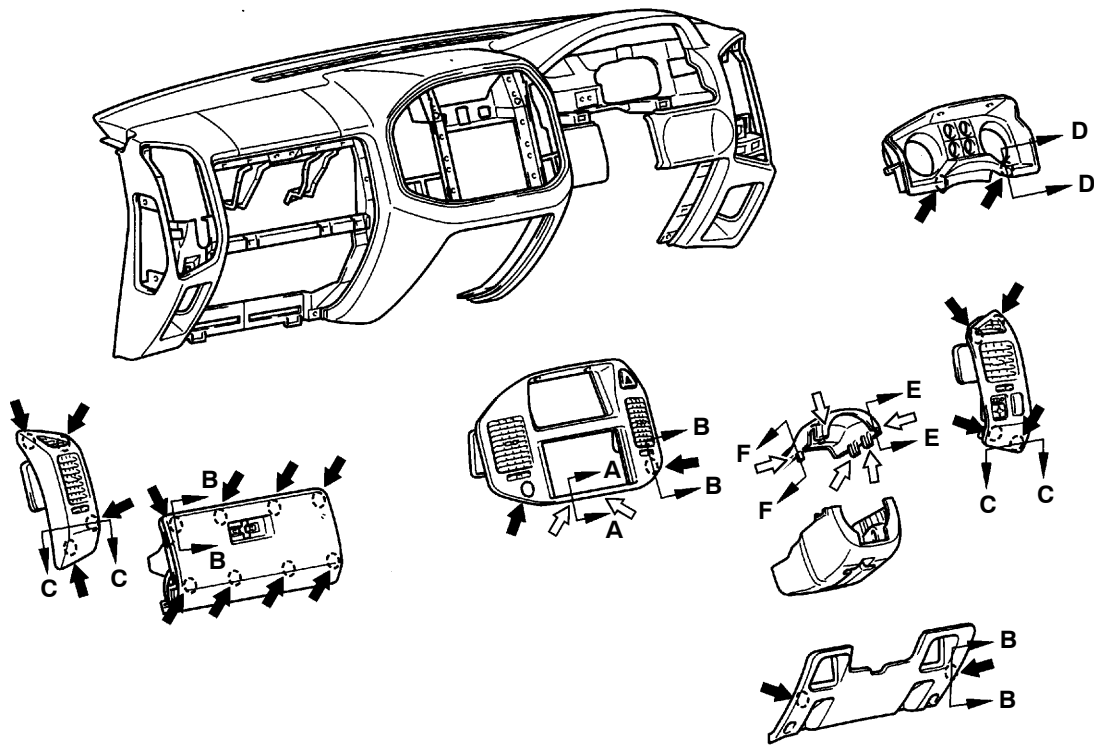
<Vehicles for South Africa (diesel engine)>23

AX1778CA

Removal steps

- Rear floor console assembly (Refer to P.52A-12.)
- CD player unit (Refer to GROUP 54A.)
- Front floor console (Refer to P.52A-12.)
- 1. Center panel assembly
- 2. Center display
- 3. Radio and tape player
- 4. Manual air conditioner assembly
- 5. Glove box stopper
- 6. Glove box assembly
- 7. Glove box lock
- 8. Glove box lamp switch harness connector
- 9. Glove box lamp switch
- 10. Glove box lamp
- 11. Upper glove box striker
- 12. Upper glove box assembly
- 13. Upper glove box lid lock
- 14. Front passenger's side air bag module harness connector
- 15. Instrument panel side cover
- 16. Air outlet assembly
- 17. Meter bezel
- 18. Combination meter assembly
 - Hood opener lever (Refer to GROUP 42.)
 - Fuel lid opener lever (Refer to GROUP 42.)
- 19. Lower panel
- 20. Switch panel
- 21. Column cover
- 22. Stay A
 - Assist grip (Refer to P.52A-13,15.)
 - Front pillar trim (Refer to P.52A-13,15.)
- 23. Under cover assembly
- 24. Stay B
- 25. Corner lower panel
- 26. Photo sensor harness connector
 - Steering shaft assembly bolt (Refer to GROUP 37A.)
- 27. Instrument panel assembly

CLIP AND CLAW POSITION

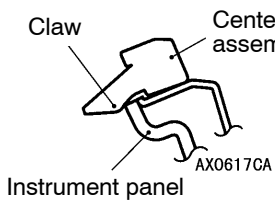


NOTE

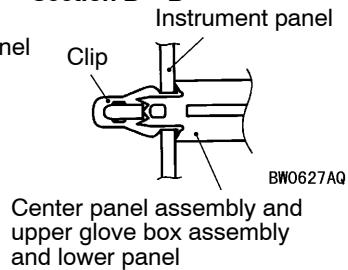
Clip position
 Clip position

AX0873CA

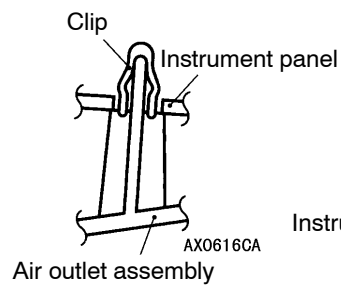
Section A – A



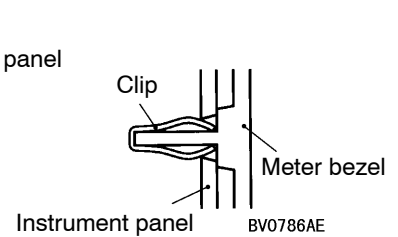
Section B – B



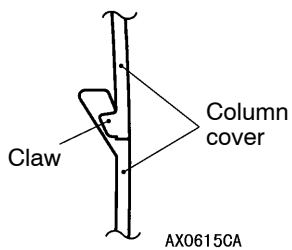
Section C – C



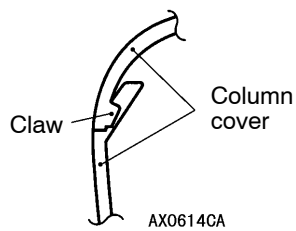
Section D – D



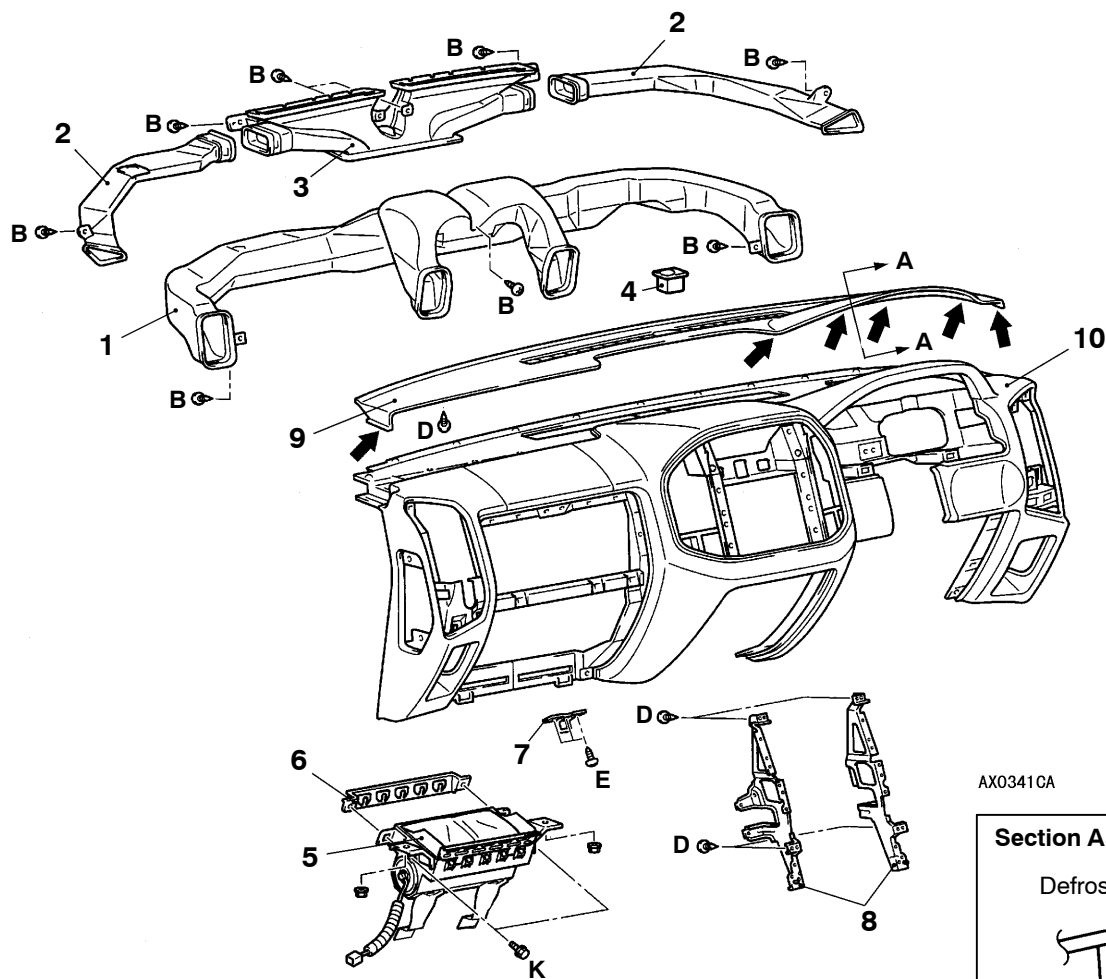
Section E – E



Section F – F



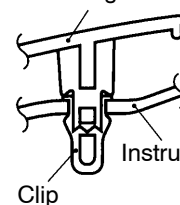
DISASSEMBLY AND REASSEMBLY



AX0341CA

Section A – A

Defroster garnish



Instrument panel

Clip

AX0613CA

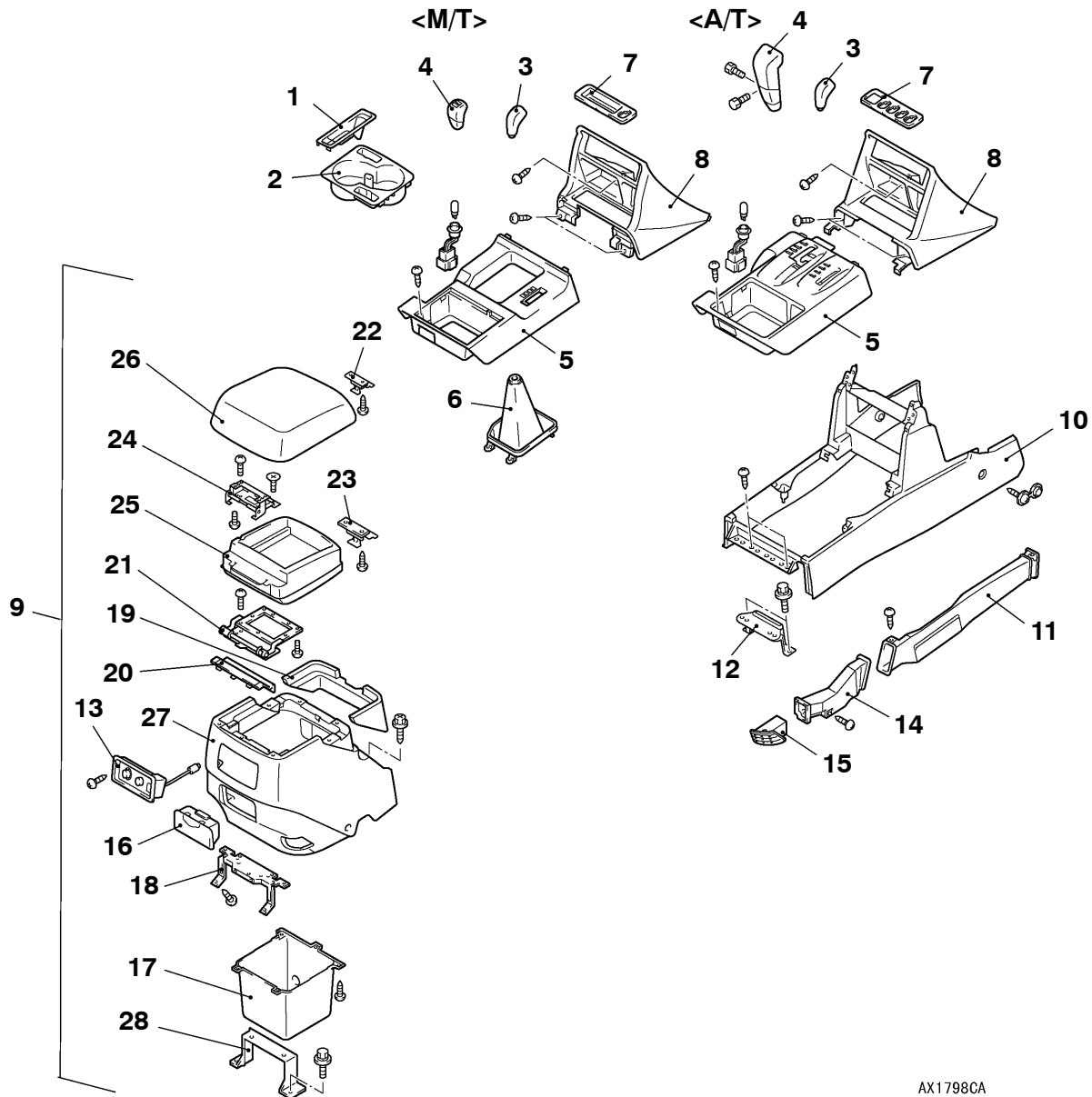
Disassembly steps

1. Distribution duct
2. Side defroster duct
3. Center defroster duct
4. Photo sensor
5. Front passenger's side air bag module

6. Air bag side plate
7. Glove box striker
8. Instrument panel center reinforcement
9. Defroster garnish
10. Instrument panel

FLOOR CONSOLE

REMOVAL AND INSTALLATION



AX1798CA

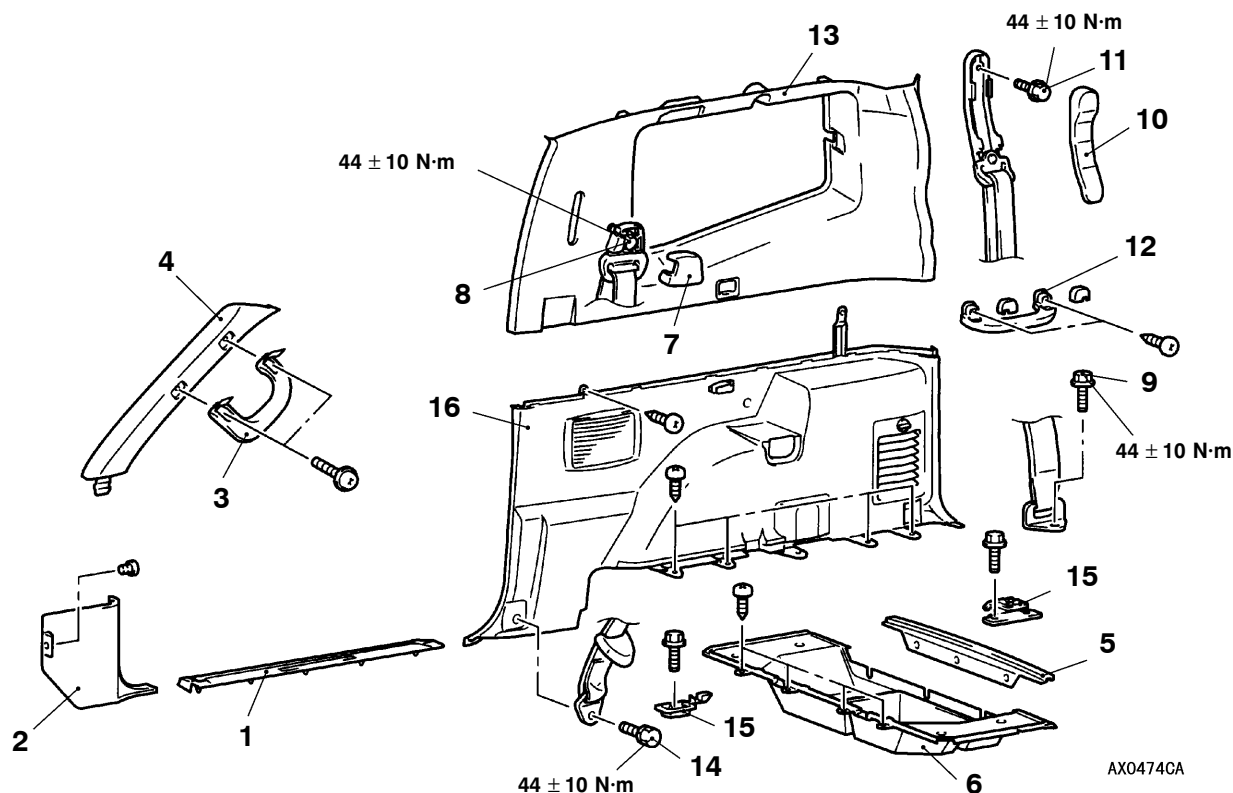
Removal steps

1. Parking brake lever cover
2. Cup holder
3. Transfer shift knob
4. Selector lever knob
5. Indicator panel
6. Shift lever cover
7. Switch panel
8. Lower center panel
- Parking brake lever mounting bolt
9. Rear floor console assembly
10. Front floor console
11. Rear heater duct A
12. Console bracket A
13. Rear control assembly
14. Rear heater duct B
15. Rear heater duct nozzle
16. Rear floor console ashtray
17. Rear floor console box
18. Rear floor console bracket
19. Rear floor console upper cover
20. Rear floor console hinge cover
21. Hinge bracket
22. Lock A
23. Lock B
24. Lid bracket
25. Lid box
26. Lid assembly
27. Rear floor console
28. Console bracket B

TRIMS

REMOVAL AND INSTALLATION

<Short Wheelbase>

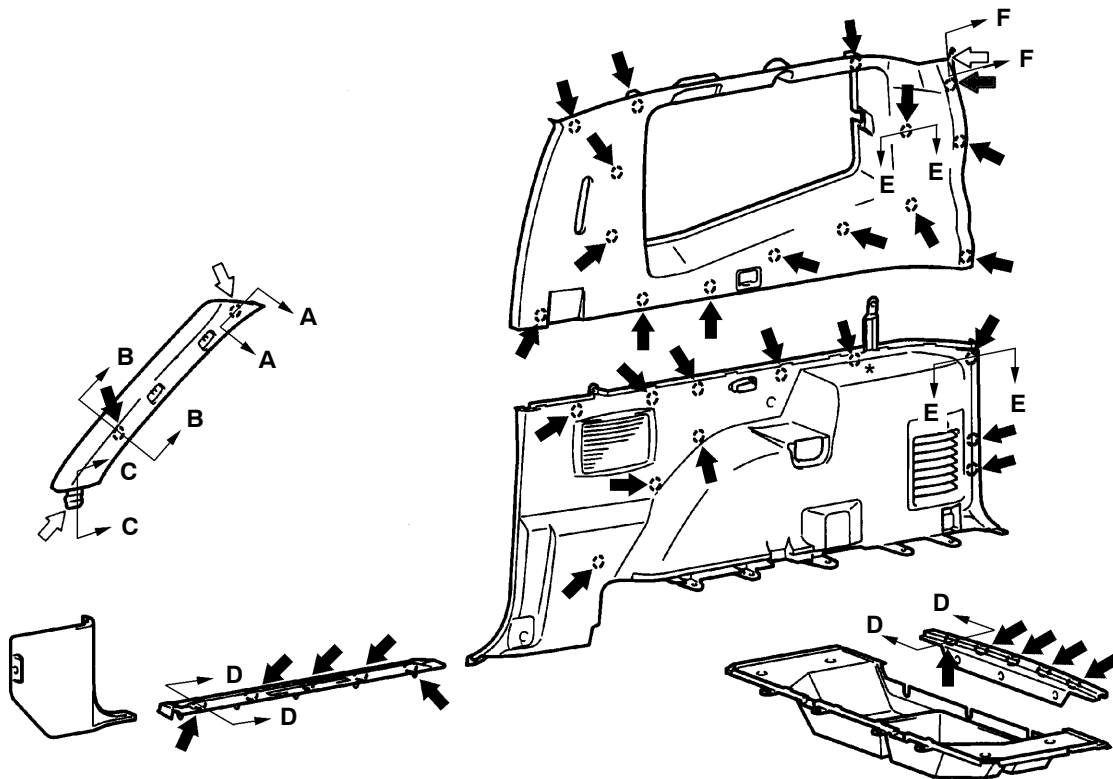


NOTE

For door trims, refer to GROUP 42.

- | | |
|-------------------------------|--------------------------------|
| 1. Front scuff plate | 9. Rear seat belt connection |
| 2. Cowl side trim | 10. Sash guide cover |
| 3. Assist grip | 11. Rear seat belt connection |
| 4. Front pillar trim | 12. Assist grip |
| 5. Back door scuff plate | 13. Quarter trim, upper |
| 6. Luggage floor box | 14. Front seat belt connection |
| 7. Sash guide cover | 15. Luggage hook |
| 8. Front seat belt connection | 16. Quarter trim, lower |

CLIP AND CLAW POSITION

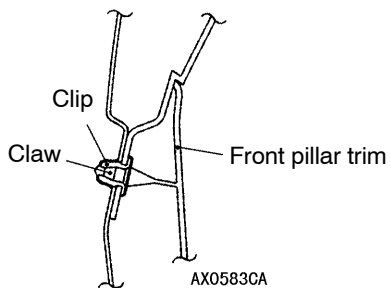


BX0476CA

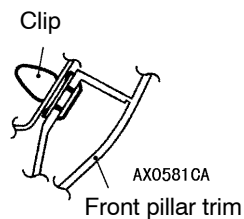
NOTE

◀: Clip position (*: R.H. side only)
 ◀◻: Claw position

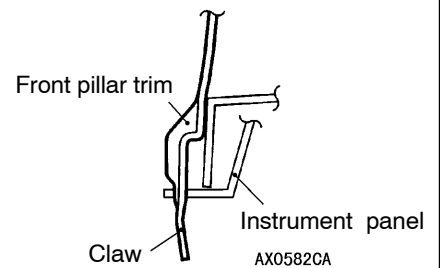
Section A – A



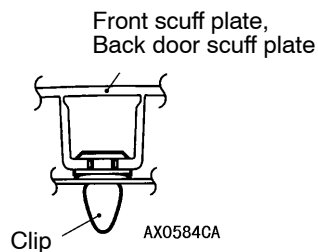
Section B – B



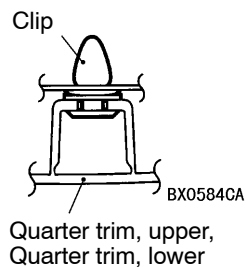
Section C – C



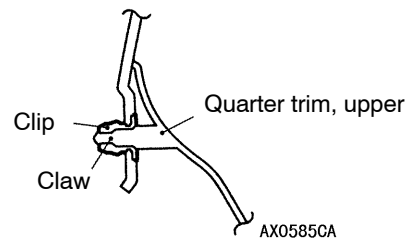
Section D – D



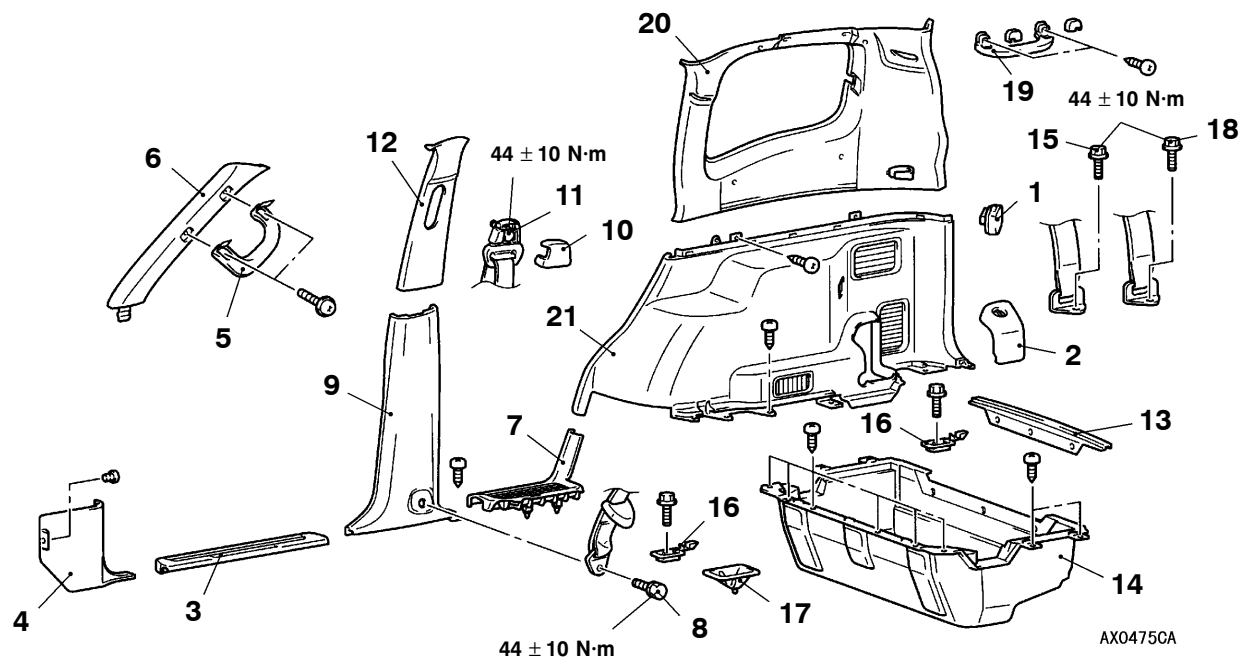
Section E – E



Section F – F



<Long Wheelbase>

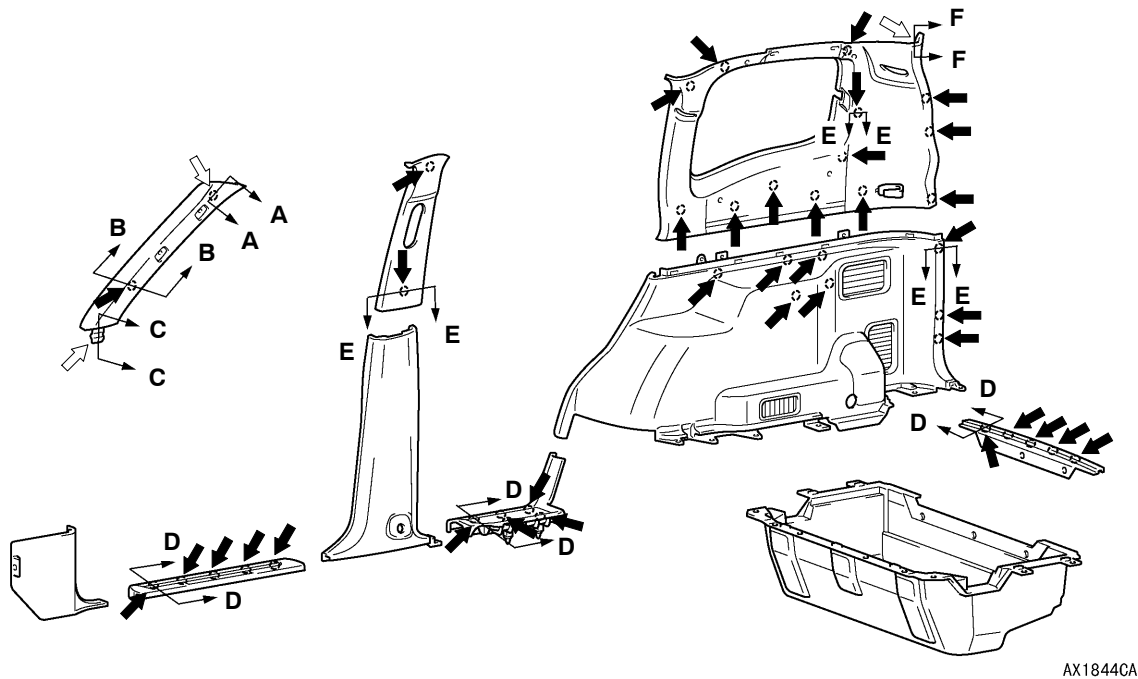


NOTE

For door trims, refer to GROUP 42.

- | | |
|--------------------------------|---------------------------------|
| 1. AC socket | 12. Center pillar trim, upper |
| 2. Quarter trim cover | 13. Back door scuff plate |
| ● Third seat assembly | 14. Luggage floor box |
| 3. Front scuff plate | 15. Second seat belt connection |
| 4. Cowl side trim | 16. Luggage hook |
| 5. Assist grip | 17. Striker cover |
| 6. Front pillar trim | 18. Third seat belt connection |
| 7. Rear scuff plate | 19. Assist grip |
| 8. Front seat belt connection | 20. Quarter trim, upper |
| 9. Center pillar trim, lower | <Vehicles with full trim> |
| 10. Sash guide cover | 21. Quarter trim, lower |
| 11. Front seat belt connection | <Vehicles with full trim> |

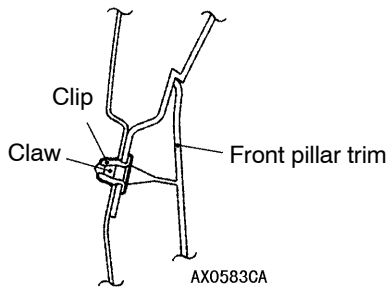
CLIP AND CLAW POSITION



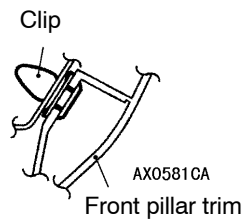
NOTE

: Clip position
 : Claw position

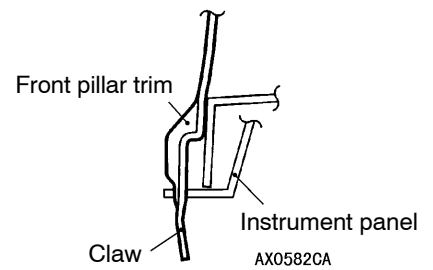
Section A – A



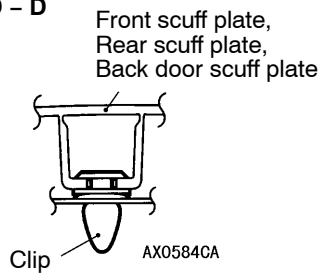
Section B – B



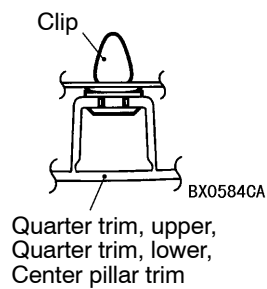
Section C – C



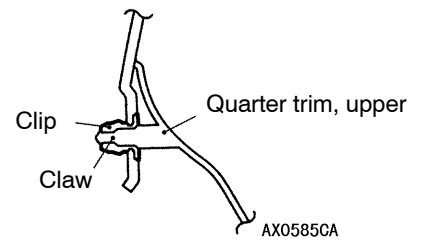
Section D – D

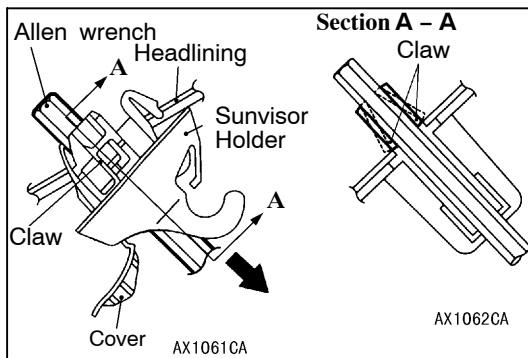


Section E – E



Section F – F





SUNVISOR HOLDER

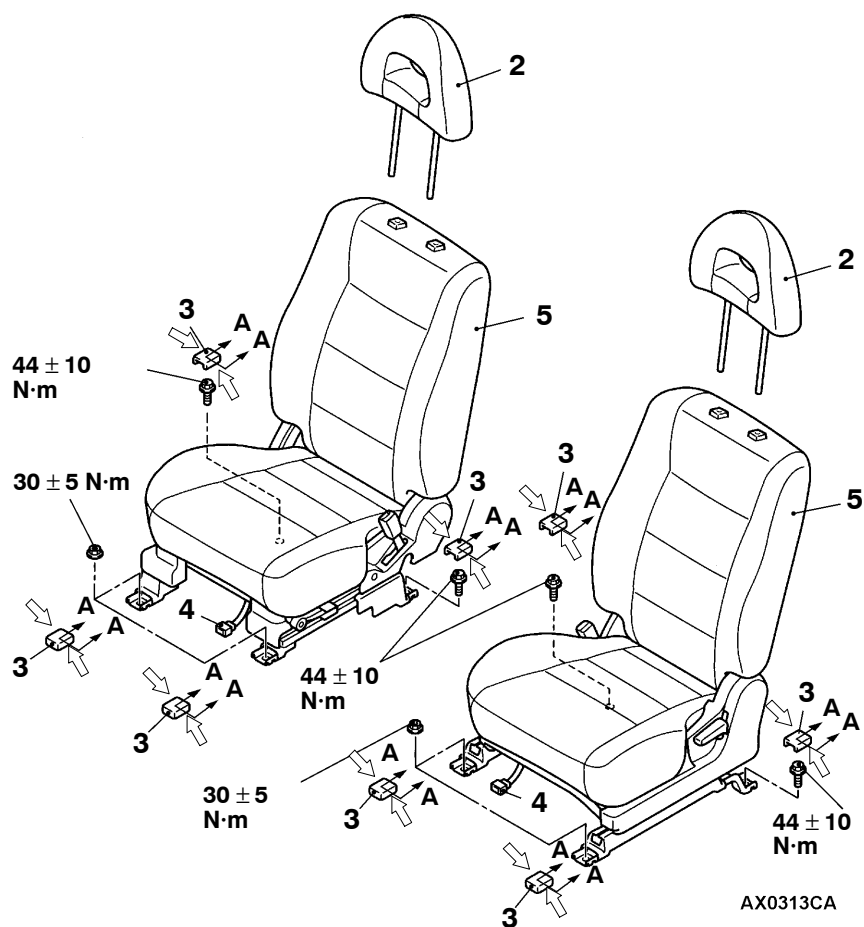
REMOVAL SERVICE POINT

SUNVISOR HOLDER REMOVAL

1. Remove the sunvisor holder cover, insert a 6 mm-Allen wrench to disengage the sunvisor holder side claws.
2. Pull out the sunvisor into the shown direction to remove the sunvisor holder.

FRONT SEAT

REMOVAL AND INSTALLATION

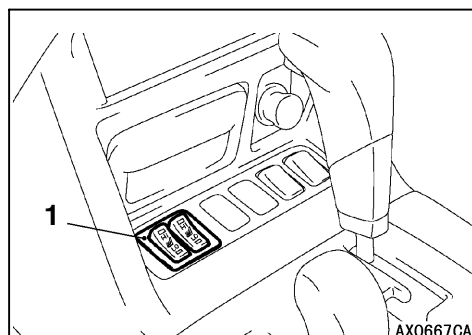
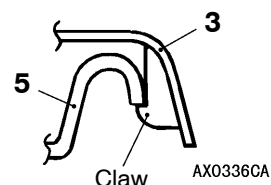


NOTE:

↔ marks show claw positions.

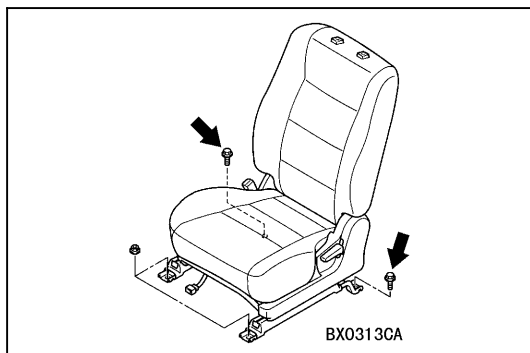
- 1. Heated seat switch
- 2. Headrestraint

Section A – A



Front seat assembly removal steps

- 3. Front seat anchor cover
- 4. Harness connector
- 5. Front seat assembly



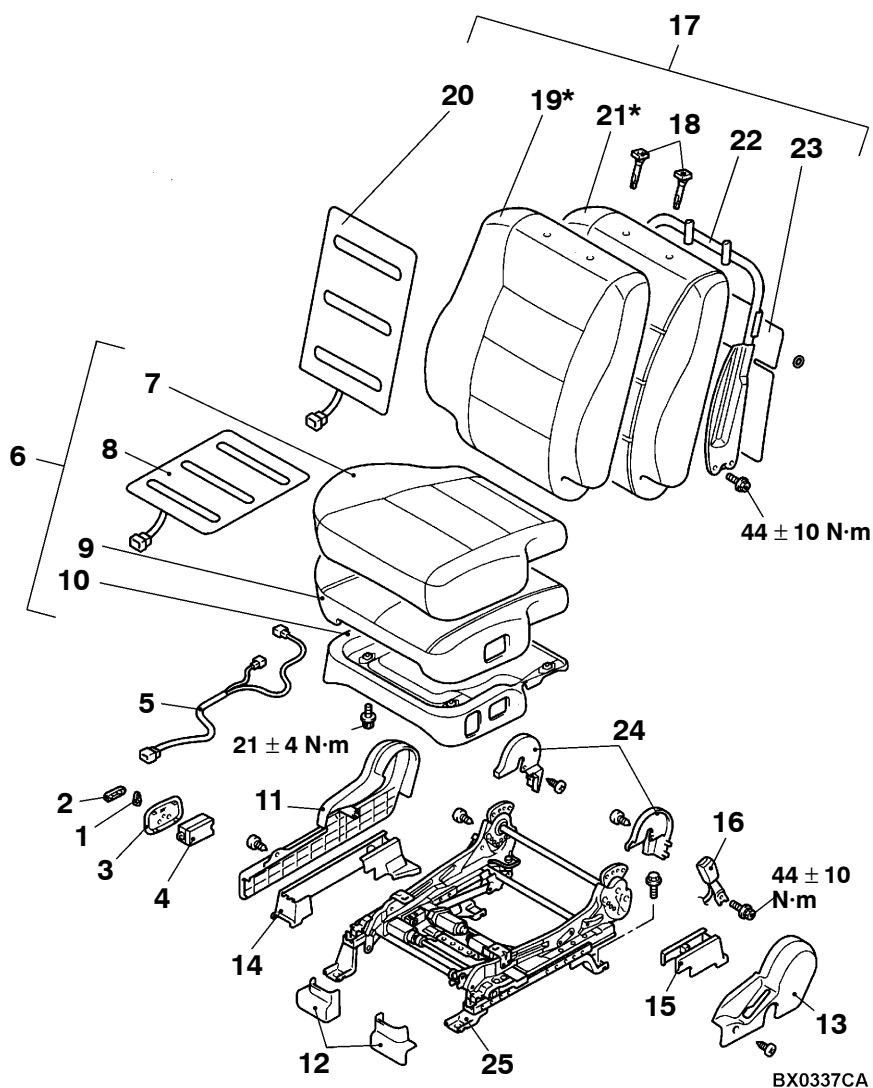
INSTALLATION SERVICE POINT

▶◀FRONT SEAT ASSEMBLY INSTALLATION

First install all of the front seat assembly mounting nuts and bolts, and then tighten them to the specified torque. The shown bolts should be tightened with no load applied to the front seat cushion.

DISASSEMBLY AND REASSEMBLY

<Power seat>



NOTE

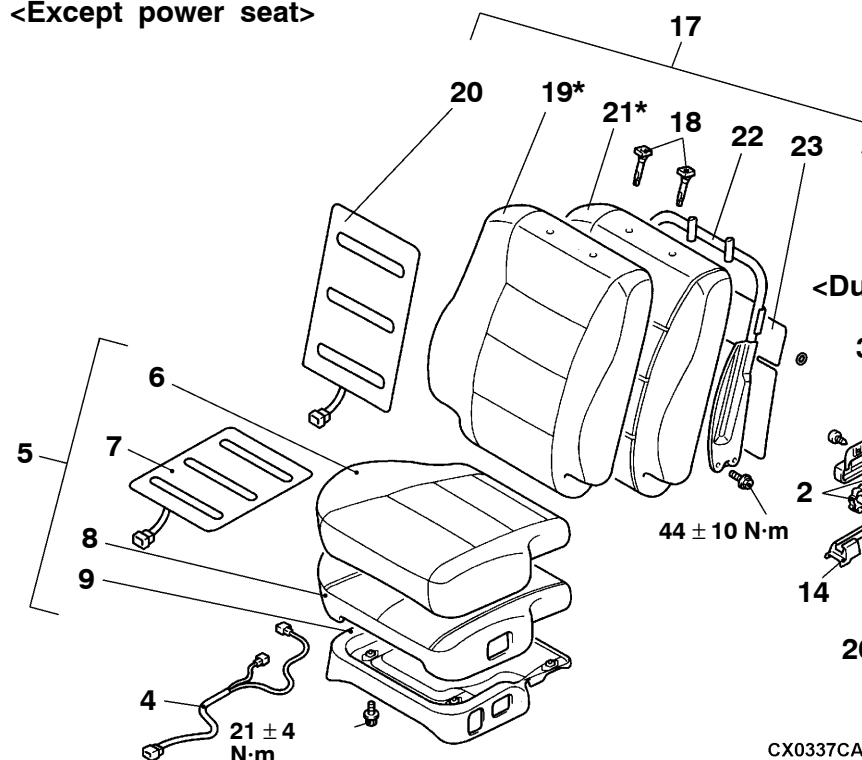
*: For the sport seat, the seat cover and pad are non-separable.

Disassembly steps

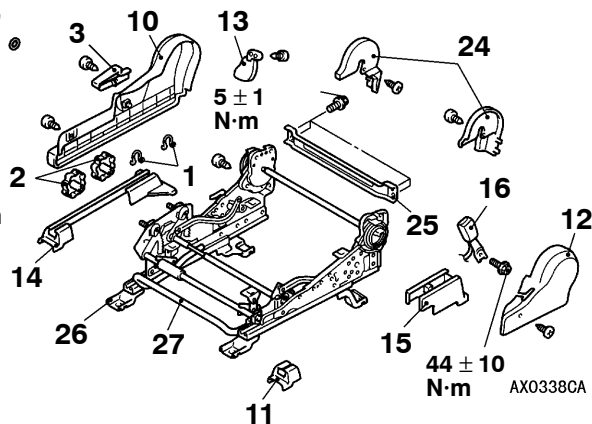
- | | |
|--------------------------------|--|
| 1. Reclining adjuster knob | 14. Seat slide adjuster side cover |
| 2. Slide adjuster knob | 15. Seat slide adjuster inner side cover |
| 3. Power seat switch garnish | 16. Inner seat belt |
| 4. Power seat switch | 17. Front seat back assembly |
| 5. Harness clamp | 18. Headrest guide |
| 6. Front seat cushion assembly | 19. Front seatback cover |
| 7. Front seat cushion cover | 20. Front seatback heater |
| 8. Front seat cushion heater | 21. Front seatback pad |
| 9. Front seat cushion pad | 22. Front seatback frame |
| 10. Front seat cushion frame | <Vehicles without side air bag> |
| 11. Side shield cover | 23. Front seatback board |
| 12. Front rail cover | 24. Reclining adjuster lower cover |
| 13. Hinge cover | 25. Seat slide adjuster |



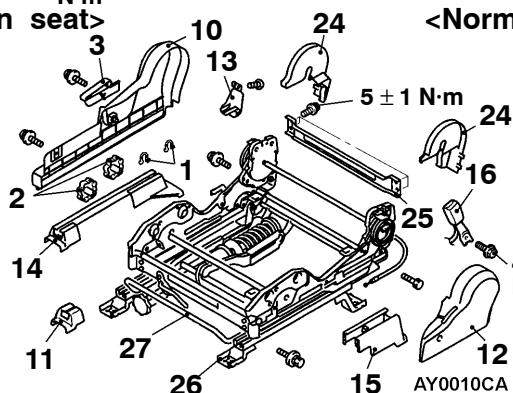
<Except power seat>



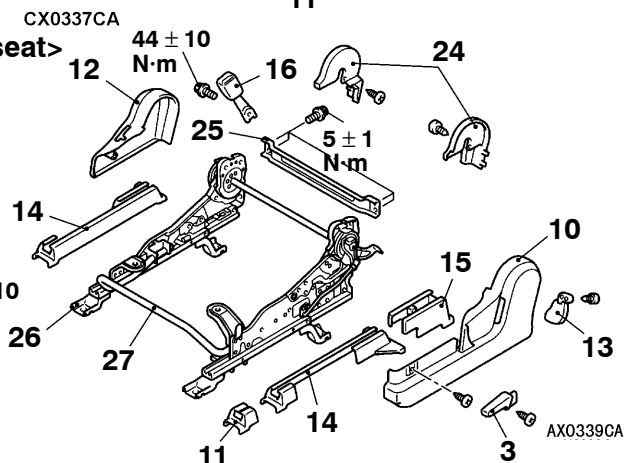
<Dual height adjuster seat>



<Suspension seat>



<Normal seat>



NOTE

*: For the sport seat, the seat cover and pad are non-separable.

Disassembly steps

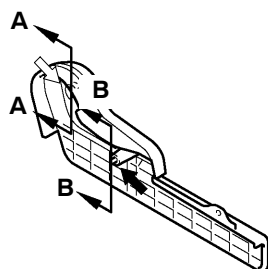
1. Clip<Vehicles with Suspension seat and dual height adjuster seat>
2. Height adjuster knob<Vehicles with Suspension seat and dual height adjuster seat>
3. Reclining adjuster lever
4. Harness clamp
5. Front seat cushion assembly
6. Front seat cushion cover
7. Front seat cushion heater
8. Front seat cushion pad
9. Front seat cushion frame
10. Side shield cover
11. Front rail cover
12. Hinge cover
13. Rear rail cover



14. Seat slide adjuster side cover
15. Seat slide adjuster inner side cover
16. Inner seat belt
17. Front seat back assembly
18. Headrest guide
19. Front seatback cover
20. Front seatback heater
21. Front seatback pad
22. Front seatback frame
- <Vehicles without side air bag>
23. Front seat back board
24. Reclining adjuster lower cover
25. Front seat frame
26. Seat slide adjuster
27. Seat slide adjuster lever

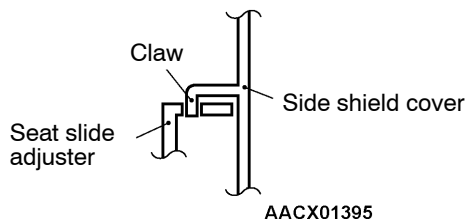
CLIP AND CLAW POSITION

<Side shield cover>



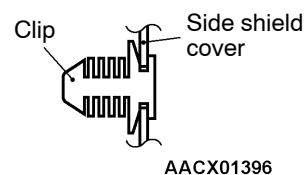
ACX01394

Section A – A



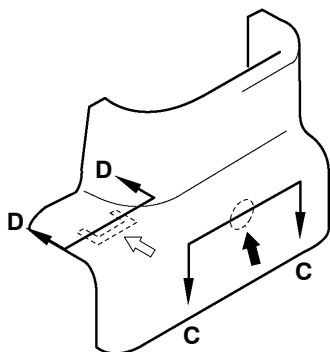
AACX01395

Section B – B



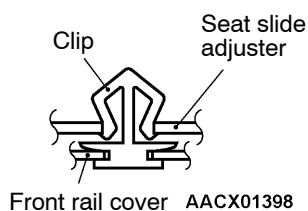
AACX01396

<Front rail cover>



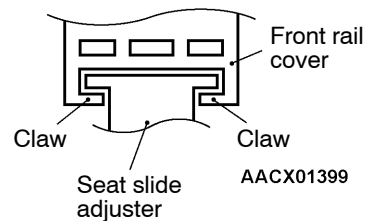
ACX01397

Section C – C



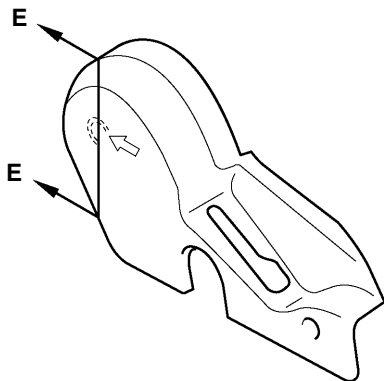
AACX01398

Section D – D



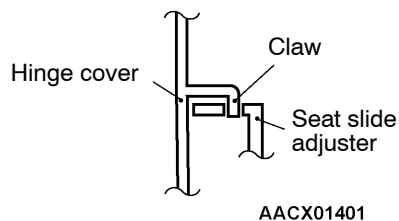
AACX01399

<Hinge cover>



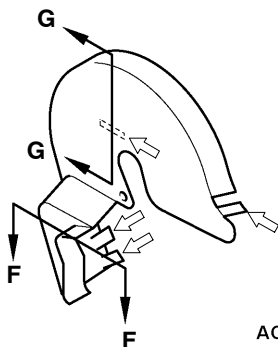
ACX01400

Section E – E



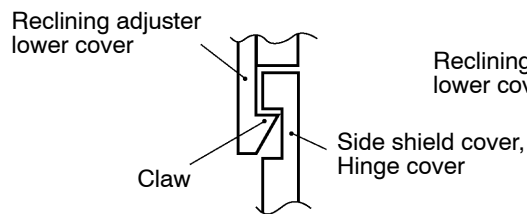
AACX01401

<Reclining adjuster lower cover>



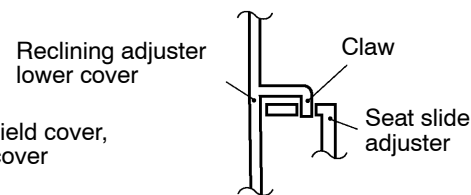
ACX01402

Section F – F



AACX01403

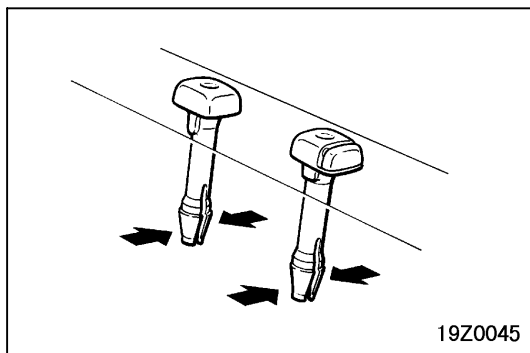
Section G – G



AACX01401

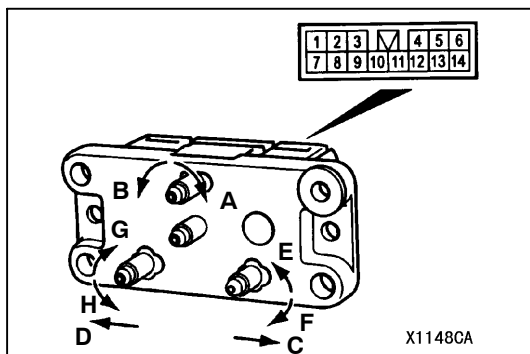
NOTE

- ◀ : Clip position
- ◀ : Claw position



REMOVAL SERVICE POINT

◀A▶ HEADRESTRAINT GUIDE REMOVAL

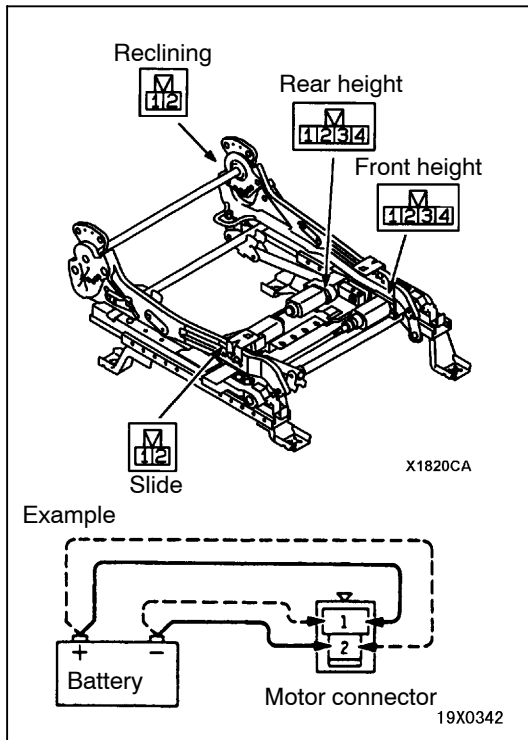


INSPECTION

POWER SEAT MANUAL SWITCH CONTINUITY CHECK

<Vehicles for Hong Kong>

Switch position			Terminal No.									
			1	2	3	4	5	6	7	8	13	14
Reclining switch	Front	A			○	○					○	○
	Rear	B			○	○					○	○
Slide switch	Front	C							○	○	○	○
	Rear	D							○	○	○	○
Front height switch	Up	E	○	○							○	○
	Down	F	○	○							○	○
Rear height switch	Up	G					○	○			○	○
	Down	H					○	○			○	○

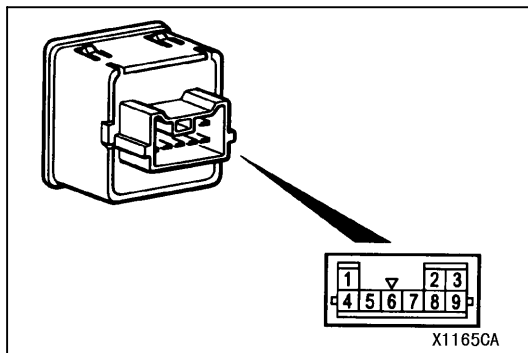


POWER SEAT SWITCH FUNCTION CHECK

1. Disconnect the motor connectors.
2. When the battery voltage is applied to the motor terminals, each motor should run smoothly and the seat adjusting mechanism should meet the table below.

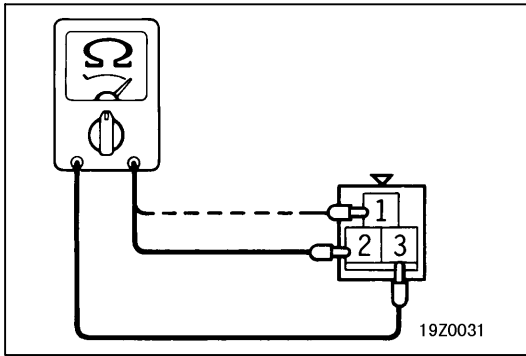
Motor name	Function direction	Terminal No.				Stop position
		1	2	3	4	
Front height	Down	⊕	⊖	–	–	Should stop at predetermined limit position.
	Up	⊖	⊕	–	–	
Rear height	Down	–	–	⊕	⊖	
	Up	–	–	⊖	⊕	
Slide	Rear	⊕	⊖	–	–	
	Front	⊖	⊕	–	–	
Reclining	Rear	⊖	⊕	–	–	
	Front	⊕	⊖	–	–	

3. If defective, check the power seat adjuster assembly.



HEATED SEAT SWITCH CONTINUITY CHECK

	Switch position	1	3	4	5	IND	8	9	2	6
Driver's side	HI			○	⊕ ○	⊕ ⊖	⊖ ○	○	ILL	
	OFF									
	LO				⊕ ○	⊕ ⊖	⊖ ○	○		
Passenger's side	HI	○	○		⊕ ○	⊕ ⊖	⊖ ○			
	OFF									
	LO		○	○	⊕ ○	⊕ ⊖	⊖ ○			

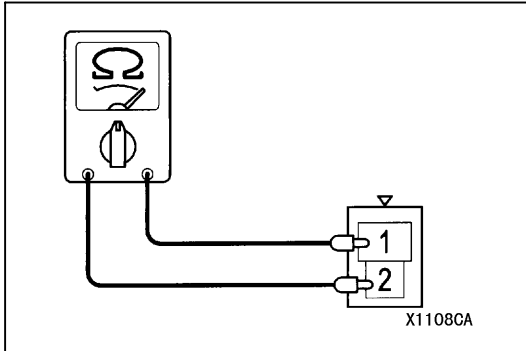


SEAT CUSHION HEATER CHECK

Measure the resistance between terminals.

Standard value (at cabin temperature of 20°C):

Terminal No.	Sport seat	Except sport seat
Between terminals 1–3	6.0Ω±10%	5.0Ω±10%
Between terminals 2–3	6.4Ω±10%	5.4Ω±10%



SEATBACK HEATER CHECK

Measure the resistance between terminals.

Standard value (at cabin temperature of 20°C):

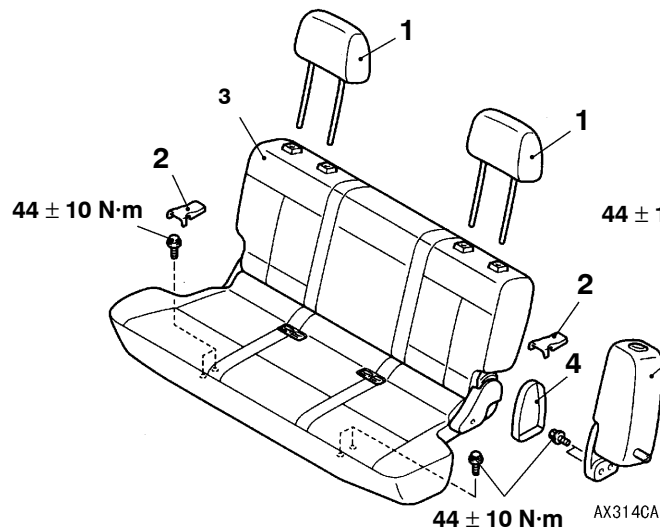
Terminal No.	Sport seat	Except sport seat
Between terminals 1–2	6.0Ω±10%	6.0Ω±10%

REAR/SECOND SEAT

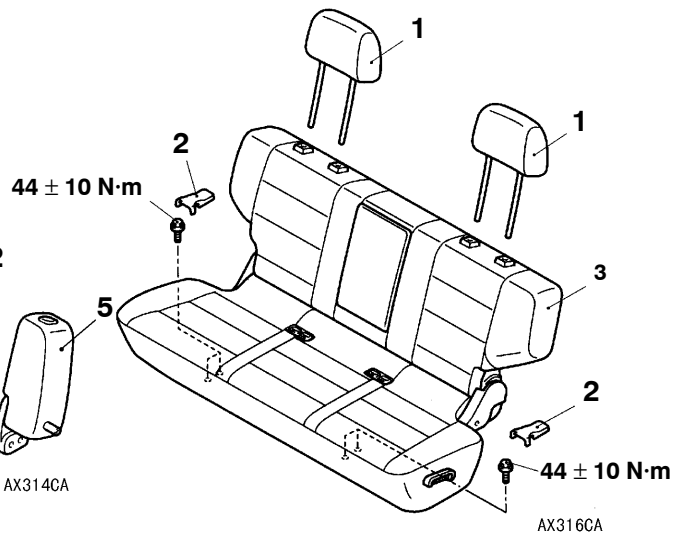
REMOVAL AND INSTALLATION

<Bench seat>

Short wheelbase

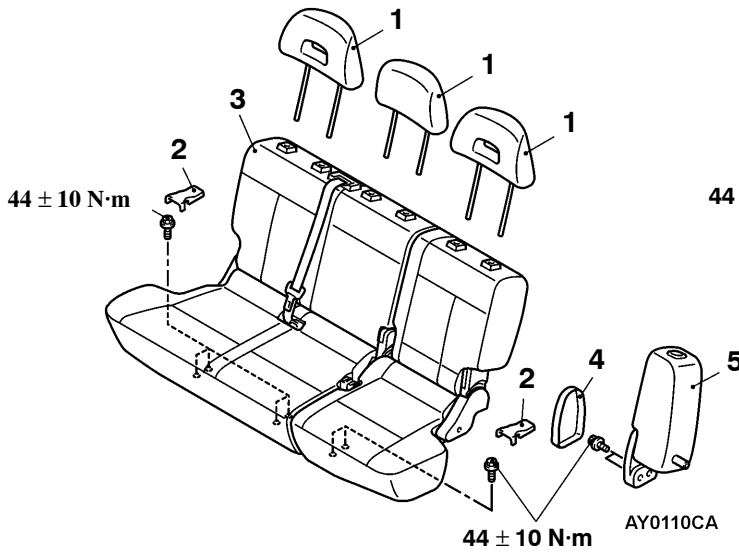


Long wheelbase

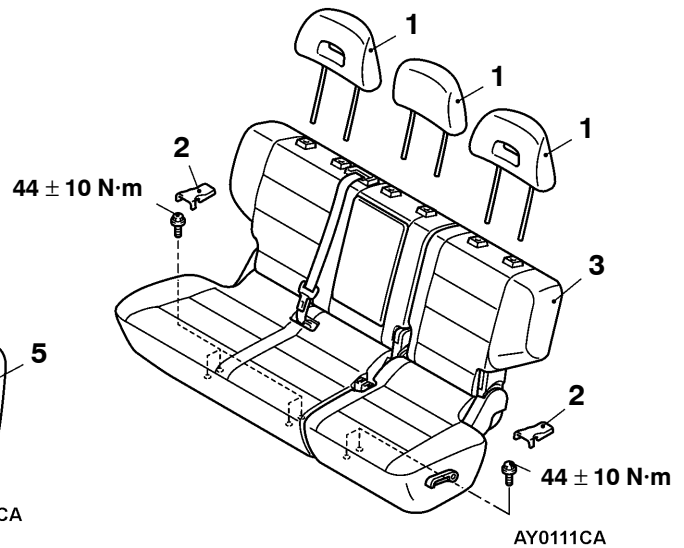


<Separate seat>

Short wheelbase



Long wheelbase



1. Headrest

Rear/second seat assembly removal steps

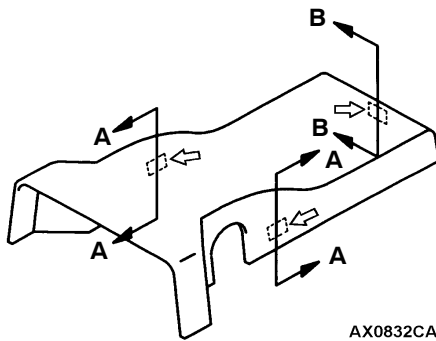
2. Seat anchor cover
3. Rear/second seat assembly

Seat side back assembly removal steps

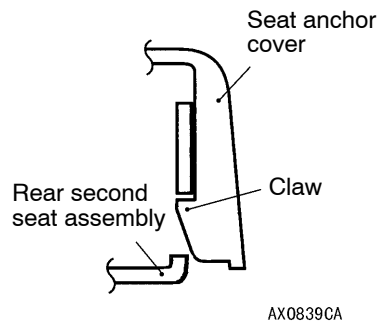
4. Seat hinge cover
5. Seat side back assembly

CLAW POSITION

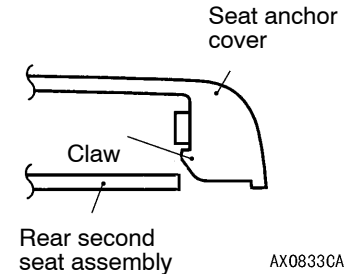
<Seat anchor cover>



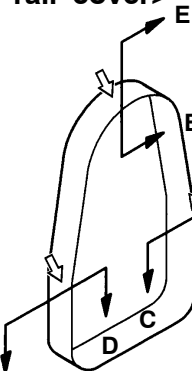
Section A – A



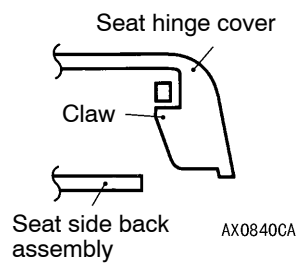
Section B – B



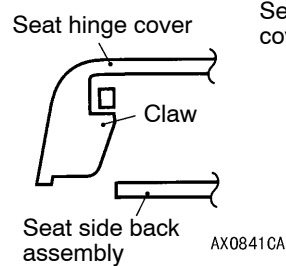
<Front rail cover>



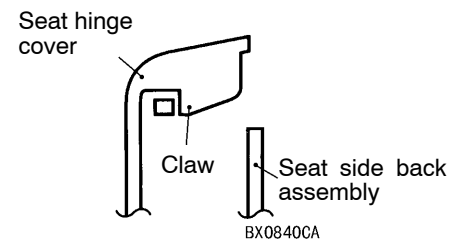
Section C – C



Section D – D



Section E – E



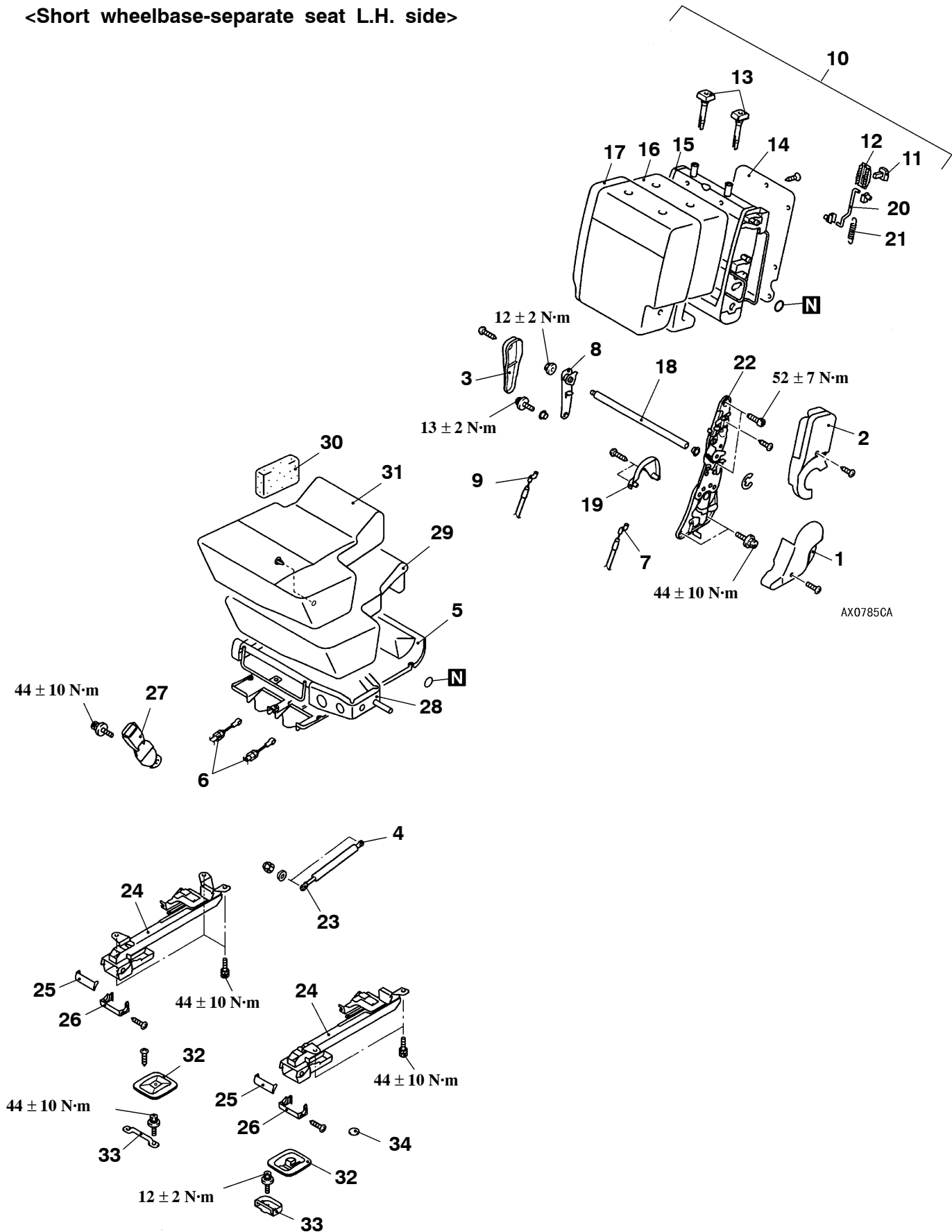
NOTE
↔ : Claw position

AX0831CA

Disassembly steps

1. Lower reclining adjuster cover
2. Center reclining adjuster cover
3. Gas damper connection
4. Rear seat cushion under cover
5. Catch cable connection
6. Catch cable
7. Rear seat back assembly
8. Folding lever knob
9. Folding knob garnish
10. Rear seat back board
11. Rear seat back frame
12. Rear seat back pad
13. Rear seat back cover
14. Shaft
15. Reclining adjuster back cover
16. Rod
17. Spring
18. Reclining adjuster
19. Gas damper
20. Rear seat catch assembly
21. Upper foot cover
22. Lower foot cover
23. Rear seat cushion frame
24. Rear seat cushion pad
25. Rear seat cushion cover
26. Striker cover
27. Striker
28. Plug

<Short wheelbase-separate seat L.H. side>

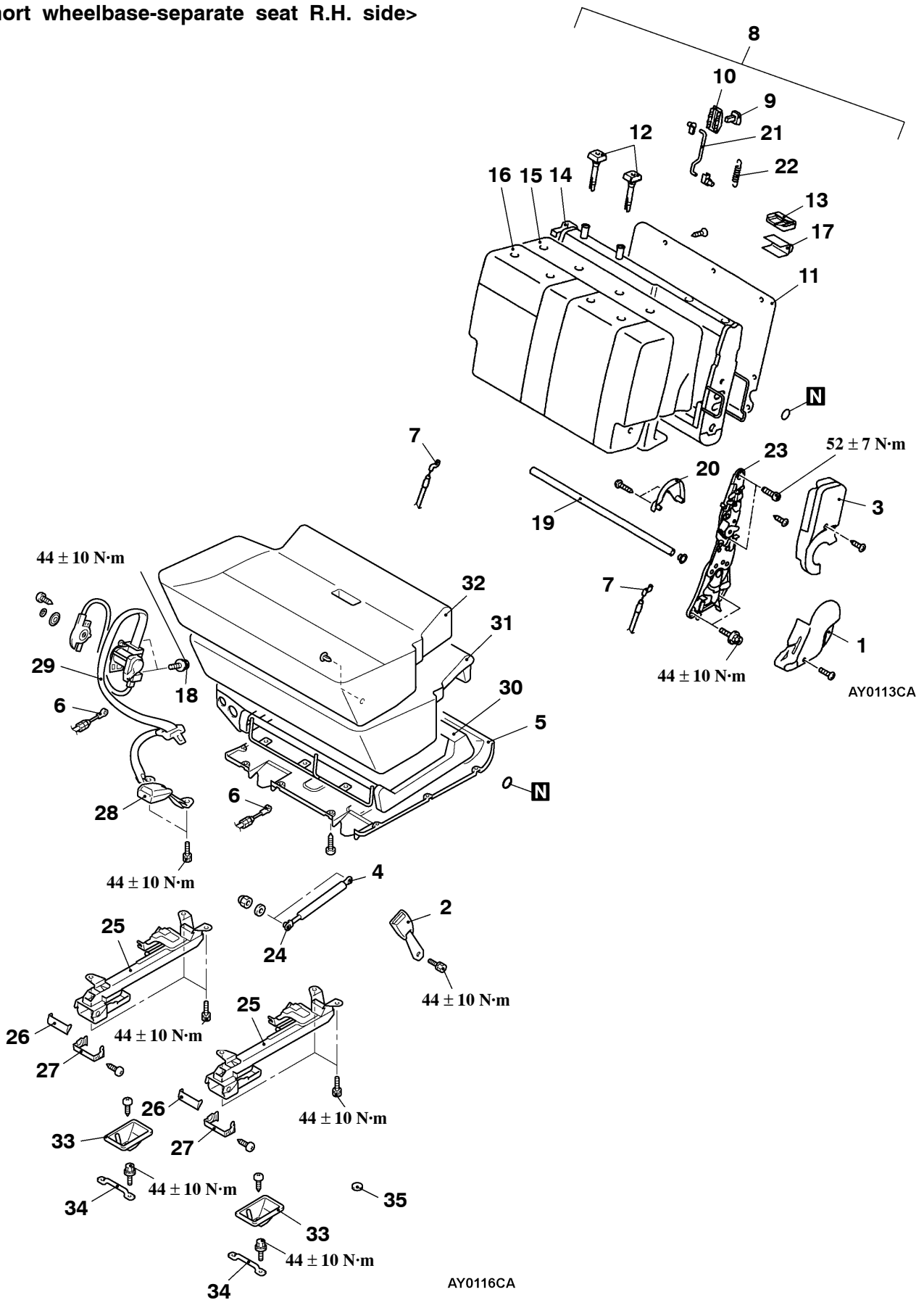


Disassembly steps

- | | |
|------------------------------------|-----------------------------------|
| 1. Lower reclining adjuster cover | 19. Reclining adjuster back cover |
| 2. Center reclining adjuster cover | 20. Rod |
| 3. Free hinge cover | 21. Spring |
| 4. Gas damper connection | 22. Reclining adjuster |
| 5. Rear seat cushion under cover | 23. Gas damper |
| 6. Catch cable A, B connection | 24. Rear seat catch assembly |
| 7. Catch cable A | 25. Upper foot cover |
| 8. Hinge bracket | 26. Lower foot cover |
| 9. Catch cable B | 27. Inner seat belt |
| 10. Rear seat back assembly | <Vehicles for South Africa> |
| 11. Folding lever knob | 28. Rear seat cushion frame |
| 12. Folding knob garnish | 29. Rear seat cushion pad |
| 13. Headrest restraint guide | 30. Support pad |
| 14. Rear seat back board | 31. Rear seat cushion cover |
| 15. Rear seat back frame | 32. Striker cover |
| 16. Rear seat back pad | 33. Striker |
| 17. Rear seat back cover | 34. Plug |
| 18. Shaft | |



<Short wheelbase-separate seat R.H. side>



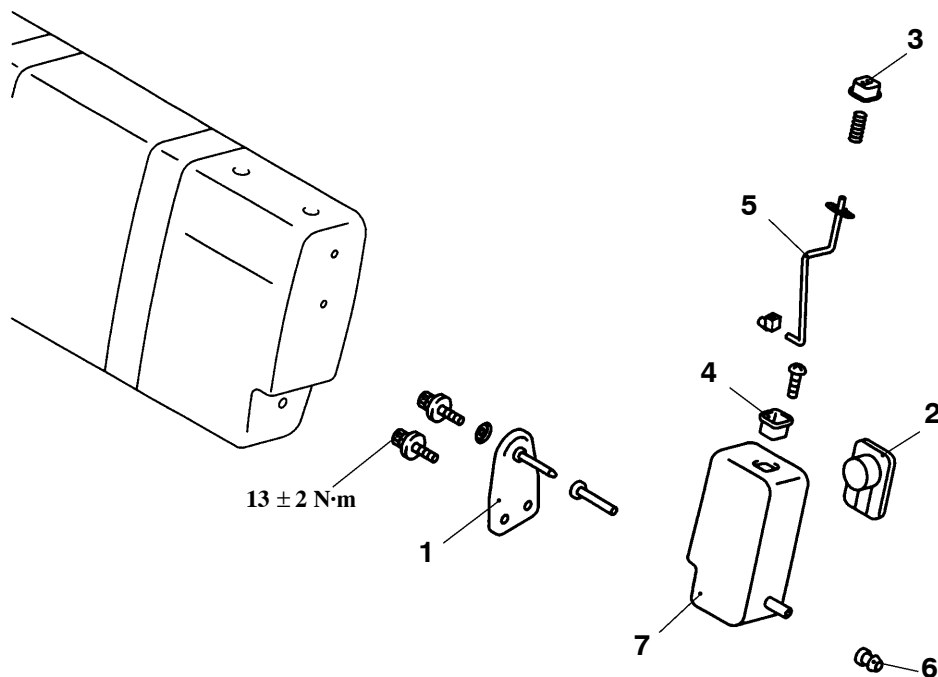
Disassembly steps

1. Lower reclining adjuster cover
2. Inner seat belt <Vehicles for South Africa>
3. Center reclining adjuster cover
4. Gas damper connection
5. Rear seat cushion under cover
6. Catch cable A connection
7. Catch cable A
8. Rear seat back assembly
9. Folding lever knob
10. Folding knob garnish
11. Rear seat back board
12. Headrest guide
13. Sash anchor garnish <Vehicles for South Africa>
14. Rear seat back frame
15. Rear seat back pad
16. Rear seat back cover
17. Seat belt protector <Vehicles for South Africa>
18. Center seat belt connection <Vehicles for South Africa>

19. Shaft
20. Reclining adjuster back cover
21. Rod
22. Spring
23. Reclining adjuster
24. Gas damper
25. Rear seat catch assembly
26. Upper foot cover
27. Lower foot cover
28. Inner seat belt <Vehicles for South Africa>
29. Center seat belt <Vehicles for South Africa>
30. Rear seat cushion frame
31. Rear seat cushion pad
32. Rear seat cushion cover
33. Striker cover
34. Striker
35. Plug

◀A▶

<Short wheelbase-Rear seat side back assembly>



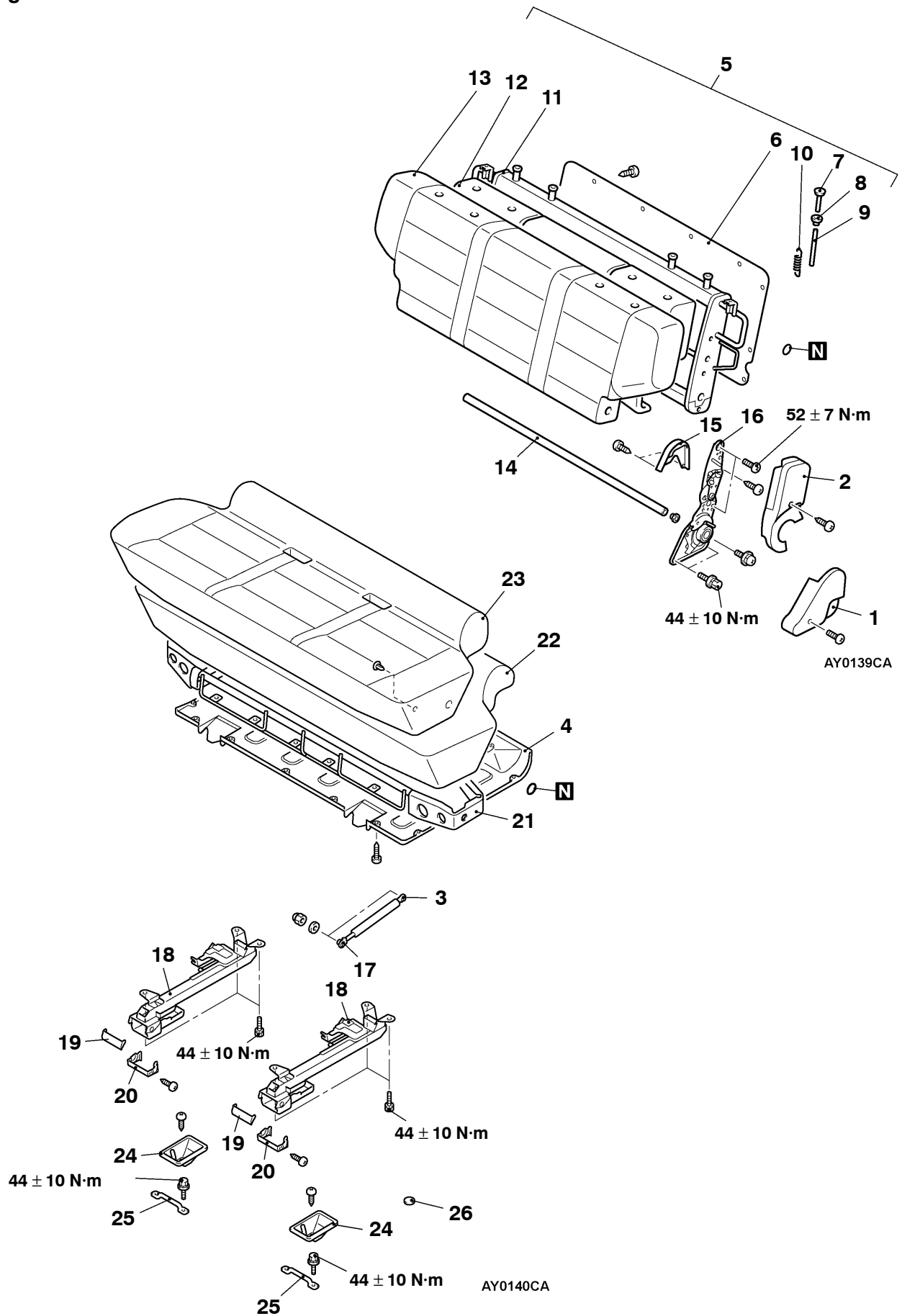
AX0789CA

Disassembly steps

1. Hinge bracket
2. Cup holder
3. Knob
4. Knob guide

5. Rod
6. Bush
7. Rear seat side back

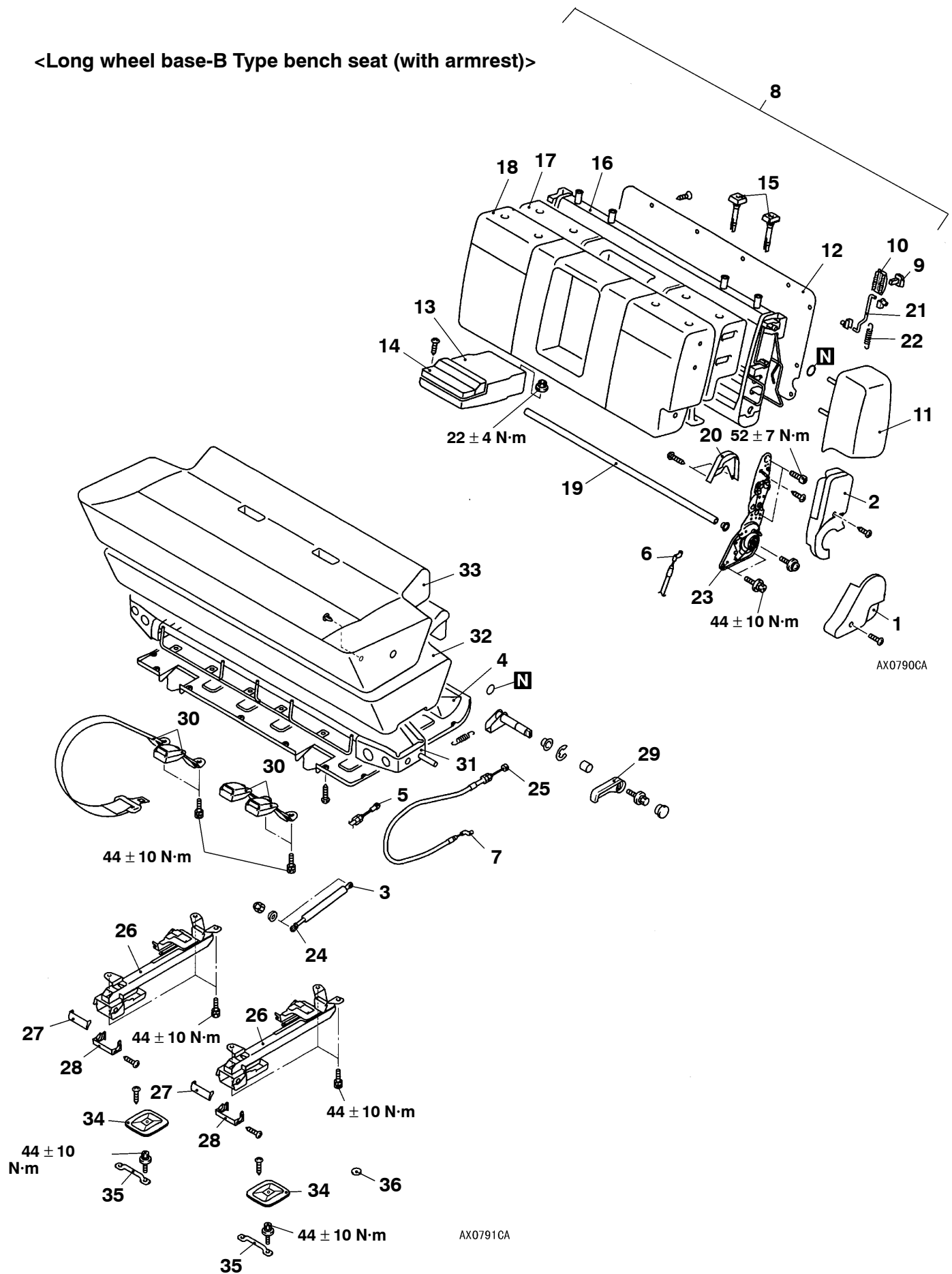
<Long wheelbase-bench seat>



Disassembly steps

1. Lower reclining adjuster cover
2. Center reclining adjuster cover
3. Gas damper connection
4. Rear seat cushion under cover
5. Rear seat back assembly
6. Second seat back board
7. Knob
8. Knob guide
9. Rod
10. Spring
11. Second seat back frame
12. Second seat back pad
13. Second seat back cover
14. Shaft
15. Reclining adjuster back cover
16. Reclining adjuster
17. Gas damper
18. Rear seat catch assembly
19. Upper foot cover
20. Lower foot cover
21. Second seat cushion frame
22. Second seat cushion pad
23. Second seat cushion cover
24. Striker cover
25. Striker
26. Plug

<Long wheel base-B Type bench seat (with armrest)>

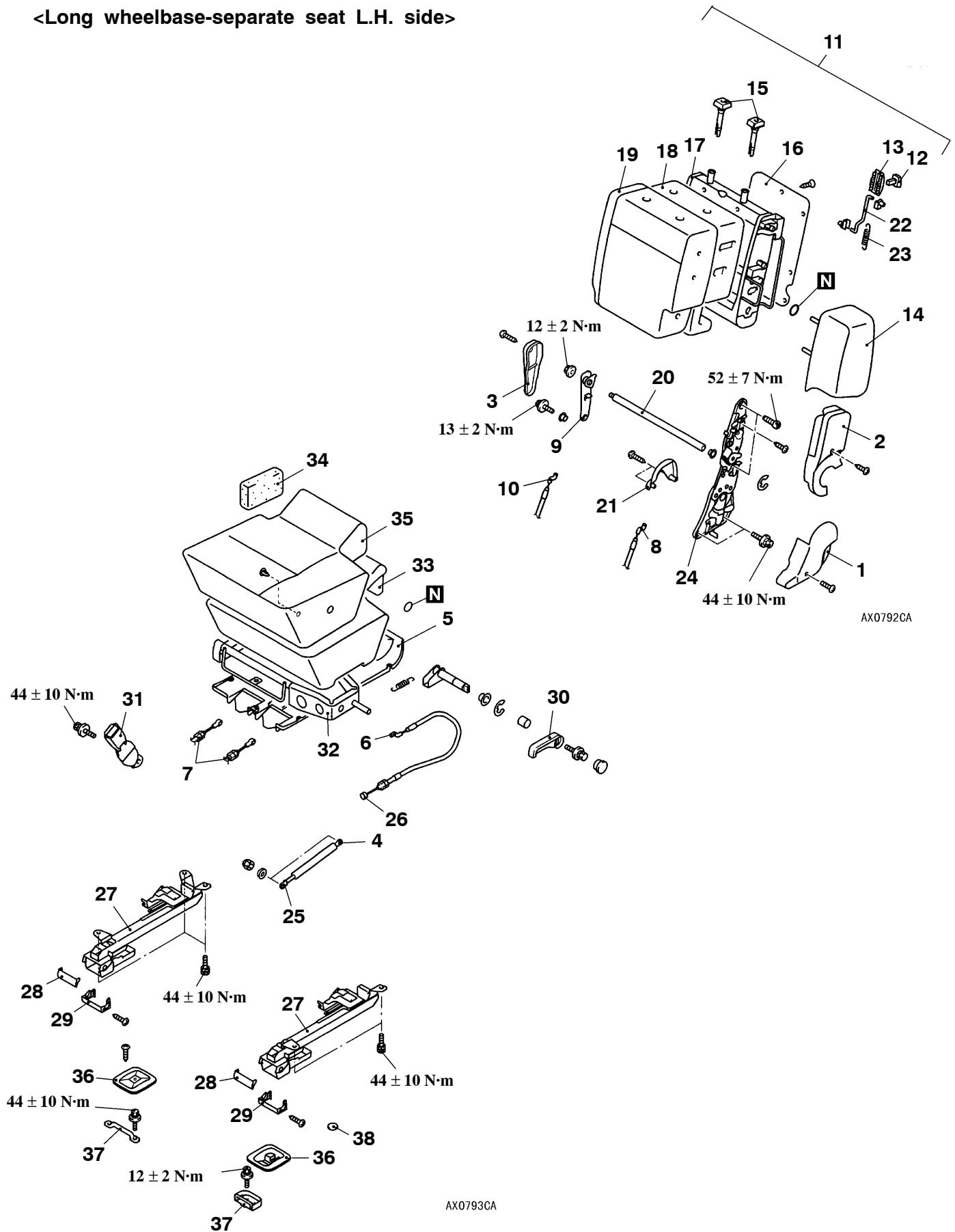


Disassembly steps

- | | |
|------------------------------------|-----------------------------------|
| 1. Lower reclining adjuster cover | 19. Shaft |
| 2. Center reclining adjuster cover | 20. Reclining adjuster back cover |
| 3. Gas damper connection | 21. Rod |
| 4. Rear seat cushion under cover | 22. Spring |
| 5. Catch cable connection | 23. Reclining adjuster |
| 6. Catch cable | 24. Gas damper |
| 7. Reclining cable connection | 25. Reclining cable |
| 8. Rear seat back assembly | 26. Rear seat catch assembly |
| 9. Folding lever knob | 27. Upper foot cover |
| 10. Folding knob garnish | 28. Lower foot cover |
| 11. Second seat side back assembly | 29. Reclining knob |
| 12. Second seat back board | 30. Inner seat belt |
| 13. Armrest | 31. Second seat cushion frame |
| 14. Cup holder | 32. Second seat cushion pad |
| 15. Headrest restraint guide | 33. Second seat cushion cover |
| 16. Second seat back frame | 34. Striker cover |
| 17. Second seat back pad | 35. Striker |
| 18. Second seat back cover | 36. Plug |



<Long wheelbase-separate seat L.H. side>

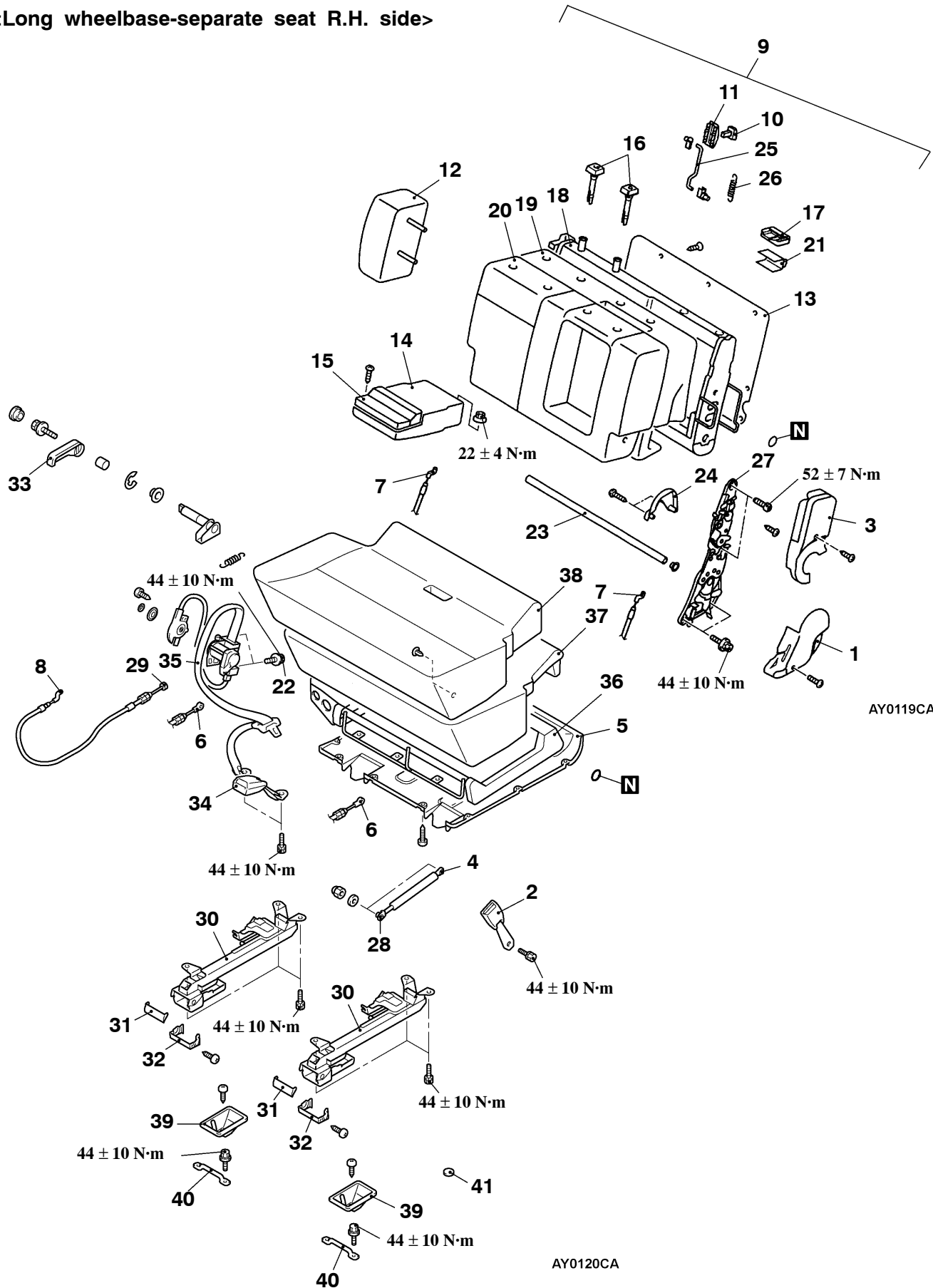


Disassembly steps

- | | |
|------------------------------------|---|
| 1. Lower reclining adjuster cover | 21. Reclining adjuster back cover |
| 2. Center reclining adjuster cover | 22. Rod |
| 3. Free hinge cover | 23. Spring |
| 4. Gas damper connection | 24. Reclining adjuster |
| 5. Rear seat cushion under cover | 25. Gas damper |
| 6. Reclining cable connection | 26. Reclining cable |
| 7. Catch cable A, B connection | 27. Second seat catch assembly |
| 8. Catch cable A | 28. Upper foot cover |
| 9. Hinge bracket | 29. Lower foot cover |
| 10. Catch cable B | 30. Reclining knob |
| 11. Second seat back assembly | 31. Inner seat belt <Except General Export> |
| 12. Folding lever knob | 32. Second seat cushion frame |
| 13. Folding knob garnish | 33. Second seat cushion pad |
| 14. Second seat side back assembly | 34. Support pad |
| 15. Headrestrest guide | 35. Second seat cushion cover |
| 16. Second seat back board | 36. Striker cover |
| 17. Second seat back frame | 37. Striker |
| 18. Second seat back pad | 38. Plug |
| 19. Second seat back cover | |
| 20. Shaft | |



<Long wheelbase-separate seat R.H. side>



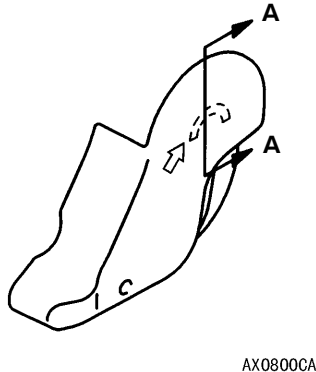
Disassembly steps

1. Lower reclining adjuster cover
2. Inner seat belt <Except General Export>
3. Center reclining adjuster cover
4. Gas damper connection
5. Rear seat cushion under cover
6. Catch cable A connection
7. Catch cable A
8. Reclining cable connection
9. Second seat back assembly
10. Folding lever knob
11. Folding knob garnish
12. Second seat side back assembly
13. Second seat back board
14. Armrest
15. Cup holder
16. Headrest guide
17. Sash anchor garnish <Vehicles for South Africa>
18. Second seat back frame
19. Second seat back pad
20. Second seat back cover
21. Seat belt protector <Vehicles for South Africa>
22. Center seat belt connection <Vehicles for South Africa>
23. Shaft
24. Reclining adjuster back cover
25. Rod
26. Spring
27. Reclining adjuster
28. Gas damper
29. Reclining cable
30. Second seat catch assembly
31. Upper foot cover
32. Lower foot cover
33. Reclining knob
34. Inner seat belt <Except General Export>
35. Center seat belt <Vehicles for South Africa>
36. Second seat cushion frame
37. Second seat cushion pad
38. Second seat cushion cover
39. Striker cover
40. Striker
41. Plug

◀A▶

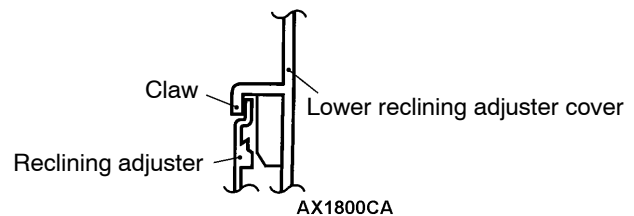
CLAW POSITION

<Lower reclining adjuster cover>

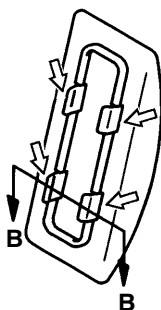


AX0800CA

Section A – A

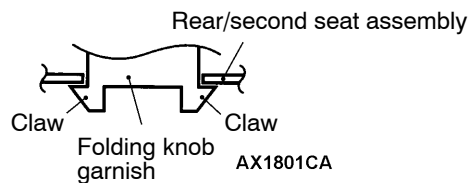


<Folding knob garnish>



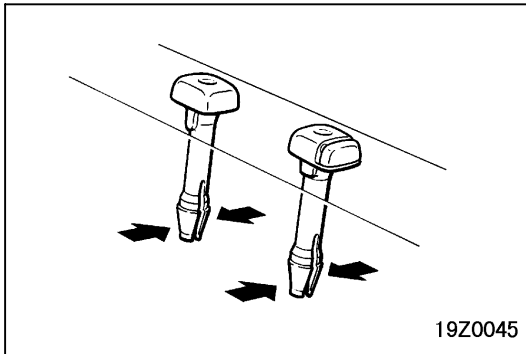
AX0830CA

Section B – B



NOTE

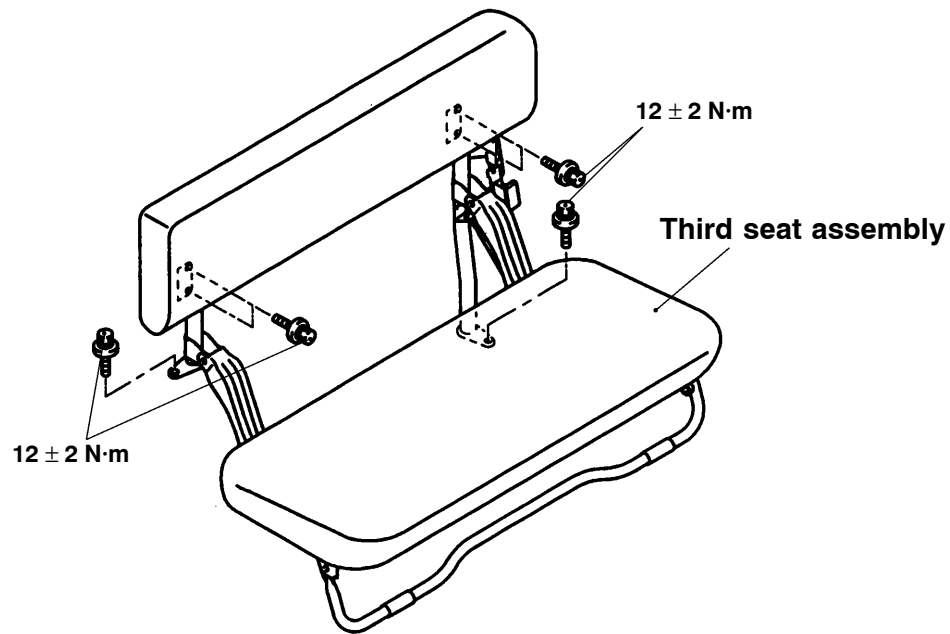
◀▶ : Claw position



DISASSEMBLY SERVICE POINT

◀A▶ HEADRESTRAINT GUIDE REMOVAL

THIRD SEAT <FACE-TO-FACE BENCH SEAT> REMOVAL AND INSTALLATION

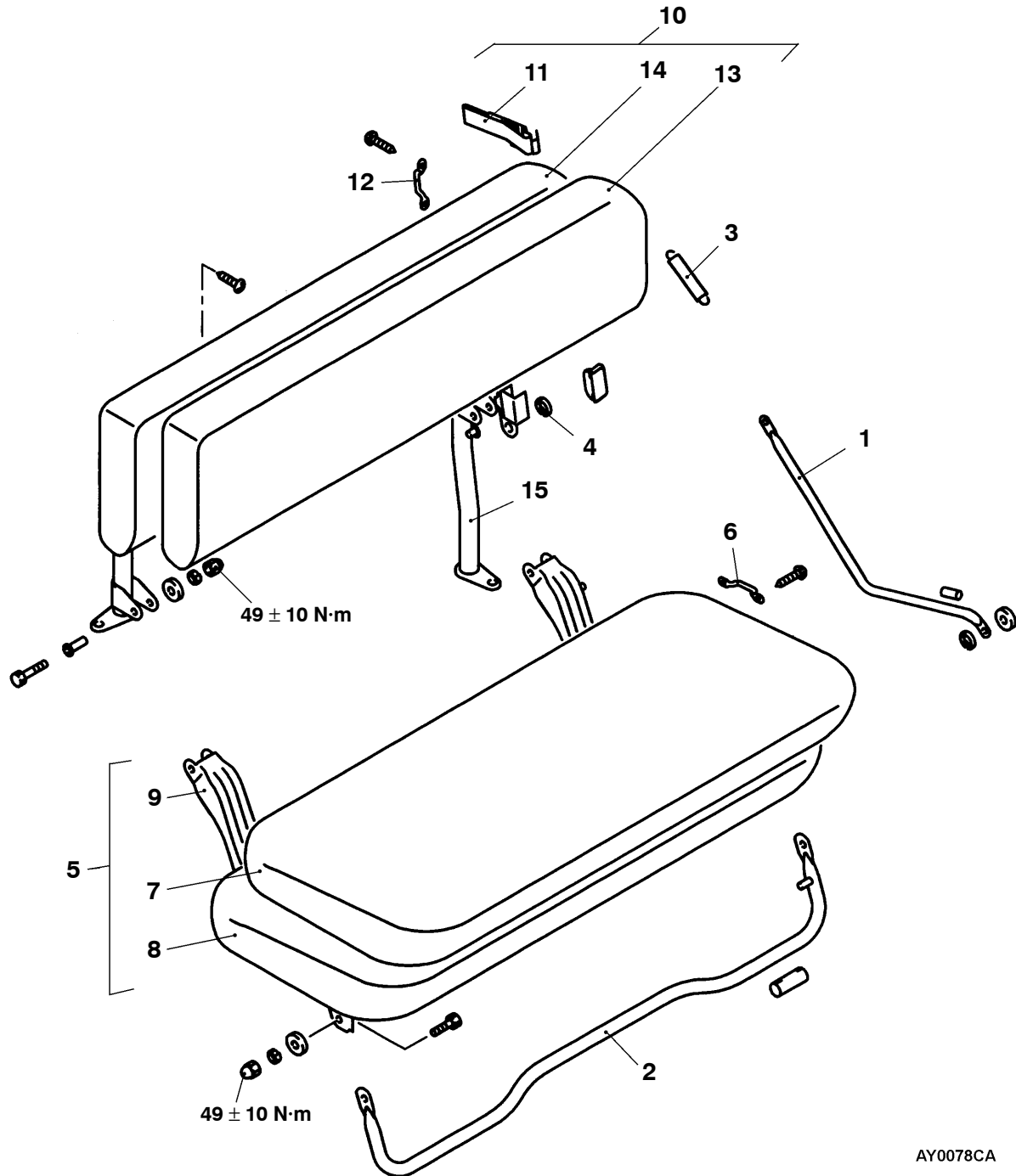


AY0080CA

NOTE

Install each seat assembly mounting bolt in every installation location, then tighten to the specified torque.

DISASSEMBLY AND REASSEMBLY



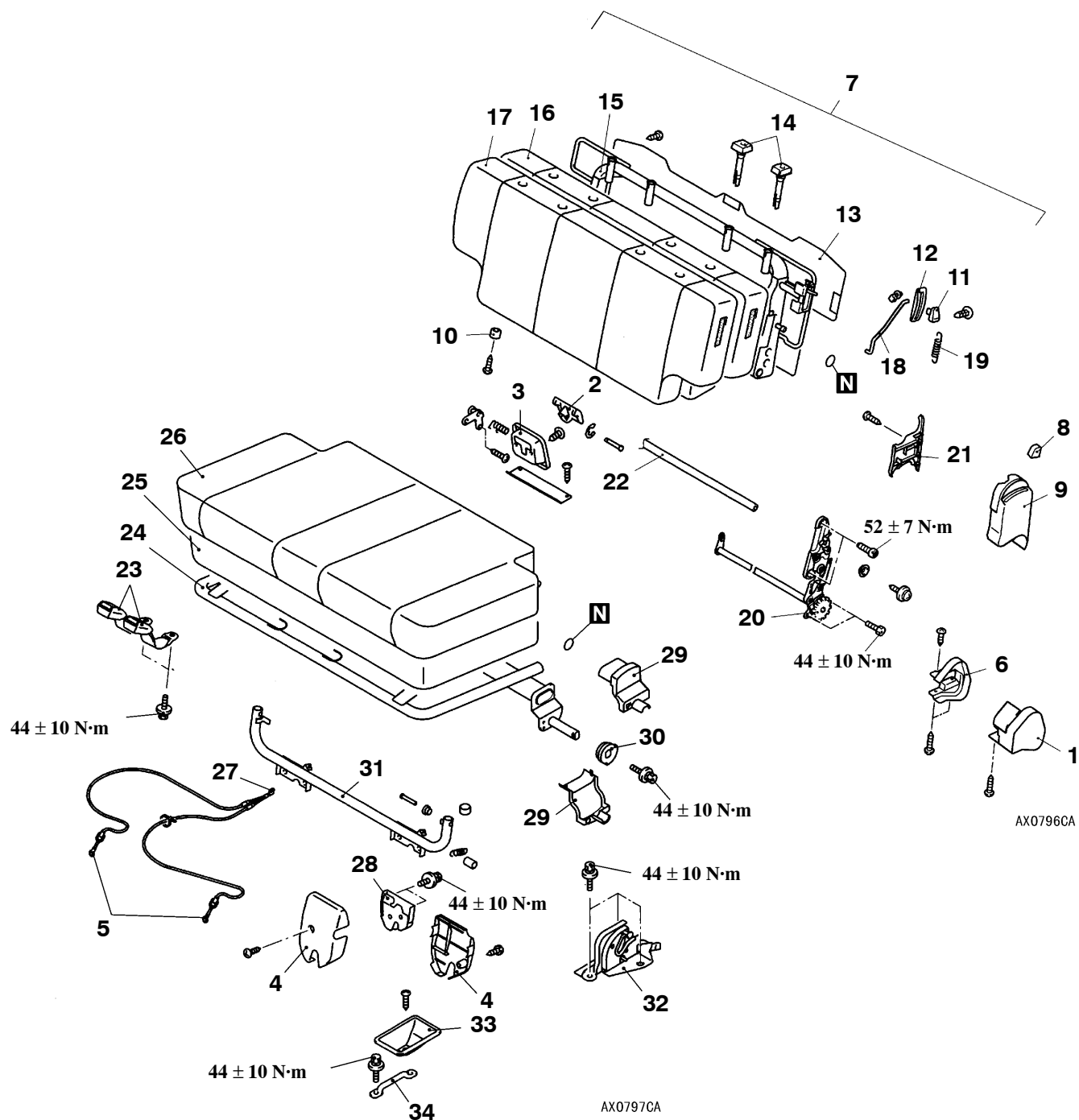
AY0078CA

Disassembly steps

- | | |
|--------------------------------|------------------------------|
| 1. Link assembly | 9. Third seat cushion frame |
| 2. Leg assembly | 10. Third seat back assembly |
| 3. Spring | 11. Strap assembly |
| 4. Release lever connection | 12. Footman loop B |
| 5. Third seat cushion assembly | 13. Third seat back cover |
| 6. Footman loop A | 14. Third seat back pad |
| 7. Third seat cushion cover | 15. Third seat back frame |
| 8. Third seat cushion pad | |

THIRD SEAT <NORMAL BENCH SEAT>

DISASSEMBLY AND REASSEMBLY



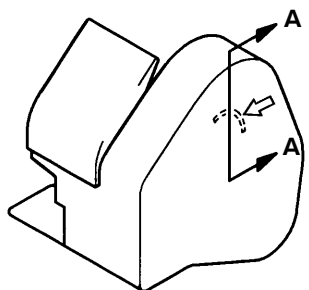
Disassembly steps

- | | |
|-----------------------------------|------------------------------------|
| 1. Outer reclining adjuster cover | 18. Rod |
| 2. Catch release knob | 19. Spring |
| 3. Catch release knob garnish | 20. Reclining adjuster |
| 4. Latch cover | 21. Inner reclining adjuster cover |
| 5. Catch cable connection | 22. Shaft |
| 6. Inner reclining adjuster cover | 23. Inner seat belt |
| 7. Third seat back assembly | 24. Third seat cushion frame |
| 8. Reclining knob | 25. Third seat cushion pad |
| 9. Reclining adjuster cover | 26. Third seat cushion cover |
| 10. Damper | 27. Catch cable |
| 11. Folding lever knob | 28. Third seat latch |
| 12. Folding knob garnish | 29. Arm cover |
| 13. Third seat back board | 30. Cam |
| 14. Headrest restraint guide | 31. Third seat leg frame assembly |
| 15. Third seat back frame | 32. Catch assembly |
| 16. Third seat back pad | 33. Striker cover |
| 17. Third seat back cover | 34. Striker |



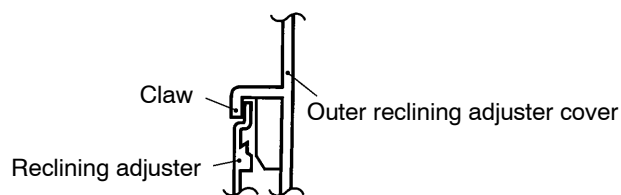
CLAW POSITION

<Outer reclining adjuster cover>



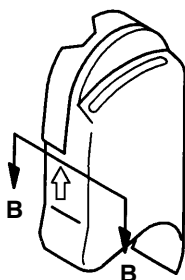
AX0805CA

Section A – A



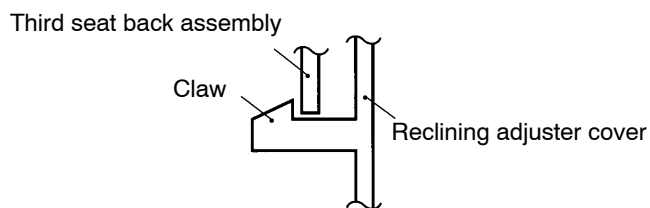
AX1264CA

<Reclining adjuster cover>



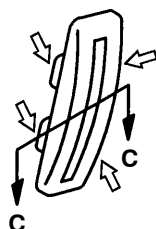
AX0806CA

Section B – B



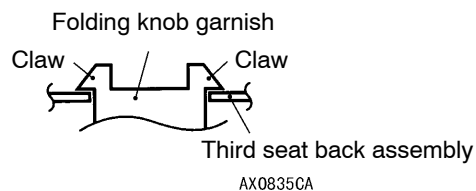
AX0834CA

<Folding knob garnish>



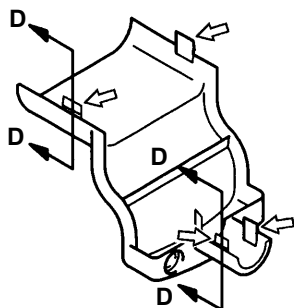
AX0829CA

Section C – C



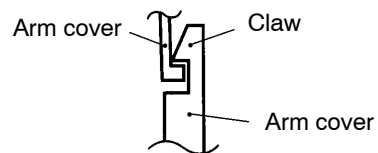
AX0835CA

<Arm cover>



AX0807CA

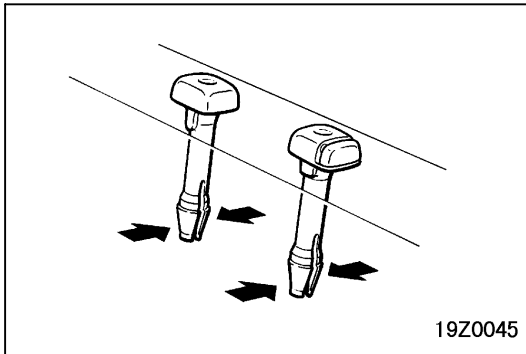
Section D – D



AX0836CA

NOTE

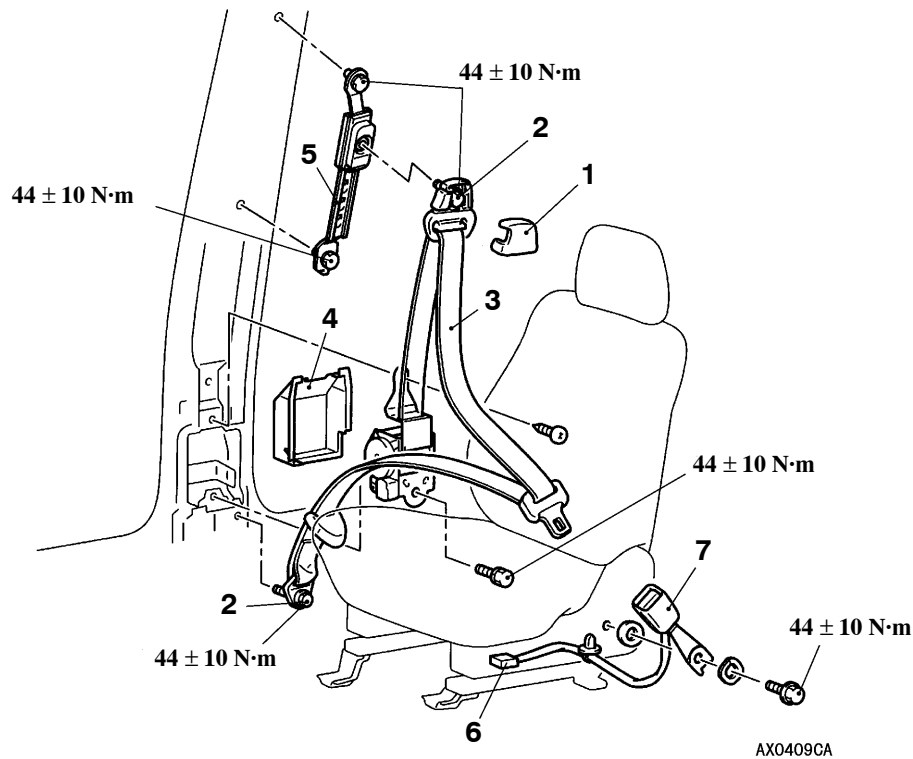
↔ : Claw position



DISASSEMBLY SERVICE POINT

◀A▶ HEADRESTRAINT GUIDE REMOVAL

FRONT SEAT BELT REMOVAL AND INSTALLATION

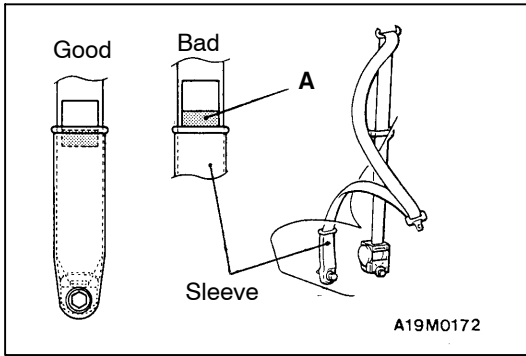


Outer seat belt removal steps

1. Sash guide cover
2. Outer seat belt connection
 - Lower quarter trim <Short wheelbase> (Refer to P.52A-13.)
 - Center pillar trim <Long wheelbase> (Refer to P.52A-15.)
3. Outer seat belt
4. Front noise protector
5. Shoulder anchor adjuster

Inner seat belt removal steps

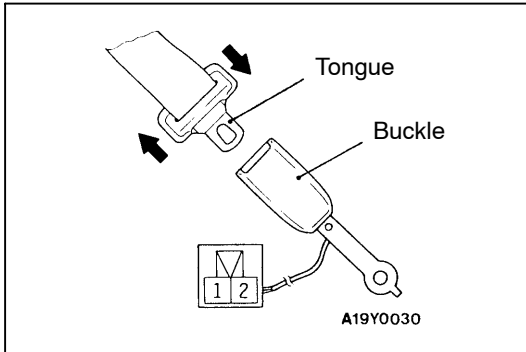
- Front seat assembly (Refer to P.52A-18.)
- 6. Seat belt switch harness connector
- 7. Inner seat belt



INSPECTION

OUTER SEAT BELT CHECK

Check that the A section (red) of the label attached to the outer seat belt is not exposed from the outer seat belt sleeve. If it is exposed, release the outer seat belt.

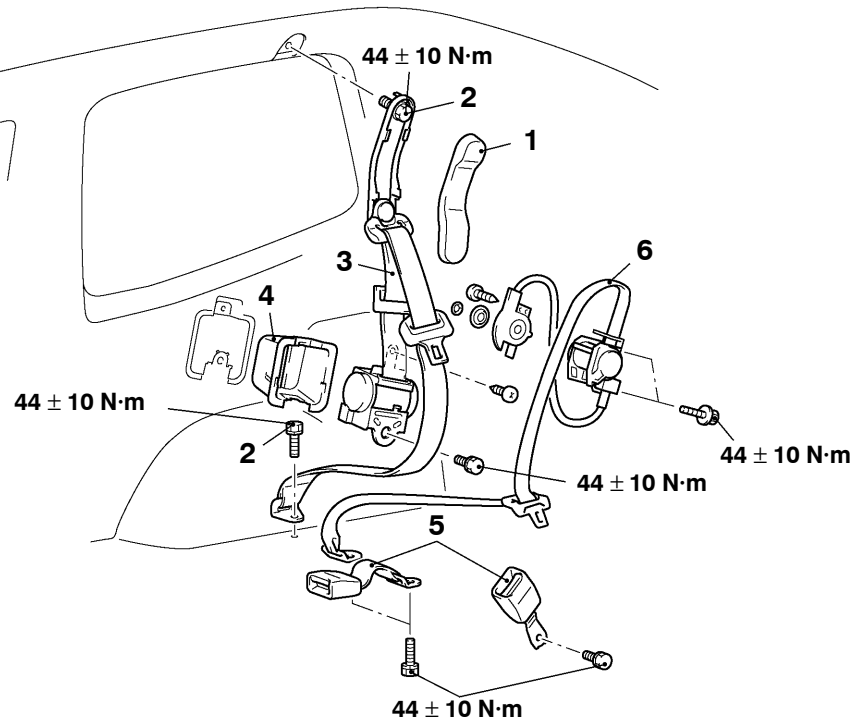


SEAT BELT BUCKLE CONTINUITY CHECK

Items	Terminal No.	
	1	2
Fastened seat belt		
Unfastened seat belt	○	○

REAR SEAT BELT <SOUTH AFRICA-SHORT WHEELBASE>

REMOVAL AND INSTALLATION



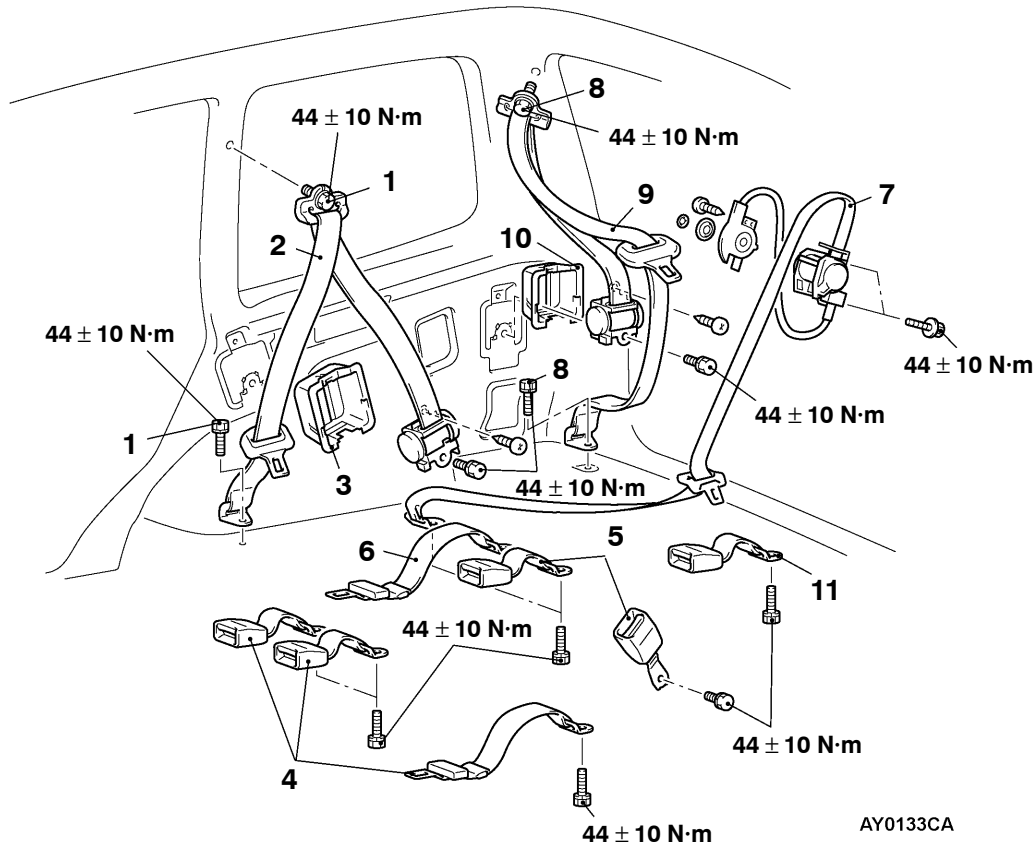
AY0132CA

Outer seat belt removal steps

- Rear seat assembly
(Refer to P.52A-24.)
- Upper quarter trim
(Refer to P.52A-13.)
- 1. Sash guide cover
- 2. Outer seat belt connection
- 3. Outer seat belt
- 4. ELR cover

Inner seat belt and center seat belt removal steps

- Rear seat assembly
(Refer to P.52A-24.)
- 5. Inner seat belt (Refer to P.52A-28, 30.)
- 6. Center seat belt
(Refer to P.52A-30.)

SECOND/THIRD SEAT BELT <LONG WHEELBASE>**REMOVAL AND INSTALLATION****Second seat belt Removal steps**

- Lower quarter trim (Refer to P.52A-15.)
- 1. Outer seat belt connection
- 2. Outer seat belt
- 3. ELR cover
- 4. Inner seat belt (Refer to P.52A-34, 36, 38.)
- 5. Inner seat belt <Bench seat> (Refer to P.52A-34.)
- 6. Inner seat belt <Separate seat, 2-point lap belt> (Refer to P.52A-36, 38.)
- 7. Center seat belt <3-point lap belt> (Refer to P.52A-38.)

Third seat belt Removal steps

- Lower quarter trim (Refer to P.52A-15.)
- Pillar duct (RH) (Refer to GROUP 55A)
- Rear blower assembly (RH) (Refer to GROUP 55A)
- TV tuner (LH) (Refer to GROUP 54)
- 8. Outer seat belt connection
- 9. Outer seat belt
- 10. ELR cover
- 11. Inner seat belt (Refer to P.52A-42.)