
ENGINE <6G7-MPI>

CONTENTS

GENERAL	2	ENGINE ASSEMBLY	2
Outline of Change	2		

GENERAL

OUTLINE OF CHANGE

Since the electronic-controlled throttle valve control system has been adopted to 6G72-MPI engine, the removal and installation procedure for the engine assembly has been established. The other service procedures are the same as conventional 6G72-MPI engine. <Vehicles except for Hong Kong>

ENGINE ASSEMBLY

REMOVAL AND INSTALLATION

<6G72-MPI (Vehicles except for Hong Kong)>

Caution

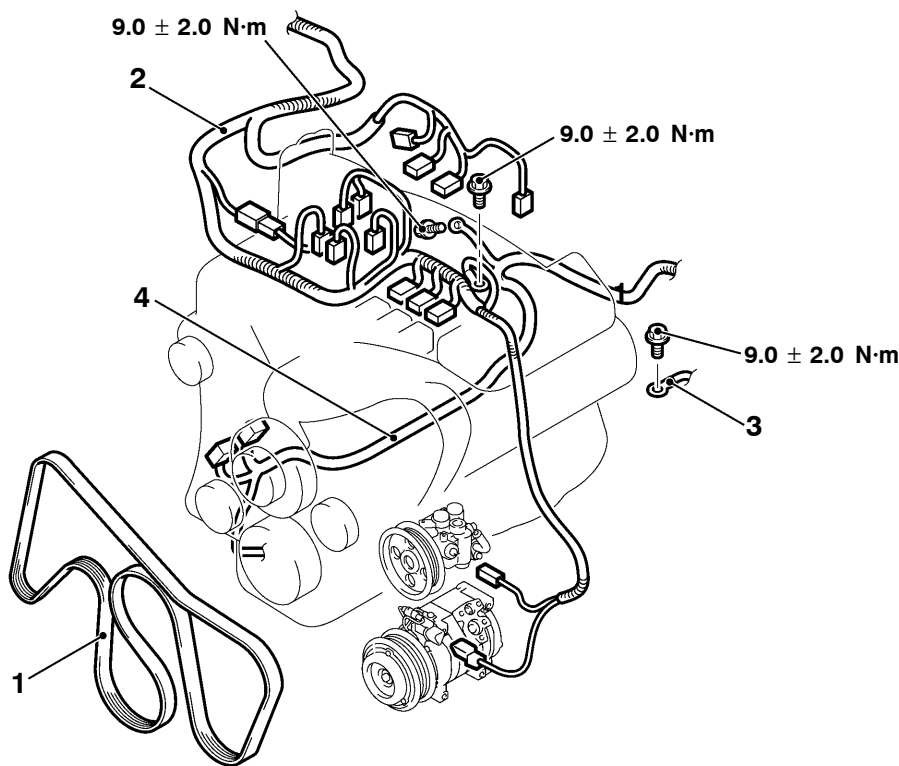
*: Indicates parts which should be initially tightened, and then fully tightened after placing the vehicle horizontally and loading the full weight of the engine on the vehicle body.

Pre-removal Operation

- Fuel Line Pressure Reduction
- Skid Plate and Under Cover Removal
- Engine Oil Draining
- Engine Coolant Draining
- Hood Removal
- Battery Removal
- Air Cleaner and Air Intake Hose Removal
- Radiator Removal
- Front Exhaust Pipe Removal
- Transmission Assembly Removal

Post-installation Operation

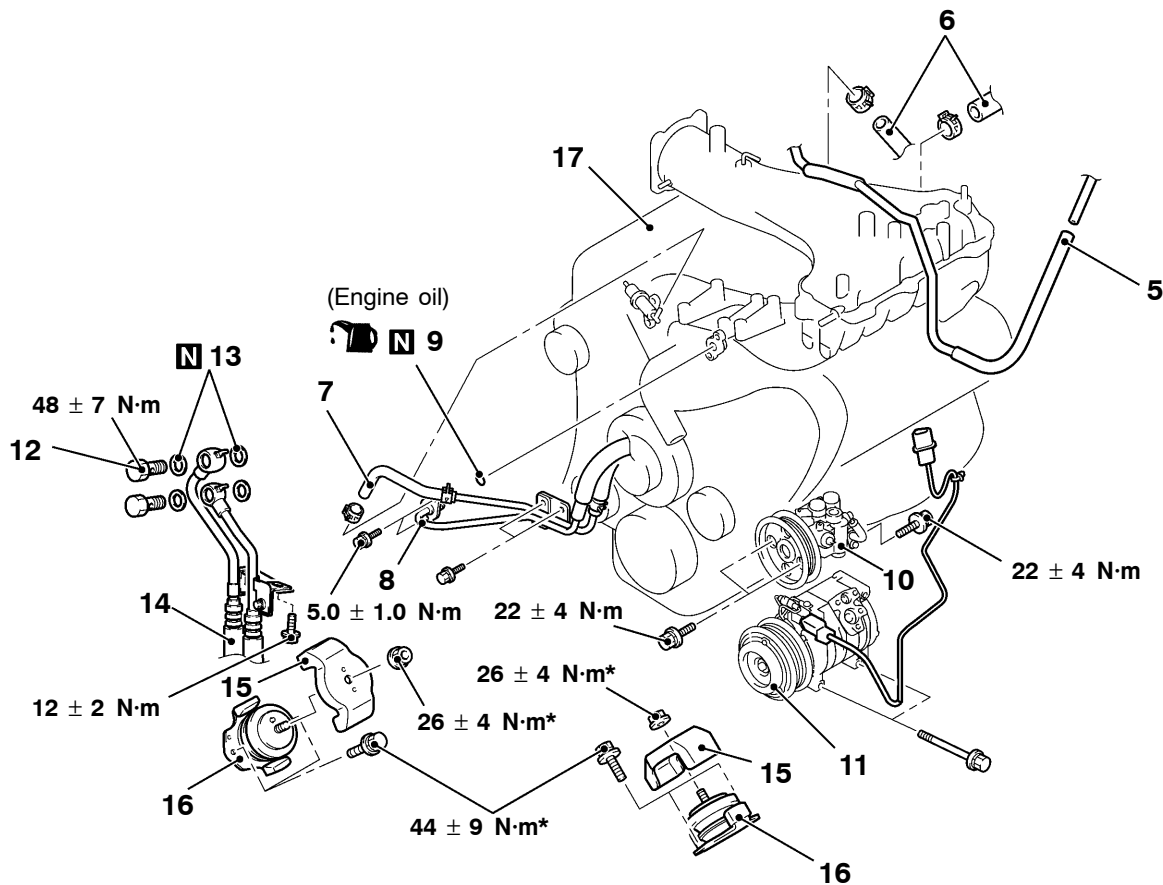
- Transmission Assembly Installation
- Front Exhaust Pipe Installation
- Radiator Installation
- Air Cleaner and Air Intake Hose Installation
- Battery Installation
- Hood Installation
- Engine Oil Refilling
- Engine Coolant Refilling
- Fuel Leak Check
- Drive Belt Tension Check
- Skid Plate and Under Cover Installation



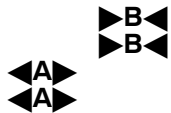
AC402284AB

Removal steps

1. Drive belt
2. Control wiring harness connection
3. Earth cable connection
4. Battery wiring harness connection



AC402285AB



- 5. Vacuum hose connection
- 6. Heater hoses connection
- 7. Fuel return hose connection
- 8. Fuel high-pressure hose connection
- 9. O-ring
- 10. Power steering oil pump assembly
- 11. A/C compressor assembly
- 12. Eye bolts <Vehicles for General Export and GCC>

- 13. Gaskets <Vehicles for General Export and GCC>
- 14. Engine oil cooler hoses connection <Vehicles for General Export and GCC>
- 15. Heat protectors
- 16. Engine front mount insulators
- 17. Engine assembly

REMOVAL SERVICE POINTS**◀A▶ POWER STEERING OIL PUMP ASSEMBLY AND A/C COMPRESSOR ASSEMBLY REMOVAL**

1. Remove the oil pump and A/C compressor (with the hose attached).
2. Suspend the removed oil pump and A/C compressor (by using wire or similar material) at a place where no damage will be caused during removal/installation of the engine assembly.

◀B▶ ENGINE ASSEMBLY REMOVAL

1. Check that all cables, hoses, harness connectors, etc. are disconnected from the engine.
2. Lift the special tool sling chain set (MB991683) and chain block slowly to remove the engine assembly upward from the engine compartment.

INSTALLATION SERVICE POINTS**▶A◀ ENGINE ASSEMBLY INSTALLATION**

Install the engine assembly. When doing so, check carefully that all pipes and hoses are connected, and that none are twisted, damaged, etc.

▶B◀ O-RING/FUEL HIGH-PRESSURE HOSE INSTALLATION

1. Apply a drop of new engine oil to the O-ring.

Caution

Do not let the engine oil get into the delivery pipe will be damaged.

2. Turn the fuel high-pressure hose. To the right and left to install to the delivery pipes.
Be careful not to damage the O-ring. After installing, check that the item turns smoothly.
3. If it does not turn smoothly, the O-ring may be trapped, remove the item, re-install it into the delivery pipes and check again.
4. Tighten the fuel high-pressure hose to the specified torque.

Tightening torque: $5.0 \pm 1.0 \text{ N} \cdot \text{m}$