

# EMISSION CONTROL SYSTEM <6G7-MPI>

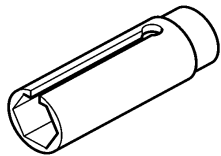
## GENERAL

### OUTLINE OF CHANGES

Some service procedures have been established as the following changes have been made due to the compliance with the emission regulation STEP III.

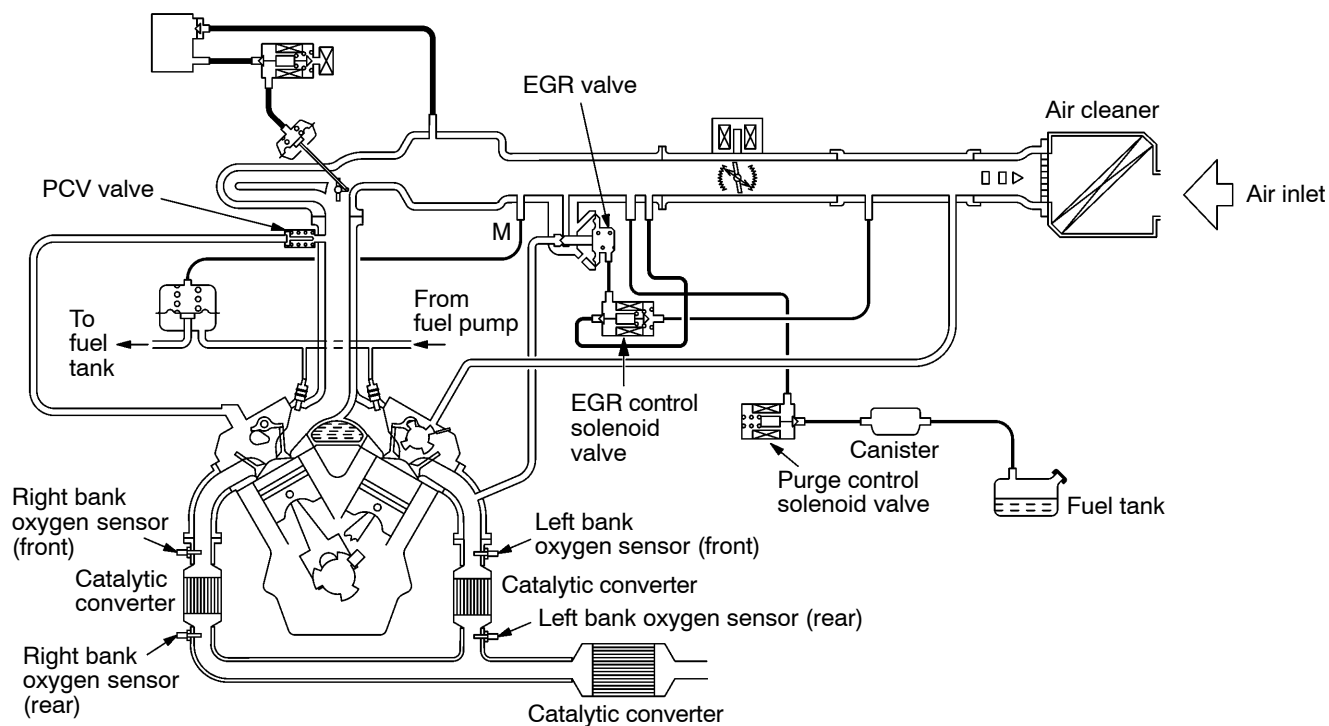
- The front catalytic converter has been added.
- The dual oxygen sensor has been added.
- The canister has been changed.

### SPECIAL TOOL

Tool	Number	Name	Use
	MD998770	Oxygen sensor wrench	Removal and installation of oxygen sensor

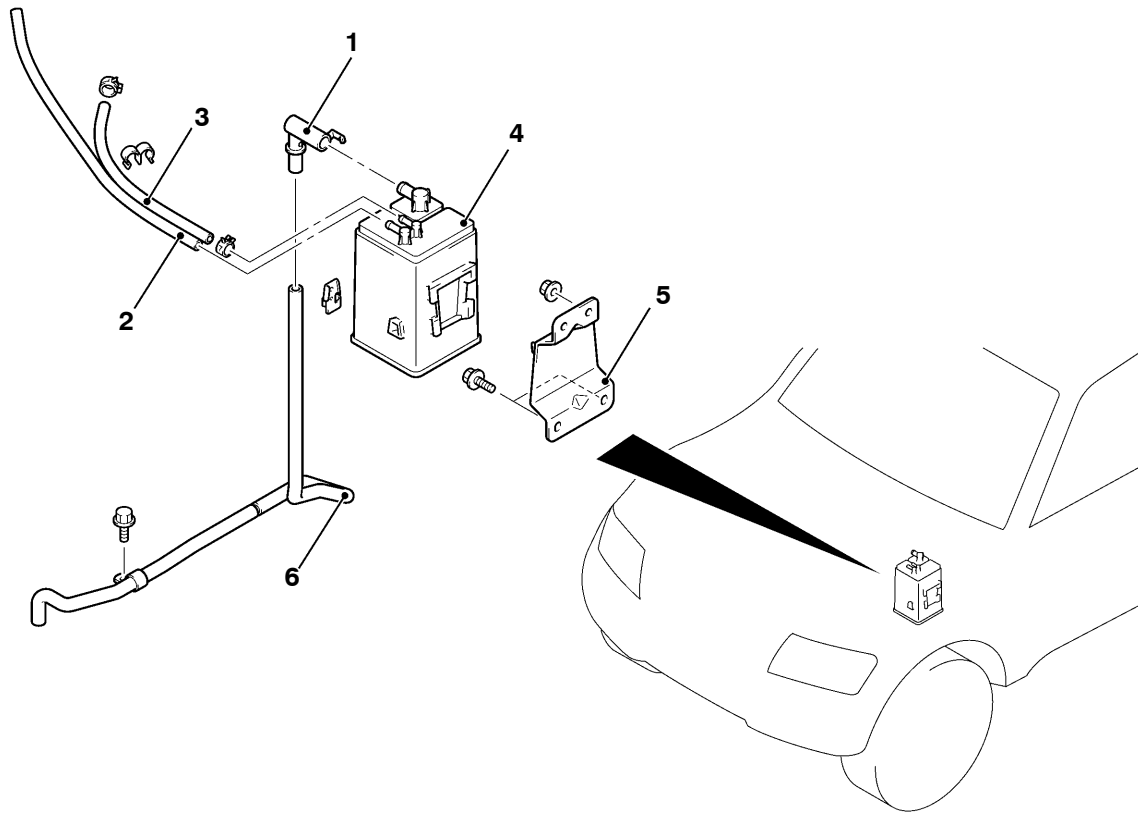
## VACUUM HOSE

### VACUUM HOSE PIPING DIAGRAM



## CANISTER

### REMOVAL AND INSTALLATION



AC505491AB

#### Removal steps

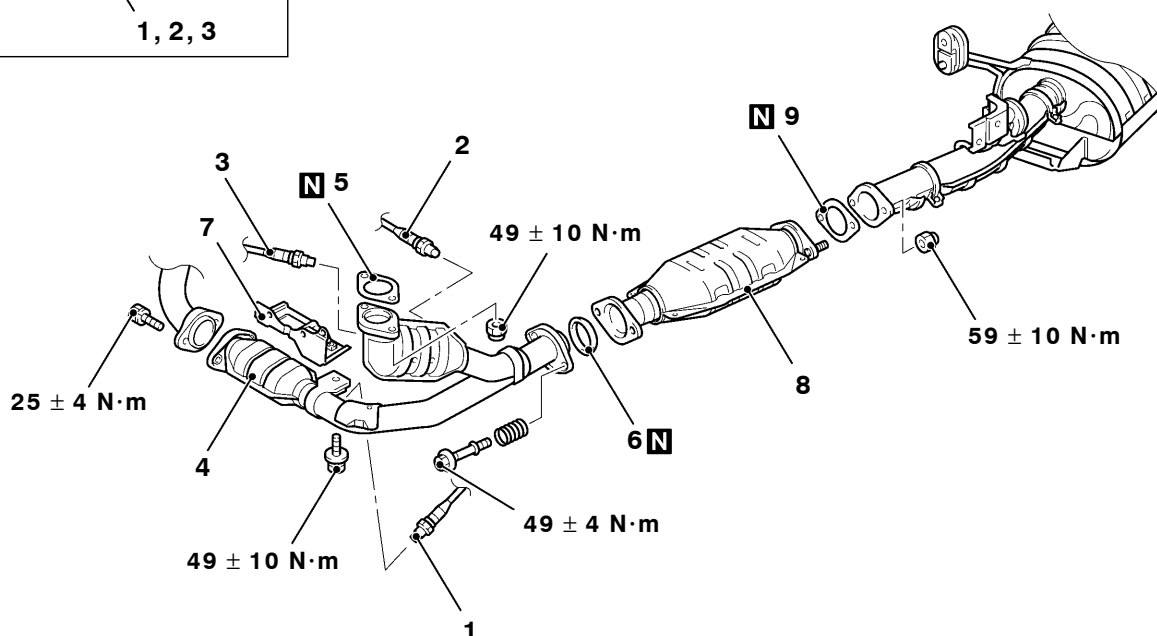
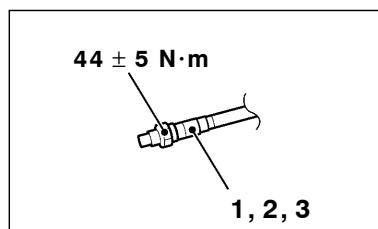
1. Fuel vapour control check valve
2. Fuel vapour control line hose
3. Fuel vapour control line hose

4. Fuel vapour canister
5. Fuel vapour canister bracket
6. Fuel vapour control line hose

# CATALYTIC CONVERTER

## REMOVAL AND INSTALLATION

**Pre-removal and Post-installation Operation**  
Front Under Cover Removal and Installation



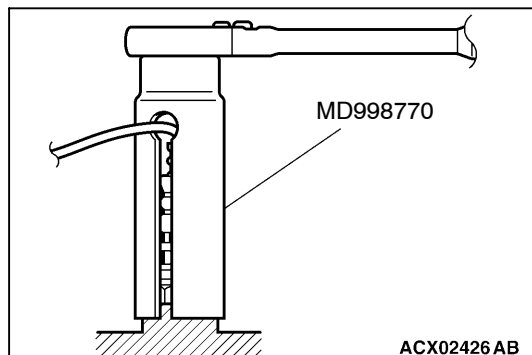
AC505490AB

### Removal steps



1. Right bank oxygen sensor (rear)
2. Left bank oxygen sensor (rear)
3. Left bank oxygen sensor (front)
4. Catalytic converter assembly

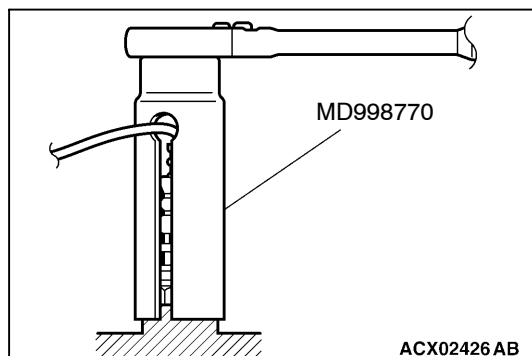
5. Gasket
6. Seal ring
7. Bracket
8. Catalytic converter assembly
9. Gasket



### REMOVAL SERVICE POINT

#### ◀A▶ RIGHT BANK OXYGEN SENSOR (REAR)/LEFT BANK OXYGEN SENSOR (REAR)/LEFT BANK OXYGEN SENSOR (FRONT) REMOVAL

Use special tool oxygen sensor wrench (MD998770) to remove the oxygen sensor.



### INSTALLATION SERVICE POINT

#### ▶A◀ LEFT BANK OXYGEN SENSOR (FRONT)/LEFT BANK OXYGEN SENSOR (REAR)/RIGHT BANK OXYGEN SENSOR (REAR) INSTALLATION

In the same way as removal, use special tool oxygen sensor wrench (MD998770) to tighten the oxygen sensor to the specified torque.

**Tightening torque:  $44 \pm 5$  N·m**