

---

# 25 PROPELLER SHAFT

## CONTENTS

GENERAL .....	2	PROPELLER SHAFT .....	2
LUBRICANT .....	2		

## GROUP 25

# PROPELLER SHAFT

## GENERAL

### OUTLINE OF CHANGE

Due to the change of rear propeller shaft from universal joint type to BJ type, the service procedure has been established. The other items are the same as before.

## LUBRICANT

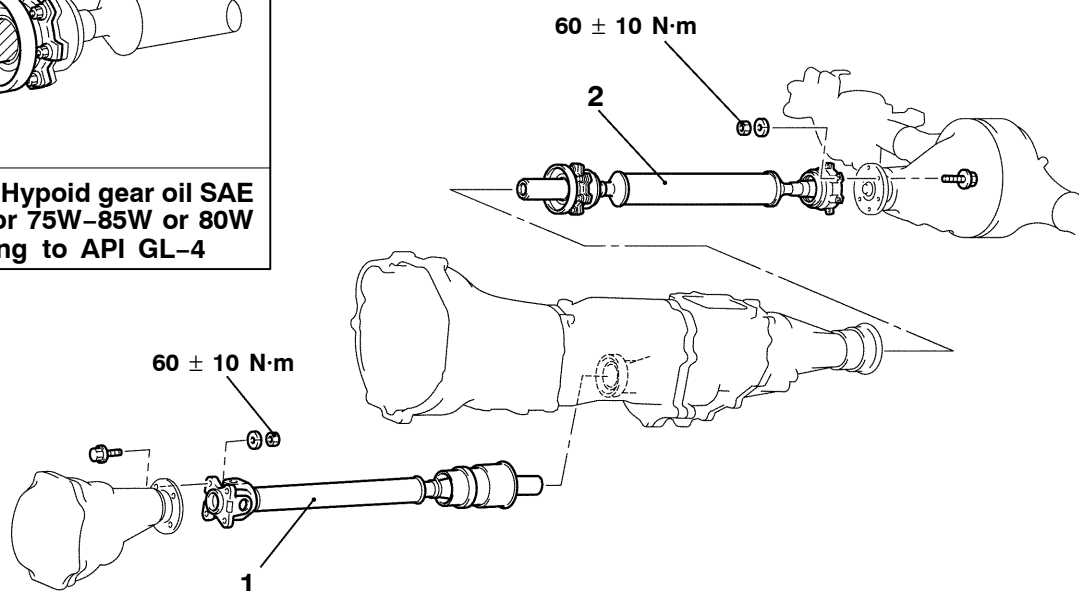
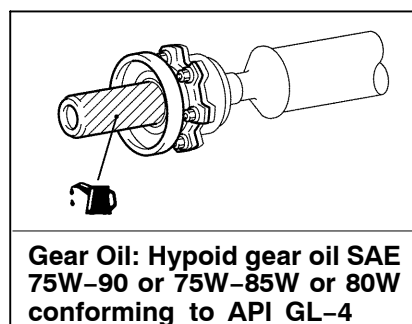
Item	Specified lubricant	Quantity
Propeller shaft sleeve yoke	Gear oil API classification GL-4 SAE 75W-85W or 75W-90	As required

## PROPELLER SHAFT

### REMOVAL AND INSTALLATION

#### Pre-removal and Post-installation Operation

Transfer Gear Oil Draining and Supplying



AC401814AB

#### Removal steps

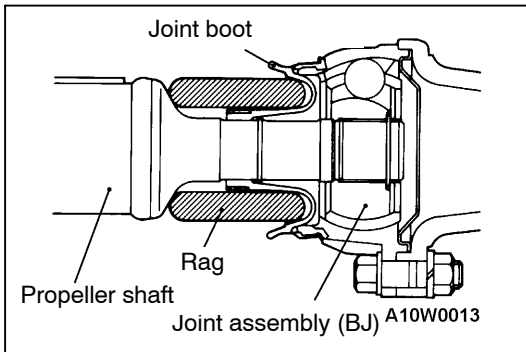


1. Front propeller shaft assembly
2. Rear propeller shaft assembly

## REMOVAL SERVICE POINT

### ◀A▶ FRONT PROPELLER SHAFT ASSEMBLY/REAR PROPELLER SHAFT ASSEMBLY REMOVAL

1. Set the transfer shift lever to “2H” range.
2. Make mating marks on the differential companion flange and flange yoke.

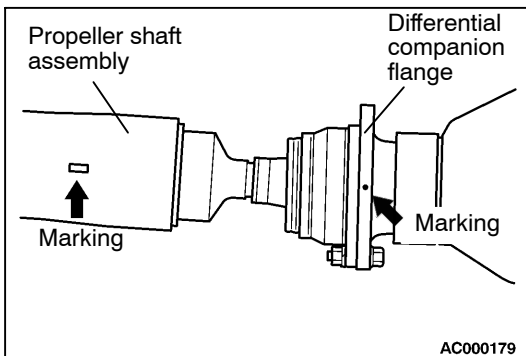


3. Wrap a rag around the joint boot, and then remove the propeller shaft assembly.

#### Caution

**When removing the propeller shaft, be careful not to damage the joint boot by pinching it.**

4. Cover the transfer to prevent the entrance of foreign material.



## INSTALLATION SERVICE POINTS

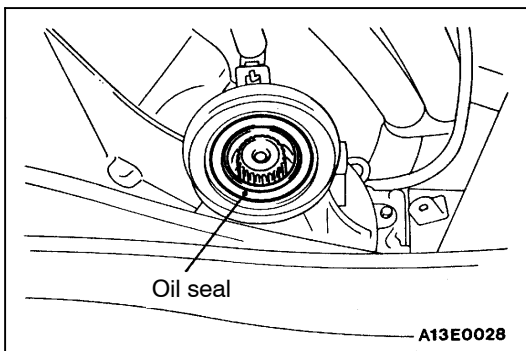
### ▶A◀ REAR PROPELLER SHAFT ASSEMBLY INSTALLATION

When reusing the propeller shaft, align the mating marks and install the propeller shaft.

When the new rear propeller shaft assembly is installed, position it so that the marking on the propeller shaft assembly is closest to that on the differential companion flange (within 30° for BJ type propeller shaft).

#### Caution

- (1) Wipe out oil and grease on the threads of the mounting bolts and nuts before tightening, or they will loosen.
- (2) Be careful not to impact or damage the propeller shaft.
- (5) Do not damage the oil seal lips of the transfer.

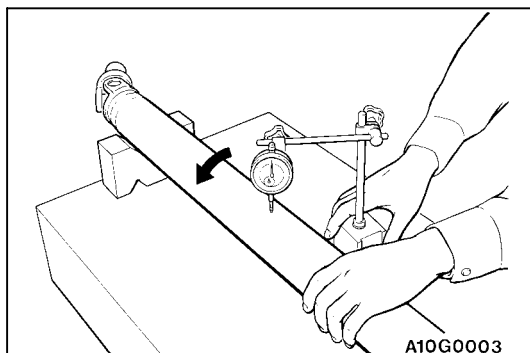


### ▶B◀ FRONT PROPELLER SHAFT ASSEMBLY INSTALLATION

When reusing the propeller shaft, align the mating marks and install the propeller shaft.

#### Caution

1. Do not damage the oil seal lips of the transfer.
2. Wipe out oil and grease on the threads of the mounting bolts and nuts before tightening, or they will loosen.

**INSPECTION****PROPELLER SHAFT RUNOUT****Limit:**

Front propeller shaft: 0.5 mm

Rear propeller shaft: 0.4 mm

**DISASSEMBLY AND REASSEMBLY****FRONT PROPELLER SHAFT**

The disassembly and reassembly service points are the same as before.

**REAR PROPELLER SHAFT****Caution**

Rear propeller shaft is BJ type propeller shaft and non-serviceable.