

## GENERAL

### OUTLINE OF CHANGES

Due to the following changes to the vehicles with 4M41 engine, service procedures have been established.

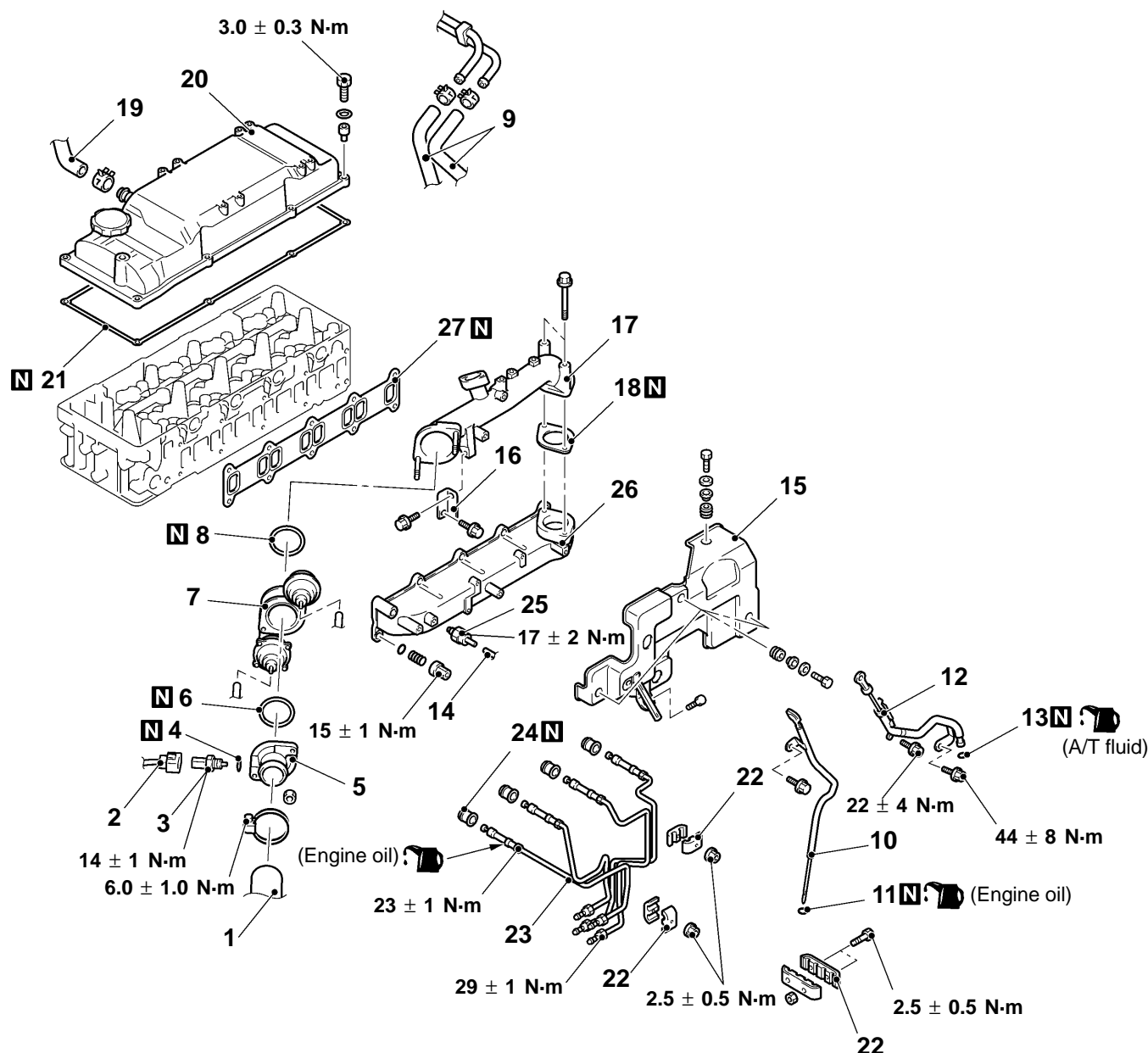
- The intake manifold has been reshaped.
- The EGR pipe has been reshaped.

## INTAKE MANIFOLD AND THROTTLE BODY <4M41>

### REMOVAL AND INSTALLATION

#### Pre-removal and Post-installation Operations

- |   |  |
|---|--|
| • Engine Cover Removal and Installation               | • EGR Valve and EGR Pipe Removal and Installation <M/T> (Refer to GROUP 17.)   |
| • Skid Plate and Under Cover Removal and Installation | • EGR Valve and EGR Pipe B Removal and Installation <A/T> (Refer to GROUP 17.) |
| • Battery, Battery Tray Removal and Installation      |  |
| • Fuel Filter Removal and Installation                |  |



AC205547AB

### Removal steps

- |   |                              |
|---|------------------------------|
| 1. Intercooler air hose connection        | 14. Vacuum hose connection   |
| 2. Boost air temperature sensor connector | 15. Intake manifold cover    |
| 3. Boost air temperature sensor           | 16. Air intake pipe stay     |
| 4. Gasket                                 | 17. Air intake pipe          |
| 5. Intake air fitting                     | 18. Air intake pipe gasket   |
| 6. O-ring                                 | 19. Breather hose connection |
| 7. Throttle body assembly                 | 20. Rocker cover             |
| 8. O-ring                                 | 21. Rocker cover gasket      |
| 9. Fuel hose connections                  | 22. Clamps                   |
| 10. Engine oil level gauge and guide      | 23. Injection pipes          |
| 11. O-ring                                | 24. Injection pipe seals     |
| 12. A/T fluid level gauge and guide       | 25. Gas filter assembly      |
| 13. O-ring                                | 26. Intake manifold          |
|   | 27. Intake manifold gasket   |

### NOTE

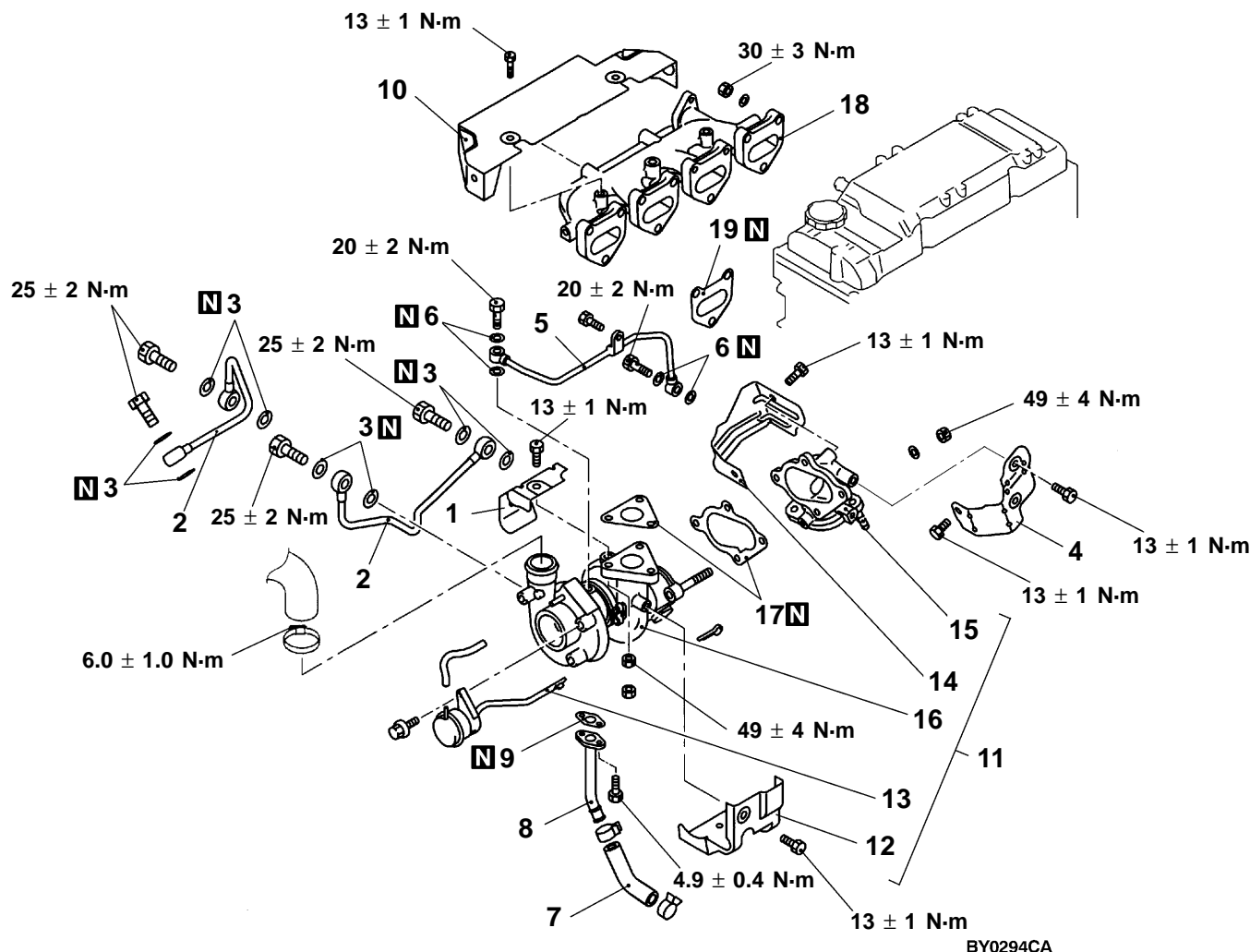
The removal and installation service points are the same as before.

# TURBOCHARGER AND EXHAUST MANIFOLD <4M41>

## REMOVAL AND INSTALLATION

### Pre-removal and Post-installation Operations

- Engine Coolant Draining and Refilling
- Skid Plate and Under Cover Removal and Installation
- Engine Cover Removal and Installation
- Air Cleaner Assembly Removal and Installation
- Battery, Battery Tray Removal and Installation
- EGR Pipe Removal and Installation <M/T> (Refer to GROUP 17.)
- EGR Pipe and EGR Box Removal and Installation <A/T> (Refer to GROUP 17.)
- Front Exhaust Pipe Removal and Installation



### Removal steps

1. Turbocharger cover
2. Water pipes
3. Gaskets
4. Turbocharger cover
5. Oil pipe
6. Gaskets
7. Oil return hose
8. Oil return pipe
9. Oil return pipe gasket
10. Heat protector
11. Turbocharger and exhaust fitting assembly
12. Turbocharger cover
13. Waste gate actuator
14. Turbocharger cover
15. Exhaust fitting
16. Turbocharger assembly
17. Turbocharger gaskets
18. Exhaust manifold
19. Exhaust manifold gaskets

### NOTE

The installation service points are the same as before.