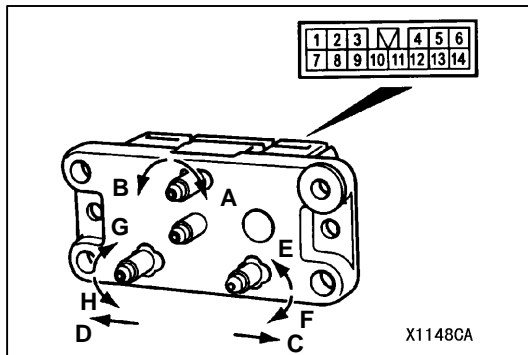


## GENERAL

### OUTLINE OF CHANGES

Service procedures have been established due to the following changes.

- Addition of the power seat for the front passengers's seat <Vehicles for Australia (some models)>
- Addition of the rear shelf trim <Short wheelbase (some models)>
- Change of the room mirror



## FRONT SEAT

### INSPECTION

POWER SEAT (PASSENGER'S SIDE) MANUAL SWITCH  
CONTINUITY CHECK <VEHICLES FOR AUSTRALIA  
(SOME MODELS)>

Switch position			Terminal No.									
			1	2	3	4	5	6	7	8	13	14
Reclining switch	Front	A			○	○					○	○
	Rear	B			○	○					○	○
Slide switch	Front	C							○	○	○	○
	Rear	D							○	○	○	○
Front height switch	Up	E					○	○			○	○
	Down	F					○	○			○	○
Rear height switch	Up	G	○	○							○	○
	Down	H	○	○							○	○

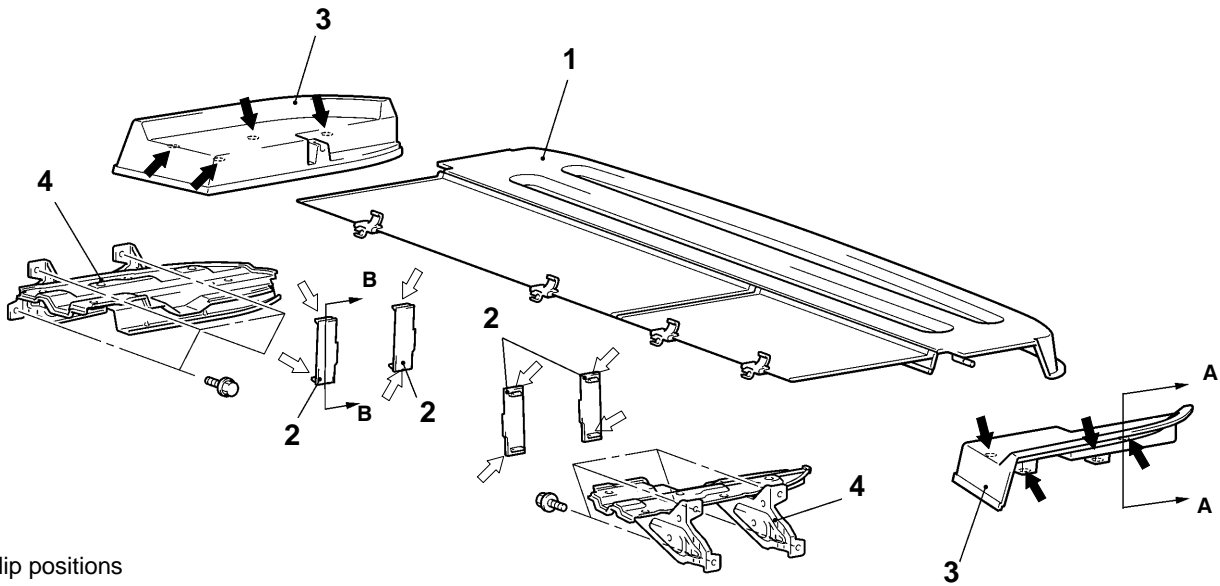
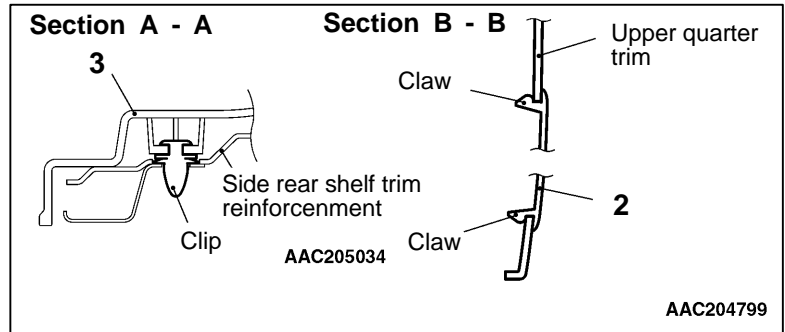
# TRIMS

## REMOVAL AND INSTALLATION

Main  
Index

Group  
Index

Group  
TOC

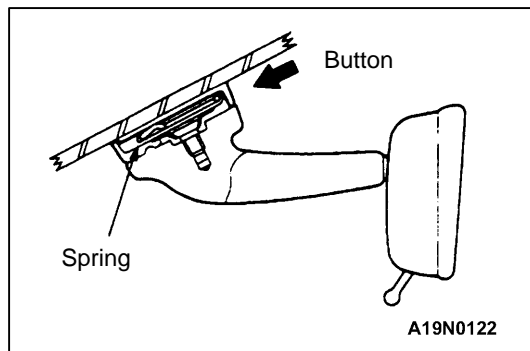


### NOTE

- (1) ➡ : Clip positions  
(2) ➡ : Claw positions

### Removal steps

1. Center rear shelf trim
2. Side rear shelf trim cap
3. Side rear shelf trim
4. Side rear shelf trim reinforcement



## ROOM MIRROR

Push from the direction shown in the illustration for removal.

### NOTE

1. The spring of the mirror is fixed into the groove of the button adhered to the glass.
2. The tolerable weight of the mirror is less than 440 N (45 kgf).