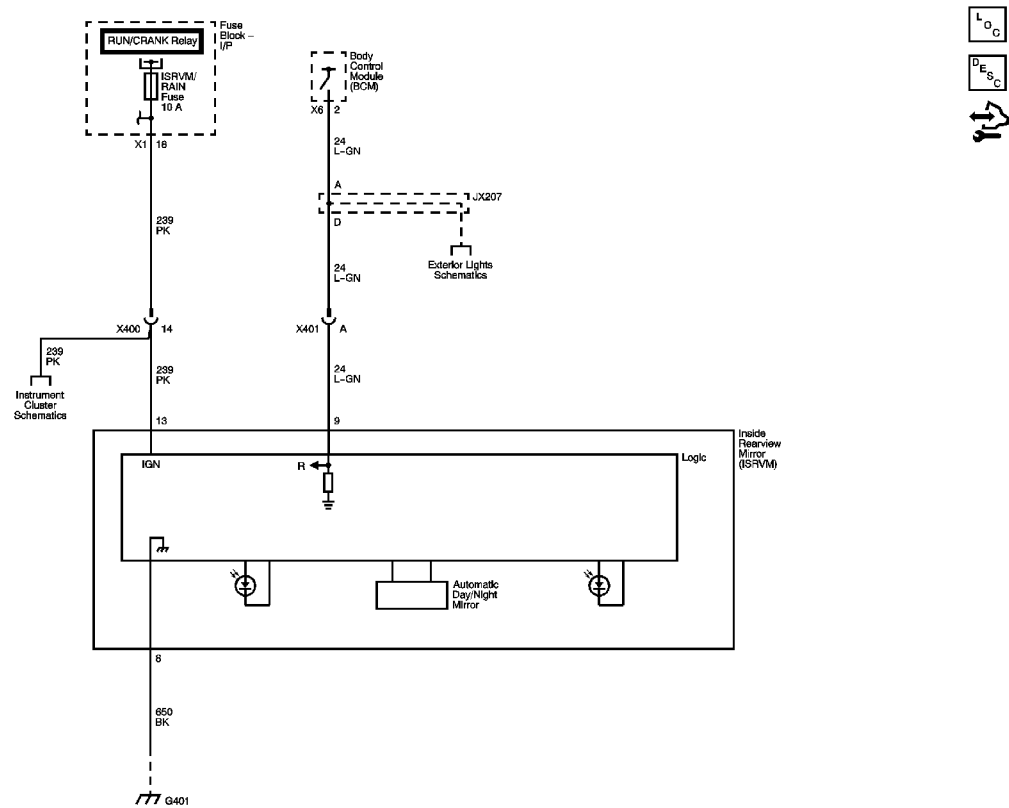
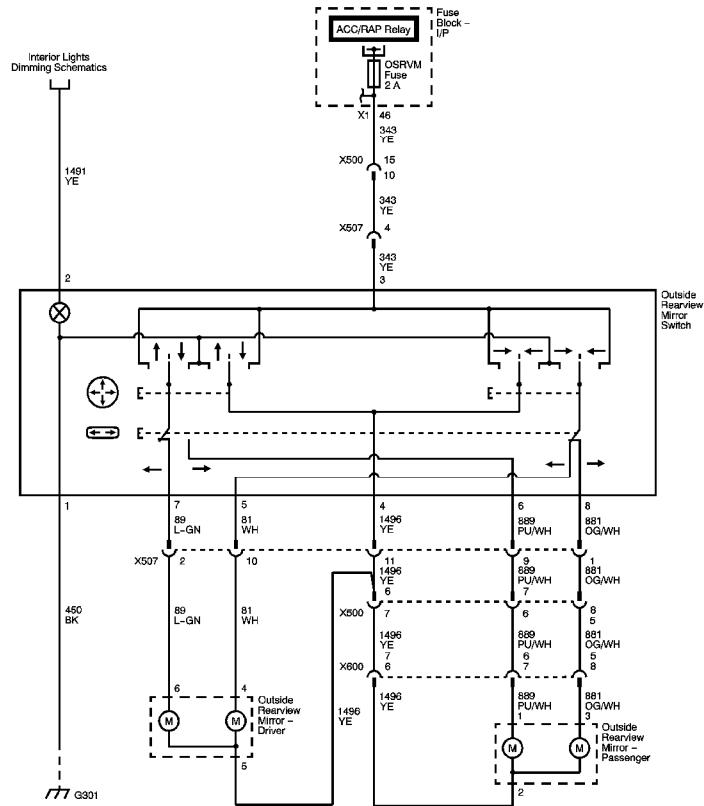


Fastener Tightening Specifications

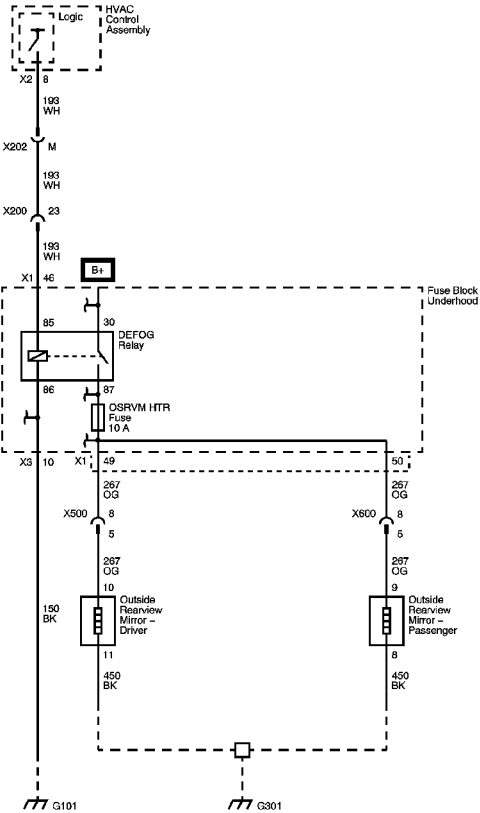
Application	Specification	
	Metric	English
	4.5 N·m	4 lb in

Inside Rearview Mirror Schematics





Outside Heated Mirror Schematics

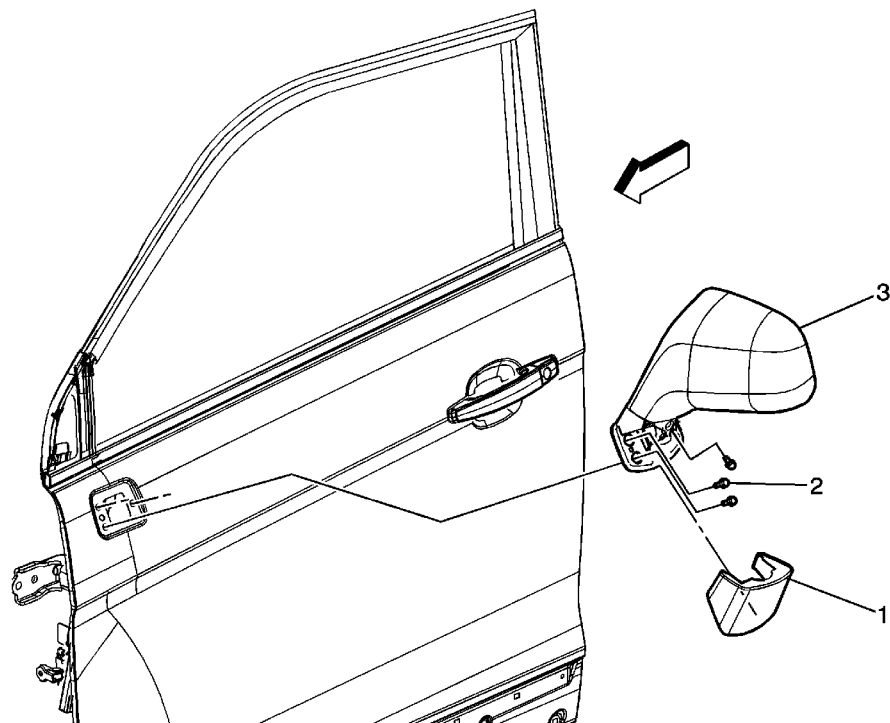


L_OC

D_ES_G



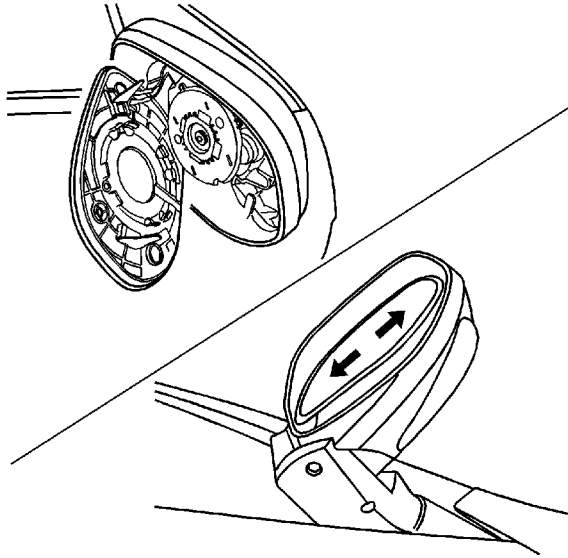
Outside Rearview Mirror Replacement



Callout	Component Name
1	Outside Rearview Mirror Cover
2	Outside Rearview Mirror Bolt (Qty: 3) Caution: Refer to Fastener Caution in the Preface section. Procedure Disconnect the electrical connector if equipped. Tighten 4.5 N·m (4 lb in).
3	Outside Rearview Mirror

Outside Rearview Mirror Glass Replacement

Removal Procedure

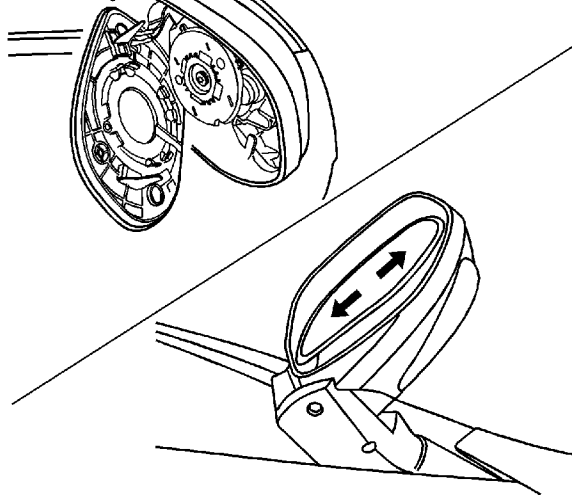


1. Adjust the mirror glass so it is in the fully upward position.

Important: The heater element is fitted to the rear of the mirror glass and is susceptible to damage during mirror glass removal. Extreme care must be taken while removing the mirror glass.

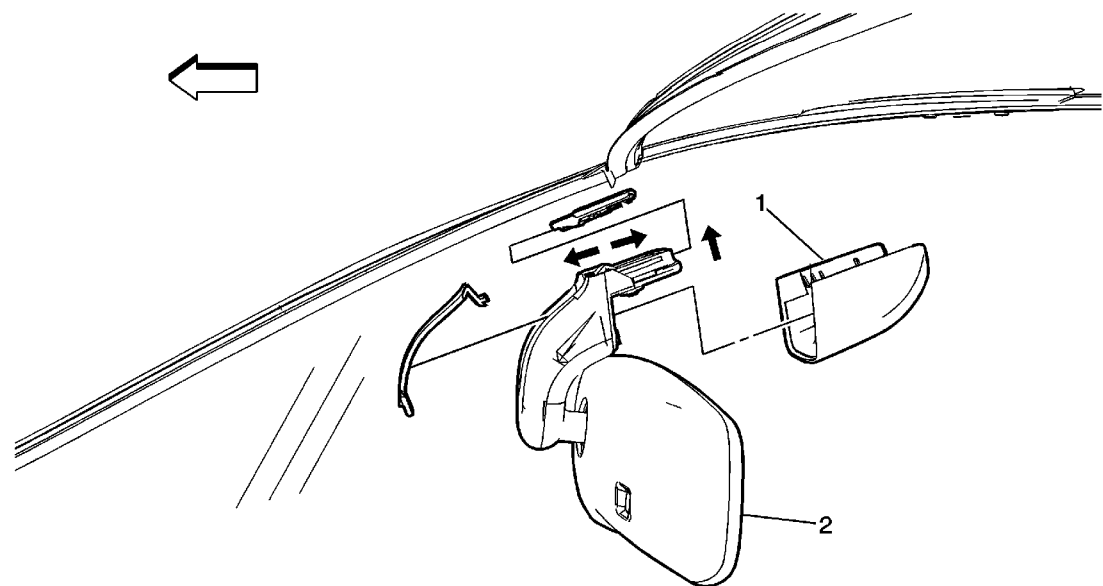
2. Release the mirror glass from the mirror motor tabs by working the lens back and fourth until it releases the tabs.
3. Gently lever the mirror glass away from the motor assembly.
4. Remove the outside rearview mirror glass.
5. Disconnect the heating mirror connector if equipped.

Installation Procedure



1. Connect the heating mirror connector to the mirror if equipped.
2. Support the mirror housing and push the mirror glass squarely onto the motor until it is lock in place.
3. Inspect the outside rearview for proper operation.

Inside Rearview Mirror Replacement



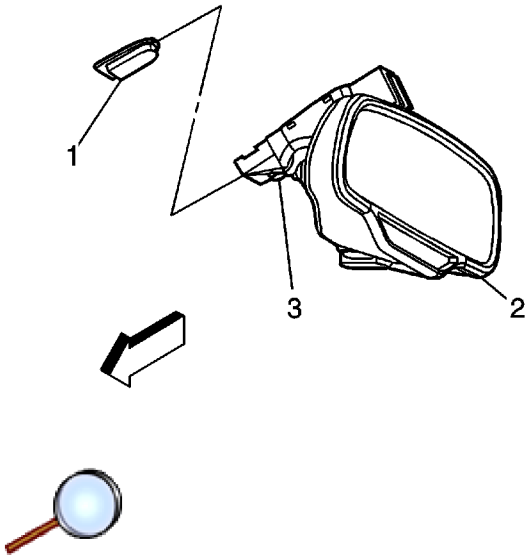
Callout	Component Name
1	Rearview Mirror Support Cover Procedure 1. Use a flat bladed tool, slide the mirror retaining cover (1) off the mirror. 2. The mirror retaining cover (1) clip on and off.
2	Rearview Mirror Procedure With both hands on the mirror, rock it from side to side while sliding downward, this will assist in the releasing of the mirror from the mounting tab.

Rearview Mirror Support Installation

The rearview mirror is attached to a support which is bonded to the windshield glass. This support is installed by the glass supplier using an autoclaving process.

Service replacement windshield glass has the mirror support bonded to the glass assembly. To install a detached mirror support the following items are needed:

- P/N 11067-2, LOCTITE® Rearview Mirror Adhesive, or equivalent
- Original mirror support
- Wax marking pencil or crayon
- Rubbing alcohol
- Clean paper towel
- Fine grade emery cloth or sandpaper (No. 320 or No. 360)
- Clean toothpick



1. Center the support within the black-out area.
2. On the inside glass surface, clean the mirror support black-out area with paper towel and a domestic scouring cleanser, glass cleaning solution, or polishing compound. Rub until the area is completely clean and dry. When dry, clean the area with an alcohol saturated paper towel to remove any traces of scouring powder or cleaning solution from these area.
3. Separate the mirror (2) from the support (1) . With a piece of fine grade emery cloth (No. 320 or No. 360) or sandpaper, sand the bonding surface of the rearview mirror support. All traces of factory installed adhesive must be removed prior to installation.
4. Wipe the sanded mirror support with clean paper towel saturated with alcohol and allow to dry.
5. Follow directions on the manufacturer's kit to prepare the rearview mirror support prior to installation on the glass.

After 5 minutes, any excess adhesive may be removed with an alcohol moistened paper towel or glass cleaning solution.

7. Install the mirror and connect the electrical connection, if equipped.